

# AFTERMARKET COLLISION PARTS



## A BUMPERS

P/N CK022015  
12" Chrome Bumper w/Center Step & Tow Holes, Fits 1992-2004

P/N CK020015  
12" Chrome Bumper w/Center Step, Fits 1992-2004, Pictured Below



## B HEADLIGHTS & TURN SIGNALS

P/N 03-1606037  
Headlight Bezel, Fits 1992-2004, Replaces OE 06-20017-000, Pictured Below



P/N 09-160016005  
Fender Turn Signal, Fits 1992-2004, Pictured Below



P/N 29-160674  
Single Square Headlight w/Retaining Ring & Back, Replaces OE 1686721C91, Fits 1984-2002, Pictured Below



## C GRILLES

P/N 03-1210301  
Aftermarket Aluminum Grille, Replaces OE A17-12935-000, A17-12935-001, A17-12935-002, A17-12935-003, A17-14766-000, A17-14768-000, Fits 1992-2004, Pictured Below



P/N 03-1210321  
Aftermarket Gray Painted Grille, Replaces OE A17-12935-000, A17-12935-001, A17-12935-002, A17-12935-003, A17-14766-000, A17-14768-000, Fits 1992-2004, Pictured Below



## D ENGINE COOLING PARTS AC CONDENSERS

P/N 03-070010  
AC Condenser, Replaces OE 680-801-00-70, 680-830-00-70, 680-830-03-70, N83306280, Fits 1994-2004, Pictured Below



## CHARGE AIR COOLERS

P/N 29-070113  
Charge Air Cooler, 25"H x 27.25"W x 1.625" Core Thickness, 3.5" Inlet, 3.5" Outlet, Fits 1996-2005

P/N 29-070104  
Charge Air Cooler, 27.25"H x 25"W x 1.625" Core Thickness, 3.5" Inlet, 3.5" Outlet, Fits 1997-2005

P/N 03-070120  
Charge Air Cooler, 25.25"H x 30.75"W x 1.625" Core Thickness, 4" Inlet, 4" Outlet, Fits 1997-2005, Pictured Below



## RADIATORS

P/N 29-070214  
Radiator w/o Oil Cooler, 28.75"H x 25"W x 1.5" Core Thickness, 2" Inlet Upper Left At 5"; 2.25" Outlet At 7.25"; 2 Row, No Frame, Fits 1991-2005

P/N 29-070242  
Radiator w/Oil Cooler, 28.625"H x 25"W x 1.875" Core Thickness, 2" Inlet Upper Left At 5"; 2" Outlet Lower Right At 7.25"; No Frame, Fits 1991-2005, Pictured Below



P/N 03-070246  
Radiator w/Oil Cooler, 34.625"H x 24.5"W x 1.875" Core Thickness, 2" Inlet Upper Left, 2" Outlet Lower Right, 2 Row, No Frame, Replaces OE 05-10238-000, 05-16009-000, 05-16419-000, 05-16756-000, Fits 1991-2005

## AC DRIERS & RELATED

P/N 03-070016  
3" x 10.25" AC Drier, Replaces OE ABP N83 319614, ABP N83 319615, PH088335-00, Fits 1996-2002, Pictured Below



P/N 29-070047  
AC Expansion Valve, Replaces OE A2245432000, BOA80332100129, Fits 1994-2002, Pictured Below



## E HOODS & RELATED

P/N 03-12510  
Aftermarket Fiberglass Hood Shell, Replaces OE A17-14024-004, A17-14774-000, A17-14774-004, A17-15053-000, 680-880-1957, 680-880-2057, Fits 1992-2004, Pictured Below



\*\*\* High Quality Aftermarket Replacement Part (Not OEM Parts).

All items represented are aftermarket replacement parts. If you require OEM parts, please contact your nearest authorized Freightliner dealer. Four State Trucks is not affiliated with Freightliner.

Fits FREIGHTLINER FL70 SBA

www.BestFitTruckParts.com  
855-220-8608

# AFTERMARKET COLLISION PARTS



## **E HOODS & RELATED** (cont.)

P/N 03-12554  
 Aftermarket Fiberglass Hood Shell, 46.5"L,  
 Replaces OE A17-14774-004, A17-14024-004,  
 A17-15053-000, 680-880-1957, 680-880-2057,  
 06-20017-000, Fits 1996-2004,  
 Pictured Below



P/N 03-12584  
 Aftermarket Fiberglass Hood Shell For  
 School Bus, 45"L, Turn Signal Mounting  
 Location & Hinges Different Than Truck,  
 Replaces OE A17-12792-005, A17-14024-009,  
 A17-14771-011, A17-14774-009, A17-15053-004,  
 Fits 1996-2005, Pictured Below



P/N 03-12561  
 Aftermarket Fiberglass Hood Shell For 106  
 BBC Set Back Axle Models, 46.5" Center  
 Line, Double Wall Construction On Lower  
 Grille Area, Panels & Inner Structure  
 Available Separately, Lower Front Valence  
 Is 3" Higher, Insulation Stays, Wire Harness  
 Mounts, Rear Snubber Supports, Front  
 Hinges & Headlight Bearings Included,  
 Replaces OE A17-12407-000, A17-12646,  
 A17-14026-000, A17-14776-000, A17-14776-001,  
 Fits 1996-2005, Pictured Below



P/N 03-124018  
 Hood Latch Hook, Replaces OE  
 17-14781-000, 17QM263A, Fits 1992-2004,  
 Pictured Below



P/N 03-124027  
 Hood Spring, Replaces OE 17-12609-000,  
 Fits 1992-2004, Pictured Below



P/N 09-123003  
 8" Convex Tripod Fender Mirror,  
 Fits 1992-2004

P/N 09-123004  
 Single Arm Fender Mirror, Fits 1992-2004

## **F FENDER EXTENSIONS**

P/N 03-0512002 (Left)  
 P/N 03-0512102 (Right)  
 Fender Extension, Replaces OE  
 A 680 881 00 01, A 680 881 01 01,  
 Fits 1992-2004, Pictured Below



## **G WHEELS & ACCESSORIES**

P/N 09-20132231 (22.5")  
 P/N 09-20132431 (24.5")  
 Accuride Aluminum Wheel, Steer/Drive,  
 Pictured Below



P/N 09-2015221 (22.5")  
 P/N 09-2015241 (24.5")  
 White Steel Wheel, 10 Hole Hub,  
 Steer/Drive, Pictured Below



## **H CAB & RELATED MIRRORS & RELATED**

P/N 09-0915011  
 Mirror Head, Fits 1992-2004

P/N 09-0915007  
 Heated Mirror Head, Fits 1992-2004,  
 Pictured Below



P/N 09-0915008  
 Heated/Lighted Mirror Head,  
 Fits 1992-2004

P/N 09-0915006  
 Heated/Motorized Mirror Head,  
 Fits 1992-2004

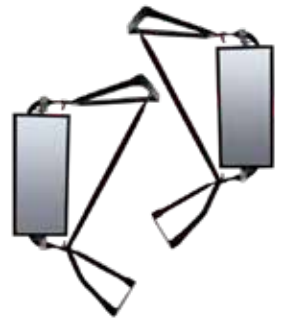
P/N 09-0915005  
 7.5" Spot Mirror, Offset Stud,  
 Fits 1992-2004

P/N 09-0915003  
 8" Spot Mirror, Center Stud,  
 Fits 1992-2004

P/N 09-0915004  
 8" Spot Mirror, Offset Stud, Fits 1992-2004

P/N 09-0915010  
 8.5" Spot Mirror, Offset Stud,  
 Fits 1992-2004

P/N 03-091553  
 Black Mirror Set, Fits 1992-2004,  
 Pictured Below



## **DOOR ACCESSORIES**

P/N 03-0914057 (Left)  
 P/N 03-0914058 (Right)  
 Exterior Door Handles, Replaces OE  
 680-760-00-70, 680-760-01-70,  
 Fits 1992-2004, Pictured Below



\*\*\* High Quality Aftermarket Replacement Part (Not OEM Parts).

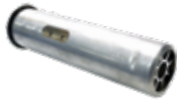
All items represented are aftermarket replacement parts. If you require OEM parts, please contact your nearest authorized Freightliner dealer. Four State Trucks is not affiliated with Freightliner.

# AFTERMARKET COLLISION PARTS



## I FUEL TANKS & RELATED FUEL TANK ACCESSORIES

P/N 09-060304  
Anti-Siphon Tube, Fits 2002-2010,  
Pictured Below



P/N 29-060313  
Adjustable Fuel Gauge Sender, Fits 5" to 27"  
DIA. Tanks, 240 to 33 OHM,  
Fits 1996-2004, Pictured Below



## FUEL TANK CAPS

P/N 03-060313  
Non-Locking Fuel Tank Cap, Fits 1992-2004,  
Pictured Below



P/N 03-060314  
Locking Fuel Tank Cap, Fits 1992-2004,  
Pictured Below



## FUEL TANK STRAPS

P/N 03-060109  
Stainless Steel Fuel Tank Strap w/o Step  
Bracket, Fits 1992-2004, Pictured Below



P/N 03-060108  
Black Fuel Tank Strap w/o Step Bracket,  
Fits 1992-2004

P/N 09-060101  
2" Rubber Fuel Tank Strap Liner w/Lip,  
Fits 1992-2004, Sold By The Foot

## FUEL TANKS

P/N 03-06005503 (Left)  
P/N 03-06005504 (Right)  
55 Gallon, 18" x 18.5" x 38" Aluminum  
Rectangular Rear Fill Fuel Tank,  
Fits 1992-2004, Pictured Below



P/N 03-06009001 (Left)  
P/N 03-06009002 (Right)  
55 Gallon, 18" x 18.5" x 64" Aluminum  
Rectangular Rear Fill Fuel Tank,  
Fits 1992-2004, Pictured Below



## J FENDERS & RELATED

P/N 09-11050601  
Plastic Low Mount Quarter Fenders,  
Fits 1992-2004, Sold As A Pair

P/N 09-11030601  
Stainless Steel Low Mount Quarter  
Fenders, Replaces OE A22-58858-000,  
22-58857-000, A22-58858-001,  
22-58857-001, Fits 1992-2004, Sold As A Pair

## K FRAME & CHASSIS

P/N 03-051000  
Air Bag Airliner II, Replaces OE 16-16730-000,  
16-13810-000, 16-13810-002, 16-1413688-002,  
A16-13688-002, Fits 1992-2004, Pictured Below



P/N 65407  
Rear Shock w/FAS 2 Air Suspension,  
Replaces OE 16-13947-000, 681-326-04-00,  
Fits 1992-2004, Pictured Below



P/N 65408  
Rear Shock w/FAS 2 Air Suspension,  
Replaces OE 16-13947-000, 681-326-04-00,  
Fits 1992-2004, Pictured Below



P/N 09-0507042  
30" Black Steel Heavy Duty Spring Loaded  
Mud Flap Hanger, 2.5" Mounting Bolt  
Center, Open End Cap, Sold As Pair, Fits  
1992-2004, Pictured Below



P/N 09-0507039  
30" Black Steel Heavy Duty Angled Spring  
Loaded Mud Flap Hanger, 45 Degree  
Angle, 1.125" Mounting Bolt Center, Closed  
End Cap, Sold As Pair, Fits 1992-2004,  
Pictured Below



## OE MUD FLAPS

P/N 03-050701OE  
6" x 24" Logo Mud Flap, Replaces OE  
PDT1023, OEM Part Not An Aftermarket  
Part, Fits 1992-2004, Pictured Below



P/N 03-050704OE  
24" x 30" Logo Mud Flap,  
Replaces OE PDT1513, OEM Part Not An  
Aftermarket Part, Fits 1992-2004,  
Pictured Below



## L WHEELS & ACCESSORIES

P/N 09-20132231 (22.5")  
P/N 09-20132431 (24.5")  
Accuride Aluminum Wheel, Steer/Drive



\*\*\* High Quality Aftermarket Replacement Part (Not OEM Parts).

All items represented are aftermarket replacement parts. If you require OEM parts, please contact your nearest authorized Freightliner dealer. Four State Trucks is not affiliated with Freightliner.

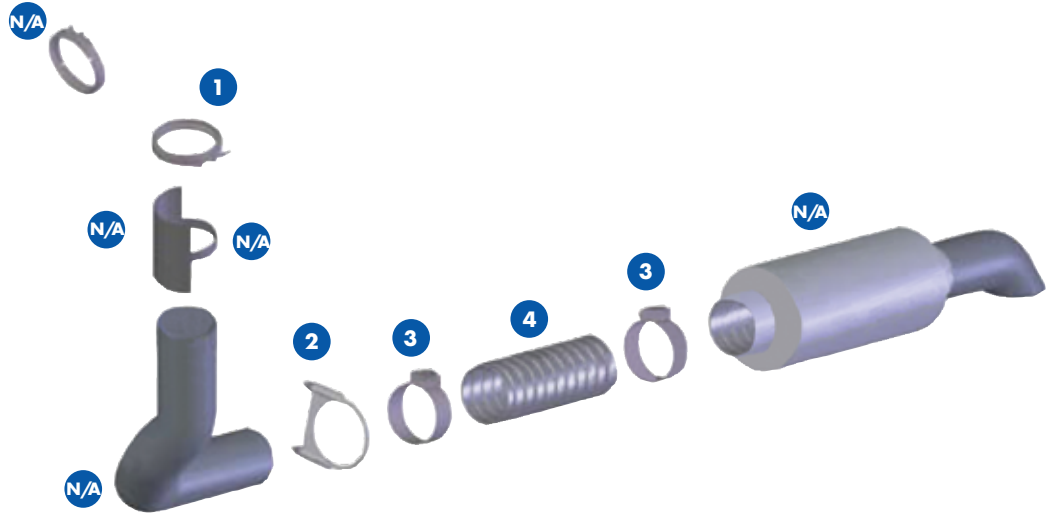
Fits FREIGHTLINER FL70 SBA

www.BestFitTruckParts.com  
855-220-8608

# AFTERMARKET COLLISION PARTS

## EXHAUST PARTS FOR FREIGHTLINER FL70 SBA, CUMMINS ISC, 1996-2004

- N/A** EXHAUST V Band Clamp  
*Replaces OE 681-492-06-04, Fits 1993-2003*
- 1** P/N 29-080004  
Exhaust V Band Clamp, *Replaces OE 681-492-00-04, Fits 1993-2003*
- N/A** 4" EXHAUST SHIELD AT TURBO PIPE  
*Replaces OE 04-16566-001, Fits 1993-2003*
- N/A** 4" EXHAUST SHIELD AT TURBO PIPE,  
*Replaces OE 23-09132-064, Fits 1993-2003*
- N/A** EXHAUST DOWN PIPE,  
*Replaces OE 04-18817-000*
- 2** P/N 09-0805006  
4" Exhaust Clamp U Bolt, *Replaces OE A04-09520-000, Fits 1993-2003*
- 3** P/N 09-0800050  
4" Stainless Steel Band Clamp,  
*Replaces OE 2015639C1, Fits 1993-2003*
- 4** P/N 09-080441K24  
4" Stainless Steel Flex Pipe,  
*Fits 1993-2003, Sold By The Foot*
- N/A** 4" I.D. x 4" DIA. MUFFLER,  
*Replaces OE 04-18814-003, Fits 1993-2003*



\*\*\* High Quality Aftermarket Replacement Part (Not OEM Parts).  
 All items represented are aftermarket replacement parts. If you require OEM parts, please contact your nearest authorized Freightliner dealer. Four State Trucks is not affiliated with Freightliner.