

AFTERMARKET COLLISION PARTS



A BUMPERS

P/N HC001001

12" Chrome Bumper w/Tow Holes, Standard Rolled End, Replaces OE 15-06484F20000, Fits 1987-2007

P/N HC001002

16" Chrome Bumper w/Tow Holes, Standard, Replaces OE 15-06485F2000, Fits 1987-2006 378 Conventional

P/N HC000002

16" Chrome Bumper w/Bolt Holes, Standard Rolled End, Replaces OE 15-06485F1000, Fits 1987-2007

P/N HC201002

16" Chrome Bumper w/Tow & Square Fog Light Holes, Replaces OE 15-06485F2100, Fits 1987-2006 379 Conventional

P/N HC200002

16" Chrome Bumper w/Mounting Holes & 2 Square Fog Light Holes, Replaces OE 15-06485F1000, Fits 1987-2007

P/N HC001006

18" Chrome Texas Square Rolled End Bumper w/Tow Holes, Replaces OE N71-6011-X1211, Fits 1987-2006 379 Conventional, Pictured Below



P/N HC000006

18" Chrome Bumper, Standard Rolled End, Replaces OE N71-6011-X1111, Fits 1987-2007

P/N HC0010060

18" Economy Chrome Texas Square Rolled End Bumper w/Tow Holes, Replaces OE N71-6011-X1211, Fits 1987-2007

P/N HC201006

18" Chrome Texas Square Rolled End Bumper w/Tow & Square Fog Light Holes, Fits 1987-2006 379 Conventional

P/N 01-0114003

Black Powder-Coated Bumper Support Brackets For 16", 18" & 20" Bumpers, Fasteners Not Included, Sold As Pair, Fits 1987-2007



P/N 01-0114004

Black Powder-Coated Bumper Support Brackets For 20" & 22" Bumpers, Fasteners Not Included, Sold As Pair, Fits 1987-2007



B HEADLIGHTS & TURN SIGNALS

P/N 01-1606079 (Left)

P/N 01-1606080 (Right)

Aftermarket Projection Headlight Assembly w/Mounting Arm, LED Dual Function, Long Wiring Loom For Electrical Hookup, 70 Watts, 6.35 Amps @ 12Vdc, 12V-24V Dc, Fits 1987-2007, Pictured Below



P/N 09-1606000 (Left)

P/N 09-1606002 (Right)

Aftermarket Dual Square Headlight w/Bezel, Does Not Include Aluminum Housing, Fits 1990-2007, Pictured Below



P/N 09-1606163 (Left)

P/N 09-1606164 (Right)

Stainless Dual Round Headlight w/Halogen Headlamp, Fits 1987-2007, Pictured Below



P/N 29-160669

4" x 6" Rectangle Halogen Low Bean H4656 Headlight, Replaces OE K307-30, 16-07538, Fits 1987-2007, Pictured Below



P/N 29-1606017

7.5" x 5" Single Square Headlight Assembly, Does Not Include Aluminum Housing, Fits 1987-2007, Pictured Below



P/N 09-1606077

Aftermarket Dual Square Chrome Headlight Bezel, Replaces OE K307-30, 16-07538, Fits 1987-2007, Pictured Below



P/N 09-1606001

Chrome Coated Plastic Dual Headlight Bezel, Fits 1987-2007

P/N 29-160603

Chrome Dual Headlight Bezel w/Visor, Fits 1987-2007, Pictured Below



P/N 09-1606080

Chrome Single Square Headlight Bezel, Fits 1987-2007, Pictured Below



P/N 09-1606207

5" x 7" Headlight Inner Lamp Bucket, Fits 1987-2007, Pictured Below



P/N 01-1606047

Headlight Wiring Harness For Dual Square Headlights, Side Marker Plug, 1 Harness Per Headlight Assembly, Replaces OE 1-80071, Fits 1987-2007, Pictured Below



P/N 01-0107005

Black Fog Light Guard w/Chrome Screen, Fits 1987-2007, Pictured Below



C ENGINE COOLING PARTS AC CONDENSERS

P/N 01-070003

AC Condenser, 29.5"H x 9.75"W x 1" Thickness, Replaces OE 18-03093, 18-03554, Fits 1987-1994, Pictured Below



P/N 01-070000

AC Condenser, 26.625"H x 28"W x .75" Thickness, Replaces OE 18-03809, 18-04015, 18-04016, 18-04454, 1A04015, 1E5523, 3S001268, F31-10311332, F31-6062, F31-6097, PB40150, Fits 1993-2007, Pictured Below



All items represented are aftermarket replacement parts. If you require OEM parts, please contact your nearest authorized Peterbilt dealer. Four State Trucks is not affiliated with Paccar or Peterbilt.

AFTERMARKET COLLISION PARTS



C ENGINE COOLING PARTS (cont.) **AC CONDENSERS**

P/N 01-070005

AC Condenser, 29.75"H x 8"W x 1" Thickness, Replaces OE 18-03543, Fits 1987-1995, Pictured Below



P/N 01-070015

AC Condenser, 32.75"H x 8.5"W x 1.25" Thickness, Replaces OE 18-03543, Fits 1987-1995, Pictured Below



P/N 01-070006

AC Condenser, 31.5"H x 25"W x .625" Thickness, Replaces OE 1E5611, F316042, F316043, Fits 2003-2007, Pictured Below



P/N 01-070008

AC Condenser, 30"H x 23.75"W x .75" Thickness, Replaces OE 11E5715, F316064, Fits 2005-2008, Pictured Below



CHARGE AIR COOLERS

P/N 01-070102

Charge Air Cooler, 25"H x 27.25"W x 2.625" Thickness, 4.5" Inlet, 4.5" Outlet, Replaces OE 0514968, 0515020M, 0516673, 0516673L, 0516673R, 0516674, 0516676L, 0516904, 0516904B, 0516904C, 0517631, 1E3012, 1E3012G, 1E3018, 1E3216, 1E3267, 1E3267G, 1E-3267G, 1E3293, 1E3390, 1E3447, 1E3484, 1E4836, Fits 1987-1994, Pictured Below



P/N 01-070109

Charge Air Cooler, 25"H x 27.25"W x 2.625" Thickness, Bar & Plate Design, 4.5" Inlet, 4.5" Outlet, Replaces OE 0514968, 0515020M, 0516674, 0516676L, 0516904, 0516904B, 0516904C, 0517631, 1E3012, 1E3012G, 1E3018, 1E3216, 1E3267, 1E3267G, 1E-3267G, 1E3293, 1E3390, 1E3484, 1E4836, Fits 1987-1994, Pictured Below



P/N 01-070103

Super Duty Charge Air Cooler, 33.661"H x 30.669"W x 2" Thickness, Bar & Plate Design, 4" Inlet, 4" Outlet, Replaces OE 05-18730, 05-18731, 05-18751, 0706657A, 1E3316, 1E3816, 1E5635, 3E7747, F31-6001, F31-6011, F31-6049, Fits 1995-2007, Pictured Below



P/N 01-070100001

4" Stainless Right Side Charge Air Cooler Pipe, Replaces OE 05-18771, Fits 1993-2007



P/N 29-070100

Charge Air Cooler Hose & Clamp, Includes (2) 4" Hoses & (4) Stainless Clamps, Fits 1987-2007



METAL RADIATORS

P/N 01-070211

High Performance Copper Brass Radiator w/ Surge Tank, 5 Row, 36.25"H x 34.375"W x 3.125" Thickness, 2.5" Inlet Upper Left, 3" Outlet Lower Right, Replaces OE 07-05678A011, 07-05678A042, 07-05716A014, 07-06657A001, 07-06657A007, 07-06657A013, 07-06657A017, 07-06657A037, 07-06657A040, 1A16770, 1E8013, Fits 1994-2007, Pictured Below



P/N 01-070246

Copper Brass Radiator w/o Surge Tank, 3 Row, 36.25"H x 34.625"W x 2" Thickness, 2.5" Inlet Upper Left @ 10", 3" Outlet Lower Right @ 9.5", Replaces OE 0706657A015, 0706657A017, 0706657A037, 0706657A038, 0706657A041, 0706657A050, 0706657A053, 0706657A057, 0706657A074, 1A17043, 1A17047 1A18283, 1A19577, 1A19618, 1A19628, Fits 2003-2007 Pictured Below



*** High Quality Aftermarket Replacement Part (Not OEM Parts).

All items represented are aftermarket replacement parts. If you require OEM parts, please contact your nearest authorized Peterbilt dealer. Four State Trucks is not affiliated with Paccar or Peterbilt.

AFTERMARKET COLLISION PARTS



C ENGINE COOLING PARTS (cont.) **METAL RADIATORS**

P/N 01-070212

High Performance Copper Brass Radiator, 4 Row, 36"H x 34.625"W x 2.062" Thickness, 2.5" Inlet Upper Left @ 10", 3" Outlet Lower Right @ 9.5", Replaces OE 0706657A015, 0706657A017, 0706657A038, 0706657A041, 0706657A050, 0706657A057, 1A17043, 1A17047, 1A18283, 1A19577, 1A19618, 1A19628, Fits 2004-2007, Pictured Below



P/N 01-070223

Copper Brass Radiator w/ Surge Tank, 4 Row, 36.25"H x 34.625"W x 2.5" Thickness, 2.5" Inlet Upper Left, 3" Outlet Lower Right, Replaces OE 0705678A001, 0705678A008, 0705716A010, 0706657A014, 0706657A032, 0706657A038, 0706657A040, Fits 1988-1994, Pictured Below



P/N 01-070208

Copper Brass Radiator, 4 Row, 36.25"H x 34.625"W x 2.5" Thickness, 2.5" Inlet Upper Left, 2.5" Outlet Lower Right, Replaces OE 07-06657A015, 07-06657A017, 07-06657A038, 07-06657A041, 07-06657A050, 07-06657A053, 07-06657A057, 07-06657A074, 1A17043, 1A17047, 1A18283, 1A19577, 1A19618, 1A19628, Fits 2003-2007, Pictured Below



P/N 01-070200001

Copper Brass Radiator, 4 Row, 36.25"H x 34.625"W x 2.5" Thickness, 2.5" Inlet Upper Left @ 10", 3" Outlet Lower Right @ 9.5", Replaces OE 0706657A015, 0706657A017, 0706657A038, 0706657A041, 0706657A050, 0706657A053, 0706657A057, 0706657A074, 1A17043, 1A17047, 1A18283, 1A19577, 1A19618, 1A19628, Fits 2003-2007

P/N 01-070205

Copper Brass Radiator w/ Surge Tank, 4 Row, 36.25"H x 34.375"W x 2.5" Thickness, 2.5" Inlet Upper Left, 3" Outlet Lower Right, Replaces OE 07-05678A011, 07-05678A042, 07-05716A014, 07-06657A001, 07-06657A007, 07-06657A013, 07-06657A017, 07-06657A037, 07-06657A040, 1A16770, 1E8013, Fits 1994-2004, Pictured Below



P/N 01-070245

Copper Brass Radiator w/ Surge Tank, 3 Row, 36.25"H x 34.375"W x 1.75" Thickness, 2.5" Inlet, 3" Outlet, Replaces OE 07-05678A011, 07-05678A042, 07-05716A014, 07-06657A001, 07-06657A007, 07-06657A013, 07-06657A017, 07-06657A037, 07-06657A040, 1A16770, 1E8013, Fits 1995-2004

EGR COOLERS & RELATED

P/N 29-0711001

EGR Valve For Cummins ISX 15L Engines, Replaces OE 3104874, 2682805, 3682954, 3682974, 3683305, 3683446, 3684004, 4955422, 4955422NX, 4955422RX, Fits 2003-2007, Pictured Below



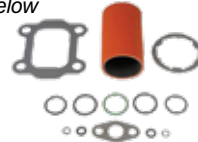
P/N 29-0711002

Heavy Duty EGR Cooler Gasket For Cummins ISX Gen II 15L Engines, Replaces OE 2881474, 2881474NX, 2881784, 2881784NX, 3684448, 4309248, 4309248NX, 4309398, 4955467, 4955926, Fits 2007-2007, Pictured Below



P/N 29-0711009

Heavy Duty EGR Cooler Gasket For Cummins ISX Gen II 15L Engines, Replaces OE 4309434NX, Fits 2003-2007, Pictured Below



RADIATOR ACCESSORIES

P/N 29-070207

Red Poly Radiator Mount Bushing, Contains (2) Bushing Halves & (1) Sleeve, Services 1 Position, 2 Needed Per Truck, Replaces OE 07-03286, Fits 1987-2007, Pictured Below



P/N 01-070244

Poly Radiator Mount, Replaces OE 07-02552, R307508, 656215, Fits 1987-2007, Pictured Below



P/N 01-070249

Remote Mount Radiator Surge Tank, 8.25" x 14.5", Corrosion Resistant Brass Fill Neck, Mounts To Passenger Side Of Firewall, Replaces OE F86-6008, Fits 2004-2007, Pictured Below



*** High Quality Aftermarket Replacement Part (Not OEM Parts).

All items represented are aftermarket replacement parts. If you require OEM parts, please contact your nearest authorized Peterbilt dealer. Four State Trucks is not affiliated with Paccar or Peterbilt.

PETERBILT 379

www.BestFitTruckParts.com
855-220-8608

AFTERMARKET COLLISION PARTS

Fits **PETERBILT 379**



C ENGINE COOLING PARTS (cont.) COOLANT RESERVOIR & RELATED

P/N 29-070203

Plastic Coolant Reservoir w/Cap & Level Sensor For Cummins Or CAT Engines w/Behr Cooling Module, *Replaces OE N5346001, 575.1023, 5751023, 603-5403, 6035403, Fits 2005-2007, Pictured Below*



P/N 29-070205

Coolant Reservoir Cap, *Replaces OE N5348001, Fits 2005-2007, Pictured Below*



P/N 29-070206

Coolant Reservoir Cap w/o Nipple, *Replaces OE RC0050, Fits 2005-2017, Pictured Below*



AC COMPRESSORS

P/N 29-070064

AC Compressor w/2 Groove Clutch, 2 Wire Male Spade Connector, 12 V, R134A Refrigerant, Ear Mount Type, 1.56" Gauge Line, 5.20" Clutch Diameter, 1" x 14 Tube O Port, *Replaces OE 22-47691-000, 4471, 4735, Fits 1987-2007, Pictured Below*



P/N 01-070000012

Sanden 4039 AC Compressor w/125mm 6 Groove Clutch For Peterbilt 300 Series, Serpentine Belt, *Replaces OE F69-6003-122, LF0122, Fits 1987-2007, Pictured Below*



P/N 01-070000020

Sanden 4368 AC Compressor w/119mm 8 Groove Clutch, Super HD Style, Serpentine Belt, 7 Cylinder, 9.5 Cubic Inch, O-Ring Pad @ 90 Degrees, 2 Wire Female Connector, 12 V, Pag 100 Oil Type, R134A Refrigerant, Ear Mount Type, 1.56" Gauge Line, Clockwise Rotation, Long Key Shaft, *Replaces OE F69-6003-111, Fits 1987-2007, Pictured Below*



P/N 01-070000011

Sanden 4042 AC Compressor w/119mm 8 Groove Clutch, Serpentine Belt, 7 Cylinder, 9.5 Cubic Inch, O-Ring Pad @ 90 Degrees, 2Lateral Fitting Post Position, 12 V, Pag 100 Oil Type, R134A Refrigerant, Diode Protection w/Diode, Clockwise Rotation, Long Key Shaft, *Replaces OE F69-1003, LF0111, Fits 1987-2007, Pictured Below*



P/N 29-070009

AC Compressor w/Clutch, *Replaces OE ABP N83 304659, ABP N83 304143, F69-1000, F69-6001-231, F69-6002-231, ZGG705129, 4041, 4426, 4696, Fits 1995-2007, Pictured Below*



P/N 01-070000010

Sanden 4040 AC Compressor w/125mm, 6 Groove Clutch, *Replaces OE F69-6002-122, LF0121, Fits 2005-2005*

P/N 01-070000021

Sanden SD7H15 AC Compressor w/125mm 6 Groove Clutch, Piston Type, 12 V, Vertical Port, Pad Mount Port, 1760mm Suction Port, 46mm Gauge Line, 14.8mm Discharge Port, 125mm Clutch Diameter, *Replaces OE F696002122, 204792, 509596, 97596, 1401405, 5366, 4040, 4425, CO2011CA, Fits 2005-2005*

AC DRIERS & RELATED

P/N 01-0700012

AC Drier, 10.75" x 3", #6 O-Ring Fittings w/Sight Glass & Fuse Plug, No Switch Port, *Replaces OE 18-03619, 088250-00, 71355100, ABP N83 319264, Fits 1993-1995, Pictured Below*



P/N 01-070009

Aluminum AC Drier, 7.28" CAN Length, 3.46" CAN Diameter, 8.97" Overall Length, Inlet & Outlet #12, *Replaces OE 18-03837, BSM319029, Fits 1995-2002, Pictured Below*



P/N 29-0700018

Aluminum AC Accumulator Drier, 9" x 3.5", *Replaces OE 18-04171, F31-6063, Fits 1998-2007, Pictured Below*



P/N 01-070000015

Aluminum AC Accumulator Drier, 9.12" x 3.5", Pad Type .75" #12 Inlet, Pad Type Outlet, R134A Refrigerant, *Replaces OE JC1200, 18-04171, F31-6063, Fits 1999-2007*

P/N 01-070000001

Copper/Brass & Aluminum AC Evaporator, 13.125" x 8.125" x 3.465", Copper Tube Thickness .375"/.013", Port 1 Thread .75" - 18 Unf, Port #2 Thread .75" - 18 Unf, .004" Fin Thickness, *Replaces OE 052621, 1517003, SR2000044, NC1000, RD214850, 76R6850, ZGG708029, RD-2-1485-0P, Fits 1987-1993, Pictured Below*



P/N 01-070000027

AC Evaporator, 11.875" x 7.875" x 3.125", *Replaces OE NC10000, RD214850, ABPN83307255, SR2000044, 76R6850, Fits 1988-1995, Pictured Below*



All items represented are aftermarket replacement parts. If you require OEM parts, please contact your nearest authorized Peterbilt dealer. Four State Trucks is not affiliated with Paccar or Peterbilt.

*** High Quality Aftermarket Replacement Part (Not OEM Parts).

www.BestFitTruckParts.com
855-220-8608

AFTERMARKET COLLISION PARTS



C ENGINE COOLING PARTS (cont.) **AC DRIERS & RELATED**

P/N 01-070014

AC Evaporator, 10.95" x 8.82" x 2.875",
Replaces OE NA150101S, P93CAB150101S,
P93CAB1501-01S, 500-2611, Fits 1994-2007,
Pictured Below



P/N 01-070025

AC Evaporator, 10.87" x 11" x 2.5", .53" Inlet,
.63" Outlet, Replaces OE 4712104, 3X010018,
6679, 2719516, 3X011171, E1059, 051403,
4005107, Fits 1998-2007, Pictured Below



P/N 01-070030

AC Evaporator, 6.755" x 8.75" x 2.875",
Replaces OE 10002270972, NA150102S,
P93CAC150102S, Fits 1994-2007,
Pictured Below



P/N 29-070022

Block Style AC Expansion Valve, Replaces
OE C80Z19849A, ABPN83308011, ABP
N83 308011, 540035, 1804275, 18-04275,
3916181, 134684073, 118321C1, 1280331C1,
4379RD568680, 605880C1, EA1065, EA1320,
RD571250, SR2000016, Fits 1987-2002

P/N 29-070047

Block Style AC Expansion Valve, Replaces
OE 3916182, 4379-RD570150, A22-45432-000,
BOA80332100129, EA10660, Fits 1997-2007,
Pictured Below



P/N 29-070042

Block Style AC Expansion Valve, Replaces
OE 540057BSM, 549708BSM, 579708BSM,
85100994, 929-513, ABPN83308141,
ABPN83308409, EA1310, F90-6001, F906001,
Fits 1999-2007

FAN SHROUDS

P/N 01-070601

Fiberglass Fan Shroud, Pre-Drilled Holes,
Gel-Coated On The Inside For Improved
Air Flow, Replaces OE 07-06681M001,
07-06680M001, 07-06685M001,
Fits 1987-1994, Pictured Below



P/N 01-070603

Fiberglass Fan Shroud, Pre-Drilled Holes,
Gel-Coated On The Inside For Improved
Air Flow, Replaces OE 07-06684M001,
07-06684M002-07-6684M003,
07-06685M002, Fits 1987-1994,
Pictured Below



P/N 01-070611

Fiberglass Fan Shroud, 35" Opening,
Pre-Drilled Holes, Gel-Coated On The
Inside For Improved Air Flow, Replaces OE
5S68905D2, Fits 1987-1994

P/N 01-070600

Fiberglass Fan Shroud, Pre-Drilled Holes,
Gel-Coated On The Inside For Improved
Air Flow, Replaces OE 07-06688M002,
07-06682M002, F22-6011M10,
07-06688M004, Fits 1994-2006

P/N 01-070604

Fiberglass Fan Shroud, Pre-Drilled Holes,
Gel-Coated On The Inside For Improved
Air Flow, Replaces OE 07-06686M002,
Fits 1995-2004

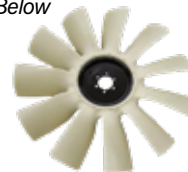
P/N 01-070602

Fiberglass Fan Shroud, Pre-Drilled Holes,
Gel-Coated On The Inside For Improved
Air Flow, Replaces OE F22-6031M01,
Fits 2004-2007

FAN BLADE

P/N 29-070267

32" Fan Blade, 11, Blades, 3.5" Diameter,
2.56" Pilot Diameter, 6 Bolt Mounting,
Clockwise Rotation, Replaces OE
4735-4403-12, Fits 1994-2004,
Pictured Below



**MANY OPTIONS AVAILABLE, GIVE US A
CALL FOR MORE INFORMATION.**

AC COMPONENTS

P/N 01-0702006

3" Stainless Lower Coolant Tube For CAT
Engines, E-Coated For Durability,
Replaces OE PC0706462, 07-06462,
Fits 1987-1994, Pictured Below



P/N 01-0702008

3" Stainless Coolant Tube For CAT
Engines, Replaces OE PC0705510,
07-005510, Fits 1987-1993, Pictured Below



P/N 01-0702012

3" Stainless Coolant Tube For CAT
Engines, Replaces OE F66-6152,
Fits 2004-2007, Pictured Below



P/N 01-0702013

3" Stainless Coolant Tube For CAT
Engines, Replaces OE F66-6167,
Fits 2004-2007, Pictured Below



P/N 01-0702014

3" Stainless Coolant Tube For CAT
Engines, Replaces OE PAC6251, F66-6251,
Fits 2004-2007, Pictured Below



P/N 01-0702016

3" Stainless Coolant Tube For CAT
Engines, Replaces OE F66-6236,
Fits 2004-2007, Pictured Below



*** High Quality Aftermarket Replacement Part (Not OEM Parts).

All items represented are aftermarket replacement parts. If you require
OEM parts, please contact your nearest authorized Peterbilt dealer.
Four State Trucks is not affiliated with Paccar or Peterbilt.

AFTERMARKET COLLISION PARTS



C ENGINE COOLING PARTS (cont.) AC COMPONENTS

P/N 01-0702031
2.5"-3" Stainless Lower Coolant Tube For
Cummins N14 Engines, *Replaces OE*
07-06464, *Fits 1987-2007, Pictured Below*



P/N 01-0702007
2.5" Stainless Coolant Tube For CAT
Engines, *Replaces OE PC0706508,*
07-06508, *Fits 1994-2004, Pictured Below*



P/N 01-0702010
2.5"-3" Stainless Coolant Tube For Detroit
Engines, *Replaces OE PD0706902,*
07-06902, *Fits 1994-2007, Pictured Below*



P/N 01-0702030
2.5" Stainless Upper Coolant Tube For
Cummins Engines, *Replaces OE 05-19262,*
Fits 1994-2007, Pictured Below



P/N 01-0702011
2.5" Stainless Coolant Tube For Detroit
Engines, *Replaces OE PB6468, 07-06468,*
Fits 1994-2007, Pictured Below



P/N 01-0702015
2.5" Stainless Coolant Tube For CAT
Engines, *Replaces OE PAC6151, F66-6151,*
Fits 2004-2007, Pictured Below



P/N 01-070240
Stainless 90 Degree Lower Coolant Tube
w/Single Mounting Tab For CAT 3406E
& CAT C15 Engines, *Replaces OE*
07-06462, *Fits 1995-2007, Pictured Below*



P/N 01-070241
Stainless Double Bend Upper Coolant
Tube, *Replaces OE 07-05723,*
Fits 1995-2007, Pictured Below



P/N 29-070610
Black Air Conditioning Driver Belt Idler
Pulley For Cummins 15.0L Engines, 1.669"
Bearing I.D., 3.413" Pulley O.D., 6 Grooves,
1 Lb Weight, *Replaces OE 3682229,*
Fits 1999-2007

P/N 29-070612
Tensioner Fan/Alternator For Cummins
15.0L Engines, 1.692" Width, 2.952" Pulley
O.D., 3 Lbs Weight, *Replaces OE 3400885,*
Fits 1987-2007

P/N 01-070021
AC High Pressure/Fan Override Switch,
M10 x 1.25 Metric Thread, Opens @ 200
PSI, Closes @ 270 PSI, Switch Is Normally
Open, *Replaces OE 18-03836,*
Fits 1978-2007

P/N 01-070022
AC High Pressure/Fan Override Switch,
M10 x 1.25 Metric Thread, Opens @
330-370 PSI, Closes @ 180-240 PSI, Switch
Is Normally Open, *Replaces OE*
18-03835, *Fits 1978-2007*

P/N 01-070023
AC Pressure Cycling Switch, M10 x 1.25
Metric Thread, On @ 47 PSI, Off @ 23 PSI,
Replaces OE 18-03834, Fits 1978-2007

P/N 01-07000023
2 Pin Low Pressure Switch w/Female
M10-1.25 Thread, R134A Refrigerant Type,
Open @ 330/370, Closed @ 180/240,
Replaces OE 18-03835, P93CAA3605-1,
Fits 1987-2007

P/N 01-07000024
2 Pin Low Pressure Switch w/Female M12
Thread, R134A Refrigerant Type, Open @
23 PSI, Closed @ 47 PSI, *Replaces OE*
18-03834, *P93CAA3604-1, 18-04331,*
Fits 1995-2007

P/N 01-07000025
Pressure Switch Pigtail Wire Harness
w/2 Wire Weatherpak Connector,
Fits 2000-2007

HEATER CORE

P/N 01-070037
Heater Core, Requires .625"-.75" Bushings,
Replaces OE 3X010005, Fits 1998-2007,
Pictured Below



ENGINE PARTS

P/N 01-070701
Plastic Windshield Washer Reservoir, Heat
Resistant, Direct Replacement, *Replaces*
OE R86-6001, R866001, Fits 1990-2005,
Pictured Below



P/N 29-070702
Plastic Windshield Washer Reservoir, Uses
Washer Pump 29-070703 & Reservoir
Cap 29-070700, *Replaces OE N5355001,*
Fits 2006-2007, Pictured Below



P/N 29-070701
Washer Reservoir Cap For Washer
Reservoir 01-070701, *Replaces OE 63361,*
Fits 1990-2005, Pictured Below



P/N 29-070703
Windshield Washer Pump Motor, Mounts
To The Bottom Of Washer Reservoir,
Fits 2006-2007, Pictured Below



*** High Quality Aftermarket Replacement Part (Not OEM Parts).

All items represented are aftermarket replacement parts. If you require
OEM parts, please contact your nearest authorized Peterbilt dealer.
Four State Trucks is not affiliated with Paccar or Peterbilt.

AFTERMARKET COLLISION PARTS



C ENGINE PARTS (cont.)

P/N 29-070704

Windshield Washer Pump Kit, Includes Washer Pump, Mounting Grommets, Harness, *Replaces OE 600228S, Fits 1987-2007, Pictured Below*



P/N 01-0714001

Power Steering Reservoir w/Cap, .687" Mounting Holes, *Replaces OE J86-6001, Fits 1997-2007, Pictured Below*



P/N 01-0714003

Power Steering Reservoir w/Cap & Mounting Bracket, .687" Mounting Holes, *Replaces OE J866005, Fits 1997-2007, Pictured Below*



P/N 01-0714002

Power Steering Reservoir Base & Bracket, .687" Mounting Holes, Mounting Holes 3.125" Apart, *Fits 1997-2007*

P/N 01-0714004

Power Steering Reservoir Base & Bracket, .687" Mounting Holes, Mounting Holes 3.125" Apart, *Fits 1997-2007*

P/N 01-0731000

Luk Power Steering Pump, *Replaces OE 21D6751, LF73, Fits 1987-2007, Pictured Below*



P/N 29-073100001

Power Steering Pump, 8.625"L x 6.75"W x 6.25"H, 11 Tooth, 2175 PSI, 4.23 GPM Flow Rate, EV Style, *Fits 1987-2007, Pictured Below*



P/N 29-071200

Water Pump, Dome Drive Gear, Straight Teeth, Press On Gear w/8" Opening, *Replaces OE 10R2776, 10R3326, 2243229, Fits 2004-2007, Pictured Below*



P/N 29-071302802

Aluminum Flywheel Housing, 20" Ring Gear, Starter Location, Driver Side 9 O'Clock, Angled Motor Mounts, SAE #1, *Replaces OE 1084749, 1302802, 3044150, Fits 1994-2002, Pictured Below*



P/N 29-071694153

Aluminum Flywheel Housing, 20" Ring Gear, Starter Location, Driver Side 9 O'Clock, Angled Motor Mounts, SAE #1, *Replaces OE 1694153, 2234739, 3044156, Fits 2000-2007, Pictured Below*



P/N 29-073680063

Aluminum Flywheel Housing, 20" Ring Gear, Starter Location, Driver Side 9 O'Clock, Angled Motor Mounts, SAE #1, *Replaces OE 3102196, 103584, 3412303, 3680063, 4026795, Fits 2001-2007, Pictured Below*



P/N 29-074N754

Cast Iron & Stainless Exhaust Manifold For CAT 3406A, 3406B & 3406C Engines, 3 Piece, Does Not Include Gaskets Or Mounting Hardware, *Replaces OE 9L5848, 1017354, 4W4384, 4N0270, 1017352, Fits 1987-1993, Pictured Below*



P/N 29-0704075

Ceramic-Coated Exhaust Manifold For Detroit 12.7L & 14L Series 60 Engines, *Replaces OE 23519348, 23511978, Fits 1993-2003, Pictured Below*



P/N 29-073406000

Cast Iron & Stainless Exhaust Manifold For CAT E-Model Engines, 3 Piece, *Replaces OE 133-3359, 4P5008, 146-9445, 1005693, Fits 1994-2003, Pictured Below*



P/N 29-0704070

Ceramic Coated Exhaust Manifold For CAT Engines, *Replaces OE 146-9445, Fits 1996-2004, Pictured Below*



P/N 29-0704072

Ceramic Coated Exhaust Manifold For Cummins ISX Engines, *Replaces OE 388-0199, Fits 1999-2003, Pictured Below*



P/N 29-071501914

Cast Iron Exhaust Manifold Kit For CAT C15 Engines, Includes 1 Center Section, 2 End Sections, 6 Manifold Mounting Gaskets, 1 Turbo Mounting Gasket, 4 Turbo Mounting Bolts, *Replaces OE 150-1914, 133-3359, CT1333359, Fits 2000-2004, Pictured Below*



P/N 29-0704087

Ceramic Coated Exhaust Manifold For Cummins ISX Engines, *Replaces OE 3682959, Fits 2003-2007, Pictured Below*



P/N 29-0704089

Stainless Exhaust Manifold & Turbo Gaskets For CAT 3406E Engines, Double Jacket Reinforced w/Graphite Filler, Sold As Kit, *Fits 1994-2004, Pictured Below*



P/N 29-0704093

Stainless Exhaust Manifold & Turbo Gaskets For ISX Engines, Double Jacket Reinforced w/Graphite Filler, *Replaces OE 3102314, 3682710, 3682940, Sold As Kit, Fits 2004-2007, Pictured Below*



*** High Quality Aftermarket Replacement Part (Not OEM Parts).

All items represented are aftermarket replacement parts. If you require OEM parts, please contact your nearest authorized Peterbilt dealer. Four State Trucks is not affiliated with Paccar or Peterbilt.

AFTERMARKET COLLISION PARTS



C ENGINE PARTS (cont.)

P/N 29-073411458

Front Engine Cover For Cummins N-14 Engines, Tilt Engine Application For Trunion Sleeve Must Be Used, *Replaces OE 3076496, 3411458, 5278786, Fits 2000-2007, Pictured Below*



P/N 09-077C3236

Oil Pan For CAT 3406E Engines, 9 Gallon, *Replaces OE 133-6084, 1504363, 1504638, 150-4640, 7W5249, Fits 1987-2002, Pictured Below*



P/N 09-071601428

Oil Pan For CAT C-15 Engines, 9 Gallon, *Replaces OE 160-1428, Fits 2000-2007, Pictured Below*



P/N 29-074952540

Oil Pan For Cummins ISX Engines, 10-12 Gallon, Front Or Rear Sump Applications, Gasket Not Included, *Replaces OE 3679945, 3680530, 3680531, 3687414, 3687415, 3690567, 4952540, 4952541, Fits 2001-2007, Pictured Below*



P/N 29-0749525401

Oil Pan Gasket For Cummins ISX Engines, *Replaces OE 4026684, Fits 1999-2007, Pictured Below*



P/N 01-070500001

Clutch Hex Bar, 20.5", 22.75"-25" Adjustment From Center To Center Mounting, Includes (2) Jam Nuts & Adjustable Ends, (1) End is Rubber Cushioned, (1) End is Swivel, *Fits 1987-2007*



D GRILLES & RELATED

P/N 01-1210301

Stainless Grille Insert w/Classic Style 3 Raised Bars For Long Hood Models, *Replaces OE 13-03508, Fits 1987-2007, Pictured Below*



P/N 01-1210402

Stainless Grille Insert w/18 Vertical Bars For Long Hood Models, *Fits 1987-2007, Pictured Below*



P/N 01-1210005

Stainless Grille Insert w/Horizontal Oval Holes For Long Hood Models, 41" Wide Top, 42.125" Wide Bottom, 35" Tall Sides, Grille Bars Not Included, *Fits 1987-2007, Pictured Below*



P/N 01-1210006

Stainless Grille Insert w/Oval Holes For Standard Hood Models, 33.75" Wide Top, 42.125" Wide Bottom, Grille Bars Not Included, *Fits 1987-2007, Pictured Below*



P/N 01-1210102

Stainless Louvered Grille Insert w/16 Bars For Long Hood Models, *Fits 1987-2007, Pictured Below*



P/N 01-1210103

Stainless Louvered Grille Insert w/15 Bars For Standard Hood Models, *Fits 1987-2007, Pictured Below*



P/N 01-1210403 (Long Hood)

P/N 01-1210405 (Standard Hood) Stainless Python Grille Insert w/18 Horizontal Bars, *Fits 1987-2007, Pictured Below*



P/N 01-1210304

Stainless Classic Style Grille Insert w/3 Non Removable Raised Bars For Standard Hood Models, *Replaces OE 13-03507, Fits 1987-2007, Pictured Below*



GRILLE SURROUNDS & TRIM

P/N 01-1210500

Stainless Economy Grille Surround For Long Hood Models, 4 Piece Kit Includes Top Grille Crown, Left Grille Side, Right Grille Side, Lower Grille Trim, *Replaces OE 13-03515P, 13-03964M001L-P, 13-03964M001R-P, 13-03546P, Fits 1987-2007, Pictured Below*



P/N 01-1210510

Stainless Grille Surround For Short Hood Models, 4 Piece Kit Includes Top Grille Crown, Left Grille Side, Right Grille Side, Lower Grille Trim, *Fits 1987-2007, Pictured Below*



*** High Quality Aftermarket Replacement Part (Not OEM Parts).

All items represented are aftermarket replacement parts. If you require OEM parts, please contact your nearest authorized Peterbilt dealer. Four State Trucks is not affiliated with Paccar or Peterbilt.

AFTERMARKET COLLISION PARTS



D GRILLES & RELATED (cont.) GRILLE SURROUNDS & TRIM

P/N 01-1210701

Stainless Grille & Surround Assembly For Long Hood Models, Fits 1987-2007, Pictured Below



P/N 01-121000002

Polished Aluminum Grille Top Crown Trim For Long Hood Models, Replaces OE 13-03515P, RPGP004, RF549562, Fits 1987-2007, Pictured Below



P/N 01-1210527

Chrome Plated Steel Upper Grille Top Crown Trim For Long Hood Models, Replaces OE 13-03515P, RPGP004, RF549562, Fits 1987-2007, Pictured Below



P/N 01-1210528 (Left)
P/N 01-1210529 (Right)

Chrome Plated Steel Side Grille Trim For Long Hood Models, 1.375" Hole Diameter, 35.5" Long, Replaces OE 13-03964M001L-P, 13-03964M001R-P, RPGP007, RPGP006, RF549564, RF549565, Fits 1987-2007, Pictured Below



P/N 01-1210530

Chrome Plated Steel Lower Grille Trim For Long Hood Models, Replaces OE 13-03546P, RPGP010, RF549563, Fits 1987-2007, Pictured Below



P/N 01-1210501 (Aluminum)

P/N 01-1210520 (Stainless)

P/N 01-1210533 (Polished Stainless)

Front Grille Insert Upper & Lower Trim Rings For Long Hood Models, Low Profile, Mounts Around Grille Insert, Replaces 2 Piece Aluminum w/1 Piece Trim Ring, Replaces OE 13-03529P, RPGP011, 13-03530P, 13-03531P, RPGP012, RPGP013, Fits 1987-2007, Pictured Below



P/N 01-120701 (Long Hood)

P/N 01-120702 (Standard Hood)

Black Mesh Grille Screen w/Rock Guard, Installs Behind Grille, Cross Boards For Additional Support, Mount & Clearance Holes Are Die-Cut For Consistent Fit, Replaces OE 13-04346, 13-04345, Fits 1987-2007, Pictured Below



P/N HUCKKIT379

Grille Surround Huck Kit, Fits 1987-2007

P/N 01-1210513

Stainless Bolt Kit For Grille Surround, Fits 1987-2007

STANDARD GRILLE GUARDS

P/N 01-01301K

Stainless ProTec Standard Grille Guard, 3" Heavy Duty Tubes, Mounts To Existing Bumper, Mounting Brackets Included, No Drilling Or Modifications Needed, Fits 1987-2007, Pictured Below



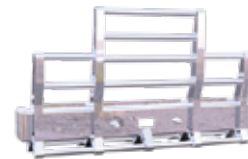
P/N 01-01300K

Stainless TuffGuard Standard Grille Guard, 3" Heavy Duty Tubes, Mounts To Existing Bumper, Mounting Brackets Included, No Drilling Or Modifications Needed, Fits 1987-2007, Pictured Below



P/N 01-0130019

Aluminum Grille Guard, 4 Post, 3" Trim, Skirt, 1 Center Support, Fits 1987-2007, Pictured Below



HERD DEFENDER 2 & 4 POST GRILLE GUARDS

P/N 01-013000004 (2 Uprights, Horizontal 3" Tubes)

P/N 01-01323 (4 Uprights, Horizontal, 3" Tubes)

Herd Defender Grille Guard, Mirror Polish Finish Aluminum, Fully Boxed-In Uprights, 12" Extruded Aluminum Bumper, 3" Tubes, 2 Eyebolts, Side & Center Lower Rake, Impact Plates, Light Mounting Tabs, Fits 1987-2007, Pictured Below



P/N 01-013000058 (2 Uprights, Horizontal 3" Tubes)

P/N 01-013000002 (4 Uprights, Horizontal 3" Tubes)

Herd Aero Grille Guard, Mirror Polish Finish Aluminum, Fully Boxed-In Uprights, 18" Extruded Aluminum Bumper, 3" Tubes, 2 Eyebolts, Side & Center Lower Rake, Impact Plates, Light Mounting Tabs, Fits 1987-2007, Pictured Below



HERD BIG TEX 4 POST GRILLE GUARDS

P/N 01-013000003 (4 Uprights, Horizontal, 3" Tubes)

Herd Big Tex Grille Guard, Mirror Polish Finish Aluminum, Fully Boxed-In Uprights, 18" Extruded Aluminum Bumper, 3" Tubes, 2 Eyebolts, Side & Center Lower Rake, Impact Plates, Light Mounting Tabs, Fits 1987-2007, Pictured Below



*** High Quality Aftermarket Replacement Part (Not OEM Parts).

All items represented are aftermarket replacement parts. If you require OEM parts, please contact your nearest authorized Peterbilt dealer. Four State Trucks is not affiliated with Paccar or Peterbilt.

PETERBILT 379

Fits

www.BestFitTruckParts.com
855-220-8608

AFTERMARKET COLLISION PARTS



D GRILLES & RELATED (cont.) HERD TEXAS 4 POST GRILLE GUARDS

P/N 01-013000006 (4 Uprights, Horizontal, 3" Tubes)
Herd Texas Grille Guard, Mirror Polish
Finish Aluminum, Fully Boxed-In Uprights,
18" Extruded Aluminum Bumper, 3" Tubes,
2 Eyebolts, Side & Center Lower Rake,
Impact Plates, Light Mounting Tabs,
Fits 1987-2007, Pictured Below



HERD ROAD TRAIN 4 POST GRILLE GUARDS

P/N 01-013000005 (4 Uprights, Horizontal 3" Tubes)
Herd Road Train 4 Post Grille Guard, Mirror
Polish Finish Aluminum, 4 Fully Boxed-In
Uprights, 18" Extruded Aluminum Bumper,
3" Horizontal Tubes, 2 Eyebolts, Side &
Center Lower Rake, Impact Plates, Light
Mounting Tabs, Fits 1987-2007,
Pictured Below



HERD SUPER ROAD TRAIN 4 POST GRILLE GUARDS

P/N 01-01326
Herd Super Road Train 4 Post Grille Guard,
Mirror Polish Finish Aluminum, 4 Fully
Boxed-In Uprights, 18" Extruded Aluminum
Bumper, 3" Horizontal Tubes, 2 Eyebolts,
Baluster Reinforced Lower Rake, Impact
Plates, Light Mounting Tabs, Fits 1987-2007,
Pictured Below



OTHER HERD GRILLE GUARD OPTIONS
IN EACH STYLE ARE AVAILABLE, GIVE US
A CALL FOR MORE INFORMATION.

E HOODS & RELATED

P/N 01-12500

Fiberglass Long Hood Shell w/Grille &
Fenders, 64" At Centerline Of Grille, 68.75"
Overall Length Including Grille, Replaces
OE 13-03553, L92-6062, Fits 1987-2007,
Pictured Below



P/N 01-12550

Fiberglass Long Hood Shell w/Fenders,
62" To Rear Of Grille, 68" To Front Of Grille,
Reinforced Mounting Area, E-Coated
Hardware, Replaces OE 13-03553,
L92-6062, Fits 1987-2007, Pictured Below



P/N 01-12506

Fiberglass Long Hood Shell w/Aluminum
Fenders & Stainless Grille, 68" Center
Length, Replaces OE 13-03553, L92-6062,
Fits 1987-2007, Pictured Below



P/N 01-12507

Aluminum Long Hood Shell w/Fiberglass
Fenders & Stainless Grille, 68" Center
Length, Replaces OE 13-03553, L92-6062,
Fits 1987-2007, Pictured Below



P/N 01-12502

Fiberglass Standard Hood Shell w/Fenders,
55" To Rear Of Grille, 60.5" To Front Of
Grille, Reinforced Mounting Area,
E-Coated Hardware, Fits 1987-2007,
Pictured Below



P/N 01-12511

Fiberglass Standard Hood Shell, 55" To Rear
Of Grille, Built-In Hinge Gussets, Rein-
forced Mounting Area, E-Coated Hardware,
Fits 1987-2007, Pictured Below



P/N 01-12531

Fiberglass Standard Hood Shell w/Fenders
& Stainless Grille, 60.5" Center Length,
Replaces OE 13-03552, L29-6061,
Fits 1987-2007, Pictured Below



P/N 01-12504

Fiberglass Fiberglass Center Hood Section
w/Stainless Grille Surround, No Fenders,
Replaces OE 13-03553, L29-6062,
Fits 1987-2007, Pictured Below



*** High Quality Aftermarket Replacement Part (Not OEM Parts).

All items represented are aftermarket replacement parts. If you require
OEM parts, please contact your nearest authorized Peterbilt dealer.
Four State Trucks is not affiliated with Paccar or Peterbilt.

AFTERMARKET COLLISION PARTS



E HOODS & RELATED (cont.)

P/N 01-12416 (Left)
P/N 01-12417 (Right)
Aluminum Side Hood Panel For Long Hood Models, Pre-Drilled, Scuffed & Sanded, Replaces OE 13-03585L, 13-03585R, Fits 1987-2007, Pictured Below



P/N 01-12419 (Left)
P/N 01-12420 (Right)
Aluminum Side Hood Panel For Standard Hood Models, Pre-Drilled, Scuffed & Sanded, Replaces OE 13-03584L, 13-03584R, Fits 1987-2007, Pictured Below



P/N 01-12421 (Left)
P/N 01-12422 (Right)
Aluminum Top Hood Panel For Long Hood Models, Pre-Drilled, Scuffed & Sanded, Replaces OE 13-04333L, 13-04333R, Fits 1987-2007, Pictured Below



P/N 01-124050 (Left)
P/N 01-124051 (Right)
1.5" Black Urethane Top Hood Panel Foam Insulation For , Peel & Stick Installation, Reduces Heat Distribution & Vibration, Cut To Size, Fits 1987-2007, Pictured Below



P/N 01-12400
Poly Hood Support Popsicle Kit, Includes Hood Rest, Mount Bushings & Hardware, 6.5" Overall Length, .625" & 3.75" Thread Size, Services 1 Side, Fits 1987-2007, Pictured Below



P/N 01-12429
Red Poly Hood Cone Support, Replaces OE 13-04609, Fits 1987-2007, Pictured Below



P/N 01-12402
Black Poly Center Hood Rest, Replaces OE 13-03510, Fits 1987-2007, Pictured Below



P/N 01-12418
Black Poly Upper Hood Rest, Snap On Style, Helps Keep Hood Flat When Closed, Replaces OE 13-04711, Fits 1987-2007

P/N 01-12410
Poly Hood Hinge Bushing Kit, Includes (1) Square & (3) Round Bushings w/Sleeves, Services 1 Position, Replaces OE 13-04164, 13-04154, Fits 1987-2007, Pictured Below



P/N 01-124101
Black Poly Hood Hinge Bushing, Includes (1) Square Bushing & (1) Sleeve, Services 1 Position, Replaces OE 13-04164, Fits 1987-2007

P/N 01-124102
Black Poly Hood Hinge Bushing, Includes (1) Round Bushing & (1) Sleeve, Services 1 Position, Need 3 Per Hood Hinge, Replaces OE 13-04154, Fits 1987-2007

P/N 01-12403
Poly Hood Roller, 1.5" O.D. x 1.75" Width w/.375" Center Hole, Replaces OE 13-03593, Fits 1987-2007, Pictured Below



P/N 01-12406
Black Poly Large Hood Roller, 1.125" O.D. x 1.5" Width w/.375" Center Hole, Replaces OE 13-04391, Fits 1987-2007, Pictured Below



P/N 01-12440 (Left)
P/N 01-12441 (Right)
Hood Pivot Complete Assembly, Includes (1) Pivot Bracket, (1) Pivot Bolt Lock Channel, (2) .5" Bolts, (2) .5" Flat Washers, (2) .5" x 1.75" Fender Washers, (1) Square Hood Hinge Bushing, (3) Round Hood Hinge Bushings, (1) Hood Pivot Plate, (2) .5" Lock Washers, (2) .5" Deep Nuts & (1) Lower Hood Pivot, Replaces OE 13-04730L, 13-04730R, Fits 1987-2007, Pictured Below



P/N 01-12432 (Left)
P/N 01-12433 (Right)
Hood Mount Pivot, Replaces OE 13-04626L, 13-04626R, Fits 1987-2007, Pictured Below



P/N 01-12434 (Left)
P/N 01-12435 (Right)
Steel Lower Hood Pivot, Replaces OE 13-04708L, 13-04708R, Fits 1987-2007, Pictured Below



P/N 01-12438 (Left)
P/N 01-12439 (Right)
Hood Pivot Bracket, Replaces OE 13-04286L, 13-04286R, Fits 1987-2007, Pictured Below



P/N 01-124310
Hood Pivot Bolt, 0.160" x 4.35", Replaces OE L34-6021, Fits 1987-2007, Pictured Below



P/N 01-124312
Hood Pivot Bolt Kit w/Bushing Sleeve, Replaces OE 23-15273, Fits 1987-2007, Pictured Below



P/N 01-124311
Nut For Hood Pivot Bolt, Replaces OE HWC07084, Fits 1987-2007, Pictured Below



*** High Quality Aftermarket Replacement Part (Not OEM Parts).

All items represented are aftermarket replacement parts. If you require OEM parts, please contact your nearest authorized Peterbilt dealer. Four State Trucks is not affiliated with Paccar or Peterbilt.

AFTERMARKET COLLISION PARTS

Fit PETERBILT 379



E HOODS & RELATED (cont.)

P/N 01-12442
Lock Channel For Hood Pivot, *Replaces OE 13-04702, Fits 1987-2007, Pictured Below*



P/N 01-124001
Hood Spring For Long Hood Models, *Replaces OE 13-04638, Fits 1996-2007, Pictured Below*



P/N 01-124002
Hood Spring For Long Hood Models, *Replaces OE 13-03569, Fits 1987-2007, Pictured Below*



P/N 01-124003
Hood Spring For Standard Hood Models, 1.537" x 13.375", 20.5" Overall Length, *Replaces OE 13-03879, Fits 1987-2007, Pictured Below*



P/N 01-124004
Hood Cable, Heavier Gauge & Upgraded Material Than OEM Part, *Replaces OE L92-6000-0718, Fits 1987-2007, Pictured Below*



P/N 01-12469
23" Hood Cable, Corrosion Resistant Material, *Replaces OE L92-6000-0580, Fits 1987-2007, Pictured Below*



P/N 01-12454
Stud For Hood Spring, Mounts To Hood Side, *Replaces OE 13-03662, Fits 1987-2007, Pictured Below*



P/N 01-12455
Stud For Cable, Mounts To Hood Side, *Replaces OE 13-03663, Fits 1987-2007, Pictured Below*



P/N 01-12466
3" Stud For Hood Cable & Hood Spring, Mounts To Radiator, *Replaces OE 13-03761, Fits 1987-2007, Pictured Below*



P/N 01-12400003
.5" x 20 x .906" Zinc UNF Standard Threaded Insert For Hood Cable & Hood Spring Stud, *Fits 1987-2007, Pictured Below*



P/N 01-12477
Hood Mount, *Fits 1987-2007, Pictured Below*



P/N 29-124000
Hood Latch Kit For Left Or Right Side, 2 Kits Required Per Truck, *Replaces OE L56-0001, 13-04339, 23-13857, Fits 1987-2007, Pictured Below*



P/N 01-12430
Black Poly Hood Guide Grommet, *Replaces OE 13-03170, 13-03425, Fits 1987-2007, Pictured Below*



P/N 01-094000003
49" Hood Cowl Rubber Seal, *Replaces OE L42-6006-1244, Fits 1987-2007, Pictured Below*



HOOD/FENDER MIRRORS

P/N 09-123003
Stainless Fender Mount Mirror, 3 Adjustable Legs, 8.5" Convex Mirror, *Fits 1987-2007, Pictured Below*



P/N 09-123004
Stainless Fender Mount Mirror, Single Arm, *Fits 1987-2007, Pictured Below*



P/N 09-123006
Stainless Hood Mount Mirror, Retractable Arms, 8" Convex Mirror, *Fits 1987-2007, Pictured Below*



P/N 09-0915057
Stainless Pod Hood Mount Mirror Kit, Aerodynamic Design, 8.5" Convex Mirror, (4) .25" Mounting Studs, Bracket Included, For Driver Or Passenger Side, *Replaces OE MX1-917SSA, 877, Fits 1987-2007, Pictured Below*



P/N 09-0915058
Stainless Short Adjustable Tripod Hood Mirror, 8.5" Convex Mirror, 21"-32.75", Brackets Included, For Driver Or Passenger Side, *Fits 1987-2007, Pictured Below*



P/N 09-0915072
Stainless Fixed Tripod Fender Mount Mirror, *Fits 1987-2007, Pictured Below*



BUG SHIELDS

P/N 01-12225
Heavy Duty Belmor Aeroshield II Smoked Bug Shield For Standard Hood Models, Polycarbonate Material & Aluminum, *Fits 1987-2007, Pictured Below*



*** High Quality Aftermarket Replacement Part (Not OEM Parts).

All items represented are aftermarket replacement parts. If you require OEM parts, please contact your nearest authorized Peterbilt dealer. Four State Trucks is not affiliated with Paccar or Peterbilt.

www.BestFitTruckParts.com
855-220-8608

AFTERMARKET COLLISION PARTS



E HOODS & RELATED (cont.) BUG SHIELDS

P/N 01-12227

Heavy Duty Belmor Aeroshield II Smoked Bug Shield For Long Hood, Polcarbonate Material & Aluminum, Fits 1987-2007, Pictured Below



P/N 01-12218

44" Stainless Bug Shield For Long Hood Models, Hardware Included, Drilling Required For Installation, Fits 1987-2007, Pictured Below



P/N 01-12220

Stainless Bug Shield For Standard Hood, Hardware Included, Drilling Required For Installation, Fits 1987-2007, Pictured Below



BUG SCREENS

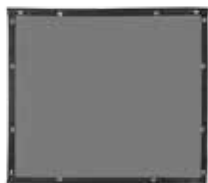
P/N 01-1204198805

Plain Black Mesh Bug Screen For Standard Hood Models, 14 Turnbuckles, Fits 1987-2007, Pictured Below



P/N 01-1204198905

Plain Black Mesh Bug Screen For Long Hood Models, 14 Turnbuckles, Fits 1987-2007, Pictured Below



P/N 01-120901

Hardware Kit For Bug Screens & Winter Fronts, Fits 1987-2007, Pictured Below



FRONT FENDERS & RELATED

P/N 01-1201000

Fender Shields, Bolt To Factory Step On Front Of Fender, Sold As A Pair, Fits 1987-2007, Pictured Below



P/N 01-12706 (Left)

P/N 01-12707 (Right)

Aluminum Front Fender, Fender Liner, Sold Separately, Replaces OE 15-04905M001L, 15-04905M001R, OEM Part Not An Aftermarket Part, Fits 1987-2007, Pictured Below



P/N 01-12734 (Left)

P/N 01-12733 (Right)

Aftermarket Fiberglass Fender w/Liner, Standard, Replaces OE 15-04905M001L, 15-04905M001R, Fits 1987-2007, Pictured Below



P/N 01-12732

Aftermarket Fender Liner, Replaces OE 15-06080, Fits 1987-2007, Pictured Below



F WHEELS & RELATED

P/N 09-2015221

22.5" Hub Pilot White Powder-Coated Steel Wheel w/2 Hand Holes, 10 Hole Wheel, Can Be Used As Steer Or Drive Axle Wheel, 70 lbs, Fits 1987-2007, Pictured Below



P/N 09-2015242

24.5" Hub Pilot Accuride Accu-Lite White Powder-Coated Steel Wheel, w/5 Hand Holes, 10 Hole Wheel, Can Be Used As Steer Or Drive Axle Wheel, 70 lbs, Fits 1987-2007, Pictured Below



P/N 09-20132231 (22.5")

P/N 09-20132431 (24.5")

Hub Pilot Accuride Accu-Lite Aluminum Wheel, New Ultra-Enhanced Finish, Polished Both Sides, Can Be Used As Steer Or Drive Axle Wheel, 45 lbs, Fits 1987-2007, Pictured Below



**SAVE TIME
& SHIPPING
COSTS.**

Get many quality products
conveniently from one provider.



855-220-8608

*** High Quality Aftermarket Replacement Part (Not OEM Parts).

All items represented are aftermarket replacement parts. If you require OEM parts, please contact your nearest authorized Peterbilt dealer. Four State Trucks is not affiliated with Paccar or Peterbilt.

AFTERMARKET COLLISION PARTS



G CAB & RELATED CAB LIGHTS

P/N 09-1608077
Chrome Bullet Cab Light, Truck Lite Style, Incandescent, Fits 1987-2007, Pictured Below



P/N 09-1608078
Chrome Square Cab Light, 10.5"L x 3.875"W x 2.625"H, Amber Lens, Incandescent, Fits 1987-2007, Pictured Below



P/N 09-1608079
Chrome Square LED Cab Light, Amber Lens, Fits 1987-2007, Pictured Below



P/N 09-1608054 (Amber Lens)
P/N 09-1608055 (Clear Lens)
Chrome Beehive LED Cab Light, Amber Light, 13 Diodes, 2 Wire Hook Up w/180 Bullet Terminals, Fits 1987-2007, Pictured Below



AIR HORNS & RELATED

P/N 09-051333 (29")
P/N 09-051327 (26")
29" Chrome Square Hadley Style Air Horn, Fits 1987-2007, Pictured Below



P/N 09-051330
Hadley Style Air Horn Pedestal Kit For Front Mount, Fits 1987-2007

P/N 29-0513126
Hadley Style Air Horn Pedestal Kit, Single Bolt Installation, Fits 1987-2007

SUN VISORS

P/N 01-09013038
9" Chrome Plated Steel Bowtie Drop Visor For Ultracab Or Flat Top Models w/2 Piece Flat Windshields & Cab Or Door Mounted Mirrors, 1 Piece, Bowtie Style, Blind Mount, Fits 1987-2007, Pictured Below



P/N 01-0900001
9" 304 Stainless Drop Visor, 1 Piece, Short Style, Paintable, Sanding & Preparation Needed Before Painting, Fits 1987-2007, Pictured Below



P/N 01-0901203
9" 304 Stainless Bowtie Drop Visor, 9" Sides & 5" Middle, 1 Piece, Short Bowtie Style, Paintable, Sanding & Preparation Needed Before Painting, Fits 1987-2007, Pictured Below



P/N 01-09003072
9" Stainless Drop Visor, 9" Sides & 5" Middle, 1 Piece, Short Forward Bowtie Style, Paintable, Sanding & Preparation Needed Before Painting, Fits 1987-2007, Pictured Below



P/N 01-09013047K
10" Stainless Bowtie Drop Visor For Ultracab Or Flat Top Models Cab Or Door Mounted Mirrors, 10" Sides & 6" Middle, 2 Piece, Bowtie Style, Blind Mount, Fits 1987-2007, Pictured Below



P/N 01-09013022
10.5" Stainless Bowtie Drop Visor For Ultracab Or Flat Top Models w/2 Piece Flat Windshields & Door Mounted Mirrors, 10.5" Sides & 8" Middle, 2 Piece, Blind Mount, Fits 1987-2004, Pictured Below



P/N 01-0901104
10.5" Stainless Bowtie Drop Visor For Ultracab Or Flat Top Models w/2 Piece Flat Windshields & Cab Or Door Mounted Mirrors, 10.5" Sides & 6" Middle, 1 Piece, Bowtie Style, Blind Mount, Fits 2005-2007, Pictured Below



P/N 01-09003077
10.5" Stainless Untie Drop Visor For Ultracab Or Flat Top Models w/2 Piece Flat Windshields & Cab Mounted Mirrors, 10.5" Sides & 6" Middle, Darwin Style, Blind Mount, Fits 2005-2007, Pictured Below



P/N 01-09013010
11" Stainless Extra Wide Bowtie Drop Visor For 2 Piece Flat Windshields, 11" Sides & 7.5" Middle, 2 Piece, Blind Mount, Fits 1987-2007, Pictured Below



P/N 01-09003060
11" Stainless Drop Visor For Ultracab Or Flat Top Models w/2 Piece Flat Windshields & Cab Or Door Mounted Mirrors, 2 Piece, Straight Style, Blind Mount, Uses Factory Bracket Locations For Installation Except On Factory Fiberglass Visors, Fits 1987-2007, Pictured Below



P/N 01-090000004
11" Stainless Drop Visor w/(10) .75" Clear Lens Amber Lights For 2 Piece Windshields, Post Mount, Darwin Style, Fits 2005-2007, Pictured Below



P/N 01-0901101
12" Aluminum Bowtie Drop Visor For 2 Piece Flat Windshield Models, 12" Sides & 10" Middle, 1 Piece, Blind Mount, Must Be Painted, Fits 1987-2007, Pictured Below



AFTERMARKET COLLISION PARTS



G CAB & RELATED SUN VISORS (cont.)

P/N 01-0901105

12" Aluminum Reverse Bowtie Drop Visor For Ultracab Or Flat Top Models w/2 Piece Flat Windshields & Cab Or Door Mounted Mirrors, 12" Sides & 8" Middle, 1 Piece, Blind Mount, Must Be Painted, Fits 1987-2007, Pictured Below



P/N 01-0901106

12" Aluminum Bowtie Drop Visor For Ultracab Or Flat Top Models w/2 Piece Flat Windshields & Cab Or Door Mounted Mirrors, 12" Sides & 8" Middle, 2 Piece, Blind Mount, Must Be Painted, Fits 1987-2007, Pictured Below



P/N 01-09013017

12" Stainless Reverse Bowtie Drop Visor For Ultracab Or Flat Top Models w/2 Piece Flat Windshields & Cab Or Door Mounted Mirrors, 12" Sides & 8" Middle, 1 Piece, Blind Mount, Fits 1987-2007, Pictured Below



P/N 01-09013018

12" Stainless Bowtie Drop Visor For Ultracab Or Flat Top Models w/2 Piece Flat Windshields & Cab Or Door Mounted Mirrors, 12" Sides & 8" Middle, 1 Piece, Blind Mount, Fits 1987-2007, Pictured Below



P/N 01-09013020

12" Stainless Mighty Wicked Drop Visor For Ultracab Or Flat Top Models w/2 Piece Flat Windshields & Cab Or Door Mounted Mirrors, 12" Sides & 8" Middle, 1 Piece, Blind Mount, Kicked Out From Window & Pinched In The Middle, Fits 1987-2007, Pictured Below



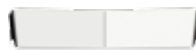
P/N 01-0901107

12" Aluminum Mighty Wicked Drop Visor For Ultracab Or Flat Top Models w/2 Piece Flat Windshields & Cab Or Door Mounted Mirrors, 12" Sides & 8" Middle, 1 Piece, Blind Mount, Kicked Out From Window & Pinched In The Middle, Must Be Painted, Fits 1987-2007, Pictured Below



P/N 01-09003112

12" Chrome Plated Steel Drop Visor For Ultracab & Flat Top Models w/2 Piece Flat Windshields & Cab Or Door Mounted Mirrors, 1 Piece, Straight Style, Blind Mount, Hardware Included, Fits 1987-2007, Pictured Below



P/N 01-09013035

12" Chrome Plated Steel Bowtie Drop Visor For Ultracab & Flat Top Models w/2 Piece Flat Windshields & Cab Or Door Mounted Mirrors, 12" Sides & 8" Middle, 1 Piece, Bowtie Style, Blind Mount, Fits 1987-2007, Pictured Below



P/N 01-09013036

12" Chrome Plated Steel Reverse Bowtie Drop Visor For Ultracab & Flat Top Models w/2 Piece Flat Windshields & Cab Or Door Mounted Mirrors, 12" Sides & 8" Middle, 1 Piece, Bowtie Style, Blind Mount, Fits 1987-2007, Pictured Below



P/N 01-09013037

12" Chrome Plated Steel Forward Bowtie Drop Visor For Ultracab & Flat Top Models w/2 Piece Flat Windshields & Cab Or Door Mounted Mirrors, 12" Sides & 8" Middle, 1 Piece, Bowtie Style, Blind Mount, Fits 1987-2007, Pictured Below



P/N 01-0901201

12" 304 Stainless Paintable Reverse Bowtie Drop Visor, 12" Sides & 8" Middle, Sanding & Preparation Needed Before Painting, Fits 1987-2007, Pictured Below



P/N 01-0901205

12" 304 Stainless Paintable Bowtie Drop Visor, 12" Sides & 8" Middle, Sanding & Preparation Needed Before Painting, Fits 1987-2007, Pictured Below



P/N 01-0903202

12" 304 Stainless Paintable Straight Drop Visor, Blind Mount, Sanding & Preparation Needed Before Painting, Fits 1987-2007, Pictured Below



P/N 01-0901601

12" 304 Stainless Forward Bowtie Drop Visor, 12" Sides & 8" Middle, Standard Mount, Fits 1987-2007, Pictured Below



P/N 01-0901301

12.5" 304 Stainless Bowtie Drop Visor For Ultracab Or Flat Top Models w/2 Piece Flat Windshields & Cab Or Door Mounted Mirrors, 12.5" Sides & 10" Middle, 1 Piece, Blind Mount, Uses 1 Center Bracket, Factory Brackets Need To Be Removed, Fits 1987-2007, Pictured Below



P/N 01-0900101

12.5" Aluminum Drop Visor For Ultracab & Flat Top Models w/2 Piece Flat Windshields & Cab Or Door Mounted Mirrors, 1 Piece, Blind Mount, Fits 1987-2007, Pictured Below



P/N 01-09013007

12.5" Stainless Bowtie Drop Visor For Flat Top Models w/2 Piece Flat Windshields & Cab Mounted Mirrors, 12.5" Sides & 10.5" Middle, 2 Piece, Standard Mount, Fits 2005-2007, Pictured Below



P/N 01-09003034

13" Stainless Gangster Drop Visor For Flat Top Models w/2 Piece Flat Windshields & Door Mounted Mirrors, 16" Sides & 13" Middle, 2 Piece, Straight Style, Standard Mount, Fits 1987-2004, Pictured Below



*** High Quality Aftermarket Replacement Part (Not OEM Parts).

All items represented are aftermarket replacement parts. If you require OEM parts, please contact your nearest authorized Peterbilt dealer. Four State Trucks is not affiliated with Paccar or Peterbilt.

AFTERMARKET COLLISION PARTS



G CAB & RELATED (cont.) SUN VISORS

P/N 01-09003161

13" Stainless Drop Visor For Low Roof Models, 2 Piece, Standard Mount, Fits 2004-2007, Pictured Below



P/N 01-09003029

13" Stainless Gangster Drop Visor w/2 Piece Flat Windshields & Door Mounted Mirrors, 16" Sides & 13" Middle, 2 Piece, Straight Style, Standard Mount, Fits 2005-2007, Pictured Below



P/N 01-09003025

13.5" Stainless Drop Visor For Flat Top Models w/2 Piece Flat Windshields & Door Mounted Mirrors, 2 Piece, Straight Style, Standard Mount, Fits 1987-2005, Pictured Below



P/N 01-09003021

13.5" Stainless Drop Visor For Flat Top Models w/2 Piece Flat Windshields & Door Mounted Mirrors, 2 Piece, Straight Style, Blind Mount, Fits 2005-2007, Pictured Below



P/N 01-09013002

14" 430 Stainless Bowtie Drop Visor For Ultracab Or Flat Top Models w/2 Piece Flat Windshields & Cab Or Door Mounted Mirrors, 2 Piece w/4 Mounting Brackets, Factory Style, Standard Mount, Fits 1999-2001, Pictured Below



P/N 01-09003059

14" Stainless Drop Visor For Ultracab Or Flat Top Models w/2 Piece Flat Windshields & Cab Or Door Mounted Mirrors, 2 Piece, Straight Style, Blind Mount, Fits 1987-2007, Pictured Below



P/N 01-09003137

14" Stainless Drop Visor w/10 Bullseye Amber LED Lights For Ultracab Or Flat Top Models w/2 Piece Flat Windshields & Cab Or Door Mounted Mirrors, 2 Piece, Straight Style, Blind Mount, Use Factory Bracket Locations For Installation, Fits 1987-2007, Pictured Below



P/N 01-09003155

14" Stainless Drop Visor For Flat Top Models w/2 Piece Flat Windshields & Door Mounted Mirrors, Blind Mount, Fits 1987-2005, Pictured Below



P/N 01-09003001

14" Stainless Drop Visor For Ultracab Models w/2 Piece Flat Windshields & Cab Mounted Mirrors, 17" Sides & 14" Middle, 2 Piece, Standard Mount, (6) Brackets & Mounting Instructions Included, Fits 2005-2007, Pictured Below



P/N 01-09003043

14" Stainless Wicked Drop Visor For Ultracab Models w/2 Piece Flat Windshields & Cab Mounted Mirrors, 2 Piece, Blind Mount, Mounting Instructions Included, Fits 2005-2007, Pictured Below



P/N 01-09003053

14" Stainless Drop Visor For Ultracab & Flat Top Models w/2 Piece Flat Windshields & Cab Mounted Mirrors, Blind Mount, Multi Fit Dropped Style, When Replacing Fiberglass Factory Visor Mounting Brackets Will Not Be Reused & Will Be Visible, Fits 2005-2007, Pictured Below



P/N 01-09003019

14.5" Stainless Drop Visor For Ultracab Models w/2 Piece Flat Windshields & Door Mounted Mirrors, 2 Piece, Straight Style, Blind Mount, Fits 1995-2005, Pictured Below



P/N 01-09003016

14.5" Stainless Drop Visor For Models w/2 Piece Flat Windshields & Cab Mounted Mirrors, Blind Mount, 2 Piece, Dropped Style, When Replacing Fiberglass Factory Visor Mounting Brackets Will Not Be Reused & Will Be Visible, Fits 2005-2007, Pictured Below



P/N 01-09013001

14.5" Stainless Bowtie Drop Visor For Flat Top Models w/2 Piece Flat Windshields & Cab Mounted Mirrors, 14.5" Sides & 7.5" Middle, 2 Piece, Blind Mount, Bowtie Style, Mounting Hardware & Brackets Included, Fits 2005-2007, Pictured Below



P/N 01-09003056

14.5" Paintable Stainless Drop Visor For Ultracab Models w/2 Piece Flat Windshields & Cab Mounted Mirrors, 2 Piece, Straight Style, Blind Mount, Sanded For Painting, When Replacing Fiberglass Factory Visor Mounting Brackets Will Not Be Reused & Will Be Visible, Fits 2005-2007, Pictured Below



WIPERS & RELATED

P/N 01-0911027

14" Black Enamel Painted Wiper Arm w/Washer Nozzle, For Driver Or Passenger Side, No Adapters Or Adjustments Needed For Installation, Replaces OE R23-6002, Fits 1987-2007, Pictured Below



*** High Quality Aftermarket Replacement Part (Not OEM Parts).

All items represented are aftermarket replacement parts. If you require OEM parts, please contact your nearest authorized Peterbilt dealer. Four State Trucks is not affiliated with Paccar or Peterbilt.

AFTERMARKET COLLISION PARTS



G CAB & RELATED (cont.) WIPERS & RELATED

P/N 29-091122

18" Premium Wiper Blade w/Universal Connector, All Heavy Gauge Metal w/Riveter Steel Frame, High Density Molded Rubber, Fits 1987-2007, Pictured Below



P/N 01-0911030

Wiper Nozzle Kit, Replaces OE 106.811, Fits 1987-2007

P/N 01-091100001

Windshield Wiper Motor, 5 Pin, Replaces OE E008109, E008205, Fits 1987-2007

P/N 01-0911034

8" x 3.5" Windshield Wiper Motor, 5 Pin, Replaces OE 18-03676, Fits 1987-2007

P/N 29-091128

Windshield Wiper Motor, 5 Pin, Replaces OE E005-554, Fits 1987-2007, Pictured Below



MIRRORS & RELATED

P/N 09-0915060

Stainless V-Back Style Mirror, 7" x 16", Heated, 1 Piece w/Rounded Corners, Gasket Cushions Edge Shock, Replaceable .125" Silvered Glass, .3125"-18 Plated Mounting Bolts & Locknuts Included, Replaces OE R23-6002, Fits 1987-2007, Pictured Below



P/N 09-0915006

7" x 16" Stainless Motorized & Heated Mirror, Full Vinyl Gasket, Includes Heating Element To Prevent Frost, .3125"-18 TPI Mounting Studs, Fits 1987-2007, Pictured Below



P/N 09-0915007

7" x 16" 403 Stainless Heated West Coast Style Mirror, Includes Mounting Hardware, Fits 1987-2007, Pictured Below



P/N 09-0915011

7" x 16" 403 Stainless West Coast Style Mirror, Includes Mounting Hardware, Fits 1987-2007, Pictured Below



P/N 09-0915003

8" Stainless Convex Spot Mirror w/Center Mounting Bracket, Fits 1987-2007, Pictured Below



P/N 09-0915004

8" Stainless Convex Spot Mirror w/Offset Mount, Fits 1987-2007, Pictured Below



P/N 09-0915005

7.5" Stainless Convex Spot Mirror w/Offset Mount, Fits 1987-2007, Pictured Below



P/N 01-091501

Stainless Outer Mirror Bracket For Door Mounted Mirrors, Replaces OE 18-02123, Fits 1987-2004, Pictured Below



P/N 01-0915010 (Left)

P/N 01-0915011 (Right)

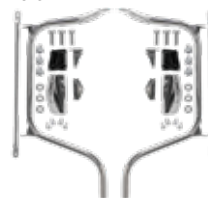
Mirror Bracket Yoke For Motto Mirror Plus, Replaces OE R18-6004, R18-6004R, Fits 1987-2007, Pictured Below



P/N 01-0915014 (Left)

P/N 01-0915015 (Right)

Cab Mirror Main Bracket Kit, Includes Main Mirror Bracket, Small Brackets To Mount Main Bracket & Brace, Lower Cover On Cab, Mounting Hardware Kit, Brace For Main Bracket, Mirror Hoop or Yoke & Mirror Heads Not Included, Fits 1987-2007, Pictured Below



AIR CLEANERS & RELATED

P/N 01-09051301

13" Stainless Donaldson Air Cleaner, 7" Intake, 28" Tall, Mounting Brackets Included, Filter Element Not Included, Fits 1987-2007, Pictured Below



P/N 09-090513001

13" Stainless Donaldson Air Cleaner, 7" Intake, 28.5" Tall, For Left Or Right Side, Filter Element Not Included, Fits 1987-2005, Pictured Below



P/N 29-09051301

13" Stainless Vortex Air Cleaner, 7" Outlet, Filter Element Not Included, Fits 1987-2007, Pictured Below



*** High Quality Aftermarket Replacement Part (Not OEM Parts).

All items represented are aftermarket replacement parts. If you require OEM parts, please contact your nearest authorized Peterbilt dealer. Four State Trucks is not affiliated with Paccar or Peterbilt.

AFTERMARKET COLLISION PARTS



G CAB & RELATED (cont.) AIR CLEANERS & RELATED

P/N 09-090515001

15" Stainless Vortex Air Cleaner, 33.625" Height, 7" Outlet, 4.75" Air Inlet Screen Height, No Visible Nuts Or Bolts On Exterior, Air Filter Cartridge Not Included, Fits 1987-2005, Pictured Below



P/N 29-09051500

15" Stainless Vortex Air Cleaner, 7" Outlet, Round Holes In Air Screen, Vortex Logo Bottom Edge Of Air Cleaner, Air Filter Cartridge Not Included, Fits 1987-2007, Pictured Below



P/N 29-090515002

15" 304 Stainless Vortex Air Cleaner w/2" Chopped Top, 31.625" Height, 7" Outlet, 2.75" Air Inlet Screen Height, Air Filter Cartridge Not Included, Fits 1987-2007, Pictured Below



P/N 29-090515003

15" 304 Stainless Vortex Air Cleaner w/Round Holes On Screen, Mounting Brackets & Straps Included, Air Filter Cartridge Not Included, Fits 1987-2007, Pictured Below



SEVERAL DIFFERENT AIR CLEANER PANELS AVAILABLE. CALL FOR MORE INFORMATION

P/N 29-090580

13" Stainless Air Cleaner Wrap For Oval Outlet, Fits 1987-1995, Pictured Below



P/N 01-09051300

13" Stainless Donaldson Air Cleaner Wrap For Round Pipe Outlet, Will Not Fit Oval Outlet, Fits 1987-2007, Pictured Below



P/N 29-090581

15" Stainless Air Cleaner Wrap w/Oval Hole, Fits 1987-1995, Pictured Below



P/N 01-09051501

15" Stainless Donaldson Air Cleaner Wrap w/Round Air Outlet, 17.75" Height, Fits 1987-2007, Pictured Below



P/N 29-0905700

15" Stainless Vortex Air Cleaner Filter Replacement, No Hole Drilled, Fits 1987-2007, Pictured Below



P/N 01-09050001

4" x 15" Stainless Vortex Air Cleaner Screen w/Oval Holes, Sold As Pair, Fits 1987-2007, Pictured Below



P/N 01-0905401

15" Stainless Air Cleaner Mounting Plate, Fits 1987-2007, Pictured Below



P/N 01-0905402

15" Stainless Air Cleaner Mounting Strap, 1.5" Wide, OEM Style, Fits 1987-2007, Pictured Below



P/N 01-0905400

2.5" x 15" Stainless Air Cleaner Mounting Strap, Sold As A Set Of 4, Fits 1987-2007, Pictured Below



P/N 01-0905405

2.5" x 15" Stainless Air Cleaner Mounting Strap, Fits 1987-2007, Pictured Below



P/N 29-090540

1.375" x 36.75" Rubber Strap Liner For Air Cleaner Mounting, Fits 1987-2007, Pictured Below



P/N 29-0905603

3.75" x 14" Stainless Air Cleaner Inlet Cap, 180 Degree Rain Shield, Fits 1987-2007, Pictured Below



CAB/COWL/SLEEPER PANELS



SEVERAL BLANK & LIGHTED PANELS AVAILABLE FOR 70", 63", 48" & 36" UNIBILT SLEEPERS. CALL FOR MORE INFORMATION.

DOOR ACCESSORIES

P/N 29-091402 (Left)

P/N 29-091403 (Right)

Exterior Door Handle, New Style, Replaces OE R56-1025, R56-1025R, Fits 2005-2007, Pictured Below



P/N 29-091401 (Left)

P/N 29-091421 (Right)

P/N 29-091400 (Pair)

Chrome Plated Plastic Exterior Door Handle Trim, Fits 2005-2007, Pictured Below



P/N 01-0914036

430 Stainless Door Latch & Key Hole Cover, Sold As Pair, Fits 2005-2007, Pictured Below



All items represented are aftermarket replacement parts. If you require OEM parts, please contact your nearest authorized Peterbilt dealer. Four State Trucks is not affiliated with Paccar or Peterbilt.

AFTERMARKET COLLISION PARTS



G CAB & RELATED (cont.) DOOR ACCESSORIES

P/N 01-0914038

Stainless Door Latch & Key Surround
w/Flames, Sold As Pair, Fits 2005-2007,
Pictured Below



P/N 01-0914037

304 Stainless Door Latch & Key Surround,
.625" Wide, Sold As Pair, Fits 2005-2007,
Pictured Below



P/N 01-0914078 (Left)

P/N 01-0914079 (Right)

Stainless Exterior Door Handle, Replaces
OE 20-08179L, 20-08179R, Fits 1987-2004,
Pictured Below



P/N 01-0914031

Stainless Rounded Top Door Latch &
Keyhole Trim For Paddle Style Door
Handles, Mounts w/Included Double Sided
Tape, Fits 1987-2004, Pictured Below



P/N 01-0914064

Stainless Flame Door Latch & Keyhole
Trim For Paddle Style Door Handles,
Mounts w/Included Double Sided Tape,
Sold As Pair, Fits 1987-2004,
Pictured Below



P/N 01-0914142

Exterior Door Handle Gasket, Adhesive
Back, Replaces OE 20-10967, Fits 1987-2007

P/N 01-0914087

Door Latch Striker Pin, Replaces OE
20-12972, Fits 1987-2000

P/N 01-0914101 (Left)

P/N 01-0914102 (Right)

Door Latch, Bear Claw, Replaces OE
20-08229L, D56002390, Fits 1987-2004

P/N 01-0914130 (Left)

P/N 01-0914131 (Right)

Polished Stainless Door Hinge, 25.625"
Length, Fits 1987-2007

P/N 01-0914050 (Left)

P/N 01-0914051 (Right)

Stainless Door Hinge, Does Not Have
Notch For Wire Boot, Taper On Holes For
The Door Side Of Hinge Are Smaller, Use
Smaller Screws Or Make Taper Larger,
Fits 1987-2007, Pictured Below



P/N 01-0914116

High Quality Door Seal, 13.5' Roll, Enough
For 1 Door, Fits 1987-2007, Pictured Below



P/N 01-0914144

High Quality Door Seal, 65.75", Replaces OE
20-15238, Fits 1987-2007, Pictured Below



P/N 01-153100002

Secondary Upper Cab Door Seal Door,
68.25", 3M Adhesive Back,, Replaces OE
20-15238, Fits 1987-2007, Pictured Below



P/N 01-101312

Stainless Upper Door Under Window Trim,
Tape Mount, Sold As Pair, Fits 1987-2005,
Pictured Below



P/N 01-0914041

Stainless Door Window Trim For Models
w/Straight Door & Cab Mounted Mirrors,
Sold As Pair, Fits 2005, Pictured Below



P/N 01-0914129

Stainless Under Door Scuff Panel, Sold As
Pair, Fits 1987-2007, Pictured Below



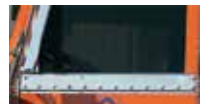
P/N 01-0914040

Stainless Upper Door Sill Trim For Models
w/Straight Door & Door Mounted Mirrors,
Sold As Pair, Fits 1987-2005, Pictured Below



P/N 01-0914042

Stainless Upper Door Sill Trim For Models
w/Angled Doors & Cab Mounted Mirrors,
Sold As Pair, Fits 2006-2007, Pictured Below



P/N 01-0914028

Stainless Top Door Trim For Models
w/Door Mounted Mirrors, 5", Panels Are
Sanded & Ready To Paint, Sold As Pair,
Fits 1987-2005



P/N 01-0914029

Stainless Polished Top Door Trim For
Models w/Cab Mounted Mirrors, 5", Sold
As Pair, Fits 1987-2005



P/N 01-0914127

Stainless Window Trim For Models
w/Door Mounted Mirrors, 5" Chopped
Style, Sold As Pair, Fits 1987-2005

P/N 01-0914134

304 Stainless Top Door Trim, 18 Gauge,
5", Sold As Pair, Fits 2005-2007,
Pictured Below



P/N 01-0914145 (4")

P/N 01-0914147 (5")

P/N 01-0914149 (6")

P/N 01-0914071 (7")

P/N 01-0914153 (8")

Smooth Aluminum Top Door Trim For
Models w/Cab Mounted Mirrors, Chopped
Style, Paintable, Sold As Pair,
Fits 2005-2007

P/N 01-0914146 (4")

P/N 01-0914148 (5")

P/N 01-0914150 (6")

P/N 01-0914072 (7")

P/N 01-0914154 (8")

Polished 304 Stainless Top Door Trim
For Models w/Cab Mounted Mirrors,
Chopped Style, Paintable, Sold As Pair,
Fits 2005-2007, Pictured Below



*** High Quality Aftermarket Replacement Part (Not OEM Parts).

All items represented are aftermarket replacement parts. If you require
OEM parts, please contact your nearest authorized Peterbilt dealer.
Four State Trucks is not affiliated with Paccar or Peterbilt.

PETERBILT 379

www.BestFitTruckParts.com
855-220-8608

AFTERMARKET COLLISION PARTS

Fits **PETERBILT 379**



G CAB & RELATED (cont.) DOOR ACCESSORIES

P/N 01-0914026

Stainless Top Door Trim For Models w/Cab Mounted Mirrors, 5", Panels Are Sanded & Ready To Paint, Sold As Pair, Fits 2005-2007, Pictured Below



P/N 01-0914027

Stainless Polished Top Door Trim For Models w/Cab Mounted Mirrors, 5", Sold As Pair, Fits 2005-2007, Pictured Below



P/N 01-0914002

Stainless Door Window Deflector, Convex Mirror Cutout on Passenger Side, Sold As Pair, Fits 2005-2007, Pictured Below



P/N 01-091400001

8.5" Top Of Door Trim To Match Post Mount Visor, Mounts With Adhesive Tape, Sold As Pair, Fits 2005-2007

P/N 01-0914054

Stainless Ventshade For New Style Doors, Requires Drilling 1 Small Hole Above Door Glass & Adhesive Tape For Mounting, Screws Included, Tape Not Included, Sold As Pair, Fits 2005-2007, Pictured Below



P/N 01-1530042

Door Check Kit, Helps Keep Door From Hitting Mirror & Air Cleaner, Sold As Kit, Fits 1987-2005, Pictured Below



P/N 01-1530023

Stainless Interior Upper Window Door Trim, Fits 1987-2007, Pictured Below



SLEEPER ACCESSORIES

P/N 01-101305

Stainless Unibilt Sleeper Door Latch, Fits 2005-2007

P/N 01-101310

Stainless Replacement Sleeper Storage Door Handle Trim, Fits 2005-2007

P/N 01-1014100115

Sleeper Bunk Door Handle, Fits 1987-2007, Pictured Below



P/N 01-101407 (Left)

P/N 01-101408 (Right)

Chrome Plated Steel Exterior Sleeper Door Handle, Does Not Include Lock Cylinder Or Mounting Hardware, Replaces OE 29-03610L, 29-03610R, Pictured Below



P/N 01-1017025 (Left)

P/N 01-1017014 (Right)

Aluminum Sleeper Front Corner Skin For Flat Top 36" Models, Same Thickness As OE, Pre-Drilled & Ready To Install, Replaces OE 29-02536, 29-02425, Fits 1994-2006, Pictured Below



P/N 01-1017018 (Left)

P/N 01-1017014 (Right)

Aluminum Sleeper Front Corner Skin For Flat Top 48" Models, Same Thickness As OE, Pre-Drilled & Ready To Install, Replaces OE 29-02429, 29-02425, Fits 1994-2006, Pictured Below



P/N 01-1017017 (Left)

P/N 01-1017014 (Right)

Aluminum Sleeper Front Corner Skin For Stand Up 48" Models, Same Thickness As OE, Pre-Drilled & Ready To Install, Replaces OE 29-02428, 29-02425, Fits 1994-2006

P/N 01-1017027 (Left)

P/N 01-1017029 (Right)

Aluminum Sleeper Front Corner Skin For Ultra 48" Models, Same Thickness As OE, Pre-Drilled & Ready To Install, Replaces OE 29-03302, 29-03418R, Fits 1994-2006

P/N 01-1017016 (Left)

P/N 01-1017014 (Right)

Aluminum Sleeper Front Corner Skin For Flat Top 63" Models, Same Thickness As OE, Pre-Drilled & Ready To Install, Replaces OE 29-02427, 29-02425, Fits 1994-2006

P/N 01-1017015 (Left)

P/N 01-1017014 (Right)

Aluminum Sleeper Front Corner Skin For Stand Up 63" Models, Same Thickness As OE, Pre-Drilled & Ready To Install, Replaces OE 29-02426, 29-02425, Fits 1994-2006

P/N 01-1017028 (Left)

P/N 01-1017029 (Right)

Aluminum Sleeper Front Corner Skin For Ultra 63" Models, Same Thickness As OE, Pre-Drilled & Ready To Install, Replaces OE 29-03304, 29-03418R, Fits 1994-2006

P/N 01-1017012 (Right)

Aluminum Sleeper Side Skin w/Baggage Door Opening For 36" Flat Top Models, Same Thickness As OE, Pre-Drilled & Ready To Install, Replaces OE 29-02370R, Fits 1994-2006, Pictured Below



P/N 01-1017021 (Right)

Aluminum Sleeper Side Skin w/Baggage Door Opening For 48" Flat Top Models, Same Thickness As OE, Pre-Drilled & Ready To Install, Replaces OE 29-02458, Fits 1994-2006

*** High Quality Aftermarket Replacement Part (Not OEM Parts).

All items represented are aftermarket replacement parts. If you require OEM parts, please contact your nearest authorized Peterbilt dealer. Four State Trucks is not affiliated with Paccar or Peterbilt.

www.BestFitTruckParts.com
855-220-8608

AFTERMARKET COLLISION PARTS



G CAB & RELATED (cont.) SLEEPER ACCESSORIES

P/N 01-1017013 (Right)

Aluminum Sleeper Side Skin w/Baggage Door Opening For 48" Ultra & Stand Up Unibilt Models, Same Thickness As OE, Pre-Drilled & Ready To Install, *Replaces OE 29-02422, Fits 1994-2006*

P/N 01-1017022 (Right)

Aluminum Sleeper Side Skin w/Baggage Door Opening For 63" Flat Top Models, Same Thickness As OE, Pre-Drilled & Ready To Install, *Replaces OE 29-02460, Fits 1994-2006*

P/N 01-1017023 (Right)

Aluminum Sleeper Side Skin w/Baggage Door Opening For 63" Flat Top & Stand Up Models, Same Thickness As OE, Pre-Drilled & Ready To Install, *Replaces OE 29-02461, Fits 1994-2006*

P/N 01-1017019 (Left)

P/N 01-1017020 (Right)

Aluminum Sleeper Rear Corner Skin For 48" & 63" Flat Top, Stand Up & Ultra Models, Same Thickness As OE, Pre-Drilled & Ready To Install, *Replaces OE 29-02430, 29-02431, Fits 1994-2006, Pictured Below*



P/N 01-1017024

Aluminum Sleeper Rear Wall Center Skin For 36", 48" & 63" Flat Top & 48" & 63" Ultra & Stand Up Models, Same Thickness As OE, Pre-Drilled & Ready To Install, *Replaces OE 29-02535, Fits 1994-2006, Pictured Below*



P/N 01-1017026

Aluminum Sleeper Rear Wall Center Skin w/Window Cutout For 36", 48" & 63" Flat Top & 48" & 63" Ultra & Stand Up Models, Same Thickness As OE, Pre-Drilled & Ready To Install, *Replaces OE 29-02537, Fits 1994-2006, Pictured Below*



FAIRINGS & RELATED

P/N 01-101430 (Left)

P/N 01-101431 (Right)

Fiberglass Sleeper Side Fairing For 63" Unibilt & High Roof Sleepers, Pre-Drilled Holes For Installation, *Replaces OE 29-04083L, 29-04083R, Fits 1994-2007, Pictured Below*



H FUEL TANKS & RELATED FUEL TANK ACCESSORIES

P/N 29-0601008 (Outer Lip)

P/N 29-0601009 (No Outer Lip)

4" Wide Rubber Fuel Tank Strap Liner, Insulates Between The Fuel Tank & Strap, *Sold By The Foot, Fits 1987-2007, Pictured Below*



P/N 01-060302

Fuel Tank Safety Vent, Anti-Spill Protection, .25" Barb Size I.D. Hose, 1.25" PTF SAE Short Thread Size, *Fits 1987-2007, Pictured Below*



P/N 09-060302

Fuel Tank Safety Vent, Anti-Spill Protection, .3125" Barb Size I.D. Hose, .5" PTF SAE Short Thread Size, *Fits 1987-2007, Pictured Below*



P/N 29-060302

Fuel Sender For 26" Diameter Tanks, *Replaces OE 11-03997-026, Fits 1987-2007, Pictured Below*



P/N 01-060305 (23" Diameter Tanks)

P/N 01-060304 (26" Diameter Tanks)

Fuel Sender OE Style Plug Gasket Included, *Replaces OE K21-6001-585, K21-6001-660, K21-6001-661, K-21-6004-661, 55491371526, Fits 1987-2007, Pictured Below*



P/N 29-060313

Adjustable 5-27" Fuel Sender, 240-33 OHM, *Fits 1987-2007, Pictured Below*



P/N 29-060314

.375" x 24" Brass & Copper Pick Up Tube, Cut To Tank Length, .5" Male Pipe Thread Into Fuel Tank, .375" Female Pipe Thread In Top, *Fits 1987-2007, Pictured Below*



P/N 29-060317

.5" x 28" Brass & Copper Pick Up Tube, Cut To Tank Length, .5" Male Pipe Thread Into Fuel Tank, .5" Female Pipe Thread In Top, *Fits 1987-2007*

P/N 01-060214

430 Stainless Rounded Edge Fuel Tank Fairing, 66" Long, *Replaces OE 29-02535, Fits 1994-2006, Pictured Below*



FUEL TANK CAPS

P/N 01-060301

P/N 01-060301K10 (Set of 10)

4" Non-Locking Lever Style Fuel Tank Cap, *Replaces OE 11-04859-100, Fits 1987-2007, Pictured Below*



P/N 01-060312

P/N 01-060312K10 (Set of 10)

4" Non-Vented Locking Lever Style Fuel Tank Cap w/Pressure Relief, *Fits 1987-2007, Pictured Below*



*** High Quality Aftermarket Replacement Part (Not OEM Parts).

All items represented are aftermarket replacement parts. If you require OEM parts, please contact your nearest authorized Peterbilt dealer. Four State Trucks is not affiliated with Paccar or Peterbilt.

AFTERMARKET COLLISION PARTS

Fits **PETERBILT 379**



H FUEL TANKS & RELATED (cont.) **FUEL TANK CAPS**

P/N 01-060309
Fuel Cap Gasket, *Fits 1987-2007, Pictured Below*



FUEL TANK BRACKETS & STRAPS

P/N 01-0601016 (23")
P/N 01-0601016K01 (23" Kit)
P/N 01-0601010 (26")
P/N 01-0601010K01 (26" Kit)
P/N 01-0601011 (Bracket Only)
4" Aluminum Fuel Tank Strap, Satin Finish, Will Fit Stock Tank Brackets, Strap Liner & Bracket Not Included, Kits Include 7' Liner For 1 Strap, *Replaces OE 11-03595, 11-03596, 471453C2, Fits 1987-2007, Pictured Below*



P/N 01-0601004K
4" Stainless Fuel Tank Strap Kit For 26" Diameter Tanks, Includes 2 Straps & 2 Bolts, Strap Liner Sold Separately, *Fits 1987-2007, Pictured Below*



P/N 01-0601000K
6" Stainless Fuel Tank Strap Kit For 26" Diameter Tanks, Includes 2 Straps & 2 T-Bolts, Strap Liner Sold Separately, *Fits 1990-2007, Pictured Below*



P/N 01-0601018
3.75" Woven Tank Strap Liner w/Adhesive Strip For 4" Wide Straps, .125" Thickness, *Replaces OE 11-02331-000, Sold By The Foot, Fits 1987-2007, Pictured Below*



P/N 01-0601020
3.75" x 7" Cotton Polyester Webbing Tank Strap Liner w/Adhesive Strip, .125" Thickness, Services 1 Strap & Bracket, *Replaces OE 11-02331-000-7, Fits 1987-2007, Pictured Below*



P/N 01-0601023
3.875" x 14' Cotton Polyester Webbing Tank Strap Liner w/Adhesive Strip, .125" Thickness, Services 2 Straps & Brackets, *Replaces OE 11-02331-000-7, Fits 1987-2007, Pictured Below*



FUEL TANKS **23" DIAMETER TANKS**

P/N 01-06008001 (Left)
P/N 01-06008002 (Right)
80 Gallon, 23" x 33" Aluminum Fuel Tank, Center Fill, 38" Overall Length, Filler Neck 16.5" From Rear Seam, 19" Above Horizontal Weld Seam, Original Manifold Style w/Sending Unit Hole 16.5" From Front Weld Seam, 13" Above Horizontal Weld Seam, Drain Or Cross Overs 16.5" From Front Weld Seam, Caps & Fittings Sold Separately, *Fits 1987-2006*

P/N 01-060010001 (Left)
P/N 01-060010002 (Right)
100 Gallon, 23" x 55" Aluminum Fuel Tank, 60" Overall Length, Rear Fill, Filler Neck 16.5" From Rear Seam, 19" Above Horizontal Weld Seam, Original Manifold Style w/Sending Unit Hole 16.5" From Front Weld Seam, 13" Above Horizontal Weld Seam, Drain Or Cross Overs 16.5" From Front Weld Seam, Caps & Fittings Sold Separately, *Fits 1987-2006*

P/N 01-060010000
100 Gallon, 23" x 55" Aluminum Fuel Tank, 60" Overall Length, Center Fill, Filler Neck 30" From Rear Seam, 16.5" Above Horizontal Weld Seam, Original Manifold Style w/Sending Unit Hole 30" From Rear Weld Seam, 11.5" Above Horizontal Weld Seam, Pickup & Return Ports 2.5" From Rear Weld Seam, 20.25" Below Horizontal Weld Seam, Drains Or Cross Overs 27.5" From Rear Weld Seam, 24.5" Below Horizontal Weld Seam, Caps & Fitting Sold Separately, *Fits 1987-2006*

P/N 01-060011001 (Left)
P/N 01-060011002 (Right)

110 Gallon, 23" x 57" Aluminum Fuel Tank, 62" Overall Length, Rear Fill, *Fits 1987-2006, Pictured Below*



P/N 01-060013510 (Left)
P/N 01-060013511 (Right)
135 Gallon, 23" x 72" Aluminum Fuel Tank, 77" Overall Length, Rear Fill, Filler Neck 4.5" From Rear Seam, 16.5" Above Horizontal Weld Seam, Original Manifold Style w/Sending Unit Hole 36" From Rear Weld Seam, 11.5" Above Horizontal Weld Seam, Drains Or Cross Overs 36" From Rear Weld Seam, 24.5" Below Horizontal Weld Seam, Caps & Fitting Sold Separately, *Fits 1987-2006*

P/N 01-060013514 (Left)
P/N 01-060013515 (Right)
135 Gallon, 23" x 72" Aluminum Fuel Tank, 77" Overall Length, Rear Fill, New Manifold Style, *Fits 2006-2007*

26" DIAMETER TANKS

P/N 01-06008003
80 Gallon, 26" x 33" Aluminum Fuel Tank, Center Fill, 38" Overall Length, Filler Neck 16.5" From Rear Seam, 19" Above Horizontal Weld Seam, New Manifold Style w/Sending Unit Hole 16.5" From Front Weld Seam, 13" Above Horizontal Weld Seam, Drain Or Cross Overs 16.5" From Front Weld Seam, Caps & Fittings Sold Separately, *Fits 2006-2007, Pictured Below*



P/N 01-06008004 (Left)
P/N 01-06008005 (Right)
80 Gallon, 26" x 33" Aluminum Fuel Tank, Rear Fill, 38" Overall Length, Filler Neck 18.5" From Rear Seam, 19" Above Horizontal Weld Seam, New Manifold Style w/Sending Unit Hole, 13.5" Above Horizontal Weld Seam, *Fits 2006-2007*

*** High Quality Aftermarket Replacement Part (Not OEM Parts).

All items represented are aftermarket replacement parts. If you require OEM parts, please contact your nearest authorized Peterbilt dealer. Four State Trucks is not affiliated with Paccar or Peterbilt.

www.BestFitTruckParts.com
855-220-8608

AFTERMARKET COLLISION PARTS



H FUEL TANKS & RELATED (cont.) **26" DIAMETER TANKS**

P/N 01-06009000 (Right)

90 Gallon, 26" x 36" Aluminum Fuel Tank, Center Fill, 41" Overall Length, Filler Neck 18" From Rear Seam, 19" Above Horizontal Weld Seam, Original Manifold Style w/Sending Unit Hole & Ports, 18" From Rear Weld Seam, 13" Above Horizontal Weld Seam, Drains Or Cross Overs 18" From Front Weld Seam, 28.5" Below Horizontal Weld Seam, Caps & Fittings Sold Separately, Fits 1987-2006, Pictured Below



P/N 01-060010003 (Left)

P/N 01-060010004 (Right)

100 Gallon, 26" x 43" Aluminum Fuel Tank, 48" Overall Length, Rear Fill, Filler Neck 16.5" From Rear Seam, 19" Above Horizontal Weld Seam, Original Manifold Style w/Sending Unit Hole 13" Above Horizontal Weld Seam, Fits 1987-2006, Pictured Below



P/N 01-060010005 (Left)

P/N 01-060010006 (Right)

100 Gallon, 26" x 43" Aluminum Fuel Tank, 48" Overall Length, Rear Fill, Filler Neck New Manifold Style, Built In Pickup Tubes, Fits 2006-2007

P/N 01-060010013 (Left)

P/N 01-060010014 (Right)

100 Gallon, 26" x 43" Aluminum Fuel Tank, 48" Overall Length, Center Fill, Filler Neck 24" From Rear Seam, 19" Above Horizontal Weld Seam, New Manifold Style w/Sending Unit Hole 24" From Rear Weld Seam, 13" Above Horizontal Weld Seam, Pickup & Return Ports 21.5" From Front Weld Seam, 22.5" Below Horizontal Weld Seam, Drains Or Cross Overs 21.5" From Front Weld Seam, 13" Below Horizontal Weld Seam, Caps & Fitting Sold Separately, Fits 2006-2006, Pictured Below



P/N 01-060011003 (Right)

100 Gallon, 26" x 48" Aluminum Fuel Tank, 53" Overall Length, Center Fill, Filler Neck 26.5" From Rear Seam, 19" Above Horizontal Weld Seam, Original Manifold Style w/Sending Unit Hole 26.5" From Rear Weld Seam, 13" Above Horizontal Weld Seam, Pickup & Return Ports 24" From Front Weld Seam, 22.5" Below Horizontal Weld Seam, Drains Or Cross Overs 24" From Front Weld Seam, 13" Below Horizontal Weld Seam, Caps & Fitting Sold Separately, Fits 1987-2006

P/N 01-060011007 (Left)

P/N 01-060011008 (Right)

110 Gallon, 26" x 48" Aluminum Fuel Tank, 53" Overall Length, Rear Fill, Peterbilt Style Neck, New Manifold Style w/Built In Pickup Tube, Fits 1987-2006

P/N 01-060011004 (Left)

P/N 01-060011005 (Right)

110 Gallon, 26" x 48" Aluminum Fuel Tank, 53" Overall Length, Rear Fill, Filler Neck 4.5" From Rear Seam, 19" Above Horizontal Weld Seam, Original Manifold Style w/Sending Unit Hole 24" From Rear Weld Seam, 13" Above Horizontal Weld Seam, Drains Or Cross Overs 24" From Front Weld Seam, 28.5" Below Horizontal Weld Seam, Caps & Fitting Sold Separately, Fits 1987-2006, Pictured Below



P/N 01-060011010 (Left)

P/N 01-060011011 (Right)

110 Gallon, 26" x 48" Aluminum Fuel Tank, 53" Overall Length, Rear Fill, Peterbilt Style Neck, New Manifold Style w/Built In Pickup Tube, Fits 2006-2007

P/N 01-060012501 (Left)

P/N 01-060012502 (Right)

125 Gallon, 26" x 52" Aluminum Fuel Tank, 57" Overall Length, Rear Fill, Original Manifold Style, Pickup Tube & Return Tube Sold Separately, Fits 1987-2006, Pictured Below



P/N 01-060012503 (Left)

P/N 01-060012504 (Right)

125 Gallon, 26" x 52" Aluminum Fuel Tank, 57" Overall Length, Rear Fill, New Manifold Style, Fits 1987-2006

P/N 01-060013501 (Left)

P/N 01-060013502 (Right)

135 Gallon, 26" x 65" Aluminum Fuel Tank, Original Manifold Style, Fits 1987-2006, Pictured Below



P/N 01-060015001 (Left)

P/N 01-060015002 (Right)

150 Gallon, 26" x 67" Aluminum Fuel Tank, 72" Overall Length, Rear Fill, Original Style Manifold, Fits 1987-2006, Pictured Below



P/N 01-060015007 (Left)

P/N 01-060015008 (Right)

150 Gallon, 26" x 67" Aluminum Fuel Tank, 72" Overall Length, Rear Fill, Filler Neck 4.5" From Rear Seam, 19" Below Horizontal Weld Seam, Peterbilt Style Manifold w/Sending Unit Hole 33.5" From Rear Weld Seam, 19" Below Horizontal Weld Seam, Fits 2006-2007, Pictured Below



P/N 01-060015009 (Left)

P/N 01-060015010 (Right)

150 Gallon, 23" x 82" Aluminum Fuel Tank, 87" Overall Length, Rear Fill, Filler Neck 4.5" From Rear Seam, 19" Above Horizontal Weld Seam, Original Manifold Style w/Sending Unit Hole 41" From Rear Weld Seam, 13" Below Horizontal Weld Seam, Drains Or Cross Overs 41" From Rear Weld Seam, 27.82" Below Horizontal Weld Seam, Caps & Fitting Sold Separately, Fits 1987-2006

FUEL TANK STEPS

P/N 3527 (33.5")

P/N 3520 (35.5")

Aluminum Heavy Duty Fuel Tank Step Assembly For 26" Diameter Fuel Tanks, Fits 1987-2007, Pictured Below



*** High Quality Aftermarket Replacement Part (Not OEM Parts).

All items represented are aftermarket replacement parts. If you require OEM parts, please contact your nearest authorized Peterbilt dealer. Four State Trucks is not affiliated with Paccar or Peterbilt.

AFTERMARKET COLLISION PARTS

Fits **PETERBILT 379**



I FENDERS

P/N 09-110306041

24" Stainless Steel Quarter Fender w/Tube, Mounts To Standard Post, Post Not Included, Sold As A Pair, Pictured Below



P/N 09-11030600

Stainless Steel Quarter Fenders w/Full Braces, 22" Height x 25" Wide, 13.5" From Bottom To Center Of Mount, Sold As A Pair, Pictured Below



More Rear Fenders Available, Please Call Us For More Information!

J FRAME & CHASSIS

P/N 01-051013

Wear Plate w/.625" Mounting For Air Trac Suspension, Fits 1987-2007, Pictured Below



P/N 65495

Monroe 65 Series Shock Absorber, Single Lip, Low Friction Oil Seal, Nitrogen Gas Charged, 2.375" Reserve Tube On Most Applications, 1.75" Bore, 2.6875" Piston Rod, Resistance & Arc Weld Mounts, Unique Hydraulic Lockout When Required, All Weather Fluid, 10-Stage Valving & Bonded Bushings On Most Applications, Replaces OE 665752, 665828, 671794, 85067, C71-1002, C7-6000, Fits 2003-2007, Pictured Below



P/N 01-050020

Shock Absorber For Air Leaf & Air Trac Suspensions, 1.625" Bore, 9.160" Stroke, 14.79" Collapsed Length, 23.95" Extended Length, Mounting Upper S21 Type Stud, Mounting Lower EB3 Eye Type, Replaces OE 85311, 5610Z1030, 5610Z2000, 680586, 650402, 65402, 654444, 74417, 03-04629, 03-07281, 03-07421, 03-07424, Fits 1987-2007, Pictured Below



P/N 29-050017

Shock Absorber For Low Air Leaf Suspension, 1.625" Bore, 10.34" Stroke, 15.940" Collapsed Length, 28.280" Extended, Mounting Upper S21 Stud Type, Mounting Lower S21 Stud Type, Replaces OE 85069, 661400, 665844, 66584440Y, 65468, C711011, 3-08781, 668526, 671091, Fits 2005-2007, Pictured Below



P/N 01-050000003

Steer Axle Shock For Air Ride Suspension, ES36 Upper & Lower Mounting, Dust Tube, Recoil Cutoff, 1.625" Bore, 10.09" Stroke, 16.29" Collapsed Length, 26.38" Extended Length, 633 Rebound Control, 119 Compression Control, Replaces OE 02-02142, 02-02740, 665658, Fits 1987-2007, Pictured Below



P/N 01-051023

Front Shock Bracket Bump Stop, Replaces OE 02-01155, 02-02904, D5000-2164, Fits 1987-2007, Pictured Below



P/N 01-051030

Aluminum Front Shock Bracket, Replaces OE 02-01782, 13003AA, B63-6000, Fits 1987-2007, Pictured Below



P/N 01-051027

Aluminum Shock Hanger For Air Trac Suspensions, Replaces OE C1-11126-C11-1126, Fits 1987-2007, Pictured Below



P/N 01-0509118

Threaded Shock Stud, .75-16@ 1.75" Thread, .375" Shoulder, .5"-13 @ 0.91" Threads w/0.748" Shaft, .541" Overall Length, Fits 1987-2007, Pictured Below



P/N 09-050904 (Left)

P/N 09-050905 (Right)

Tie Rod End, 1.125" Rod O.D., 12TPI Left Hand Thread Pitch & Direction, 6" Center To End, 2.221" Height of Taper, 0.967" Taper Minor Diameter, 1.107" Taper Major Diameter, 1.120" Taper Length, .875-14" Stud Thread, Replaces OE 128177, 817018, 970701, ETN817018, 4C403A130MA, 4C423A130MA, 60961027, 60961085, 65034001, 2505180C91, FTR3477, 84001015, R23140, ES3477, ES9001L, Fits 1992-2007, Pictured Below



P/N 01-0509112

2 Leaf Steer Axle Spring, 6500 lbs Capacity, Fits 1987-2004, Pictured Below



P/N 01-0509103

2 Leaf Steer Axle Spring, 4" Wide, 3 Pad, 25.5" x 27", Includes 2 RNK Bushings, 5400 lbs Capacity, Fits 1987-2004, Pictured Below



P/N 01-0511215K01 (Left)

P/N 01-0511216K01 (Right)

Front Single Leaf Z Spring, 3" Width, Long End 14.75", Short End 23.5", RB285, MR816 Bushing A End (S.E.), M8-3630 Bushing B End (L.E.), - 1.375 Arch, Replaces OE 03-08675L, 03-08675R, Fits 1993-2007, Pictured Below



P/N 01-0509117

Rear Spring 2 Leaf Z Spring, No Spring Eye, 3.5" Width, SS Arch, Replaces OE 03-07640, Fits 1995-2004, Pictured Below



P/N 01-051061K01 (Left)

P/N 01-051062K01 (Right)

Rear Single Leaf Z Spring, 3" Width, Long End 24.125", Short End 16", RB285, MR816 Bushing A End (S.E.), M8-3630 Bushing B End (L.E.), - 4.875 Arch, Replaces OE C81-6002, C81-6002R, Fits 1993-2007, Pictured Below



*** High Quality Aftermarket Replacement Part (Not OEM Parts).

All items represented are aftermarket replacement parts. If you require OEM parts, please contact your nearest authorized Peterbilt dealer. Four State Trucks is not affiliated with Paccar or Peterbilt.

www.BestFitTruckParts.com
855-220-8608

AFTERMARKET COLLISION PARTS



J FRAME & CHASSIS (cont.)

P/N 01-051052

2 Leaf Spring For Air Leaf Suspension, Hook On 2nd Half, 4" Width, Long End 24.75", Short End 4.375", HK-2 Bushing B End (L.E.), Replaces OE 03-03953, 03-04596, 03-07353, C81-6008, Fits 1993-2007, Pictured Below



P/N 01-051053

2 Leaf Spring For Air Trac Suspension, Hook On 2nd Half, 4" Width, Long End 24.75", Short End 4.375", HK-2 Bushing B End (L.E.), Replaces OE 02-02432, C81-6007, Fits 1987-2007, Pictured Below



P/N 29-050957

4" Spring Pin Double Lock, 8.859" w/Lock Notches 5.3125" Center To Center & 1.25" W Replaces OE 02-01767, 02-01781, K179-527, Fits 1987-2007

P/N 01-050957K01

Spring Pin Double Lock, 6.859" w/Lock Notches 5.313" Center To Center & 1.25" W Replaces OE 02-01767, 02-01781, Fits 1987-2007

P/N 01-051051 (Low Mount Air Leaf)

P/N 01-051043K01 (Flex Air & Air Trac)
Air Spring Stud, .5"-13 & .5"-20 x 6" Length, Replaces OE 27-00972, Fits 1995-2004

P/N 01-051054K01

Air Spring Stud For New Low Mount Air Leaf Suspension, .5"-13 x 8.04" Length, Replaces OE 27-01746, Fits 2005-2007

P/N 29-050912

Spring Bolt w/.75" Head, .5" x 6", Fits 1987-2007

P/N 01-051012

Spring Eye Bushing Kit For Air Leaf Suspension, Includes (1) Spring Eye Sleeve, (2) Compression Washers, (1) Lock Nut, (2) Spring Eye Bushings, (1) Spring Bolt, (2) Washers, Fits 1993-2007, Pictured Below



P/N 01-051017

4" Rear Spring Bushing Mount For Air Leaf Suspension, Replaces OE CS71459, 03-01654, Fits 1987-2007

P/N 01-051018

Rear Spring Bushing Mount For Air Leaf Suspension, Replaces OE CS70789, 03-05117, Fits 1994-2004

P/N 01-051019

Spring Bushing Kit For Low Air Leaf Suspension, Includes (1) Bushing, (1) Spring Eye Sleeve, (1) Spring Bushing Bolt, (1) Lock Nut, (2) End Bushing Washers, (2) Compression Washers, Replaces OE R307840, CQ70782B, 03-AL2, Fits 1994-2004

P/N 01-051020

Spring Bushing Kit For Air Leaf Suspension, Includes (1) Bushing, (1) Spring Eye Sleeve, (1) Spring Bushing Bolt, (1) Lock Nut, (2) End Bushing Washers, (2) Compression Washers, Replaces OE R304773, CQ71469B, 03-AL1, Fits 1987-2007

P/N 01-05100010

Spring Poly Bushing Kit For Low Mount Air Leaf Suspension, Includes (1) Lock Nut ST 1 In GR C, (1) Spring Bolt, (1) Torque Rod Poly Bushing, (1) Compression Washer, (1) Poly Eye Washer, (1) Sleeve Spring Eye, Fits 1987-2007

P/N 01-051000003

Poly Spring Bushing Kit, 9.5" x 4", Includes (1) Spring Eye Sleeve, (2) Compression Washer, (1) Lock Nut ST Inch GR C, (2) Torque Rod Poly Bushing (1) Spring Bolt, (2) Poly Eye Washer, Fits 1987-2007, Pictured Below



*** High Quality Aftermarket Replacement Part (Not OEM Parts).

All items represented are aftermarket replacement parts. If you require OEM parts, please contact your nearest authorized Peterbilt dealer. Four State Trucks is not affiliated with Paccar or Peterbilt.

P/N 01-050900014

4" Spring Front Shackle Kit, Includes (2) Shackle Side Bars, 1.125" Thickness, 1.25" Spring Pin Hole, .5" Lock Bolt Hole, (2) Nylon Sealed Bushings, 1.25" I.D., 1.5" O.D., 3.93" Overall Length, (4) Locking Nuts, (2) Grease Fitting, (4) Cap Screws, (2) Shackle Pins 1.25" Diameter, 6.859" Length, 5.313" Center To Center, Replaces OE K179527, 201767, 201781, Fits 1987-2007, Pictured Below



P/N 01-051034 (Left)

P/N 01-051035 (Right)

40K Cast Steel Air Spring Pedestal For Rear Air Leaf & Air Trac Suspension, Includes OEM Shock Stud, Fits 1987-2007

P/N 01-051036 (Left)

P/N 01-051037 (Right)

46K Cast Steel Air Spring Pedestal For Rear Air Leaf & Air Trac Suspension, Includes OEM Shock Stud, Fits 1987-2007, Pictured Below



P/N 01-0509100K01

Bi-Metal Spring Bushing, 1.5" x 1.25" x 4", Replaces OE 16-12399-001, 30057007, 10651H, Cs66658B, R301876, 61310207, Fits 1987-2007

P/N 01-051049

U Bolt Top Plate For Low Air Leaf Suspension, 3.455" x 9.125" x 2.36", Replaces OE 03-05380, 03-07677, Fits 1995-2004, Pictured Below



P/N 29-050962

Silent Block Spring Bushing & Pin, 1.75" O.D. Outer Shell, 4.063" Overall Length Outer Shell, 6.312" Center To Center Of Lock Notches, 7.5" Overall Pin Length, 1.063" Pin Diameter, Replaces OE 52256, 52272, B65-1006, Fits 1987-2007, Pictured Below



P/N 29-050963

Silent Block Spring Bushing & Pin, 1.75" O.D. Outer Shell, 4.063" Overall Length Outer Shell, 5.437" Center To Center Of Lock Notches, 6.688" Overall Pin Length, 1.063" Pin Diameter, Replaces OE 52375, B65-6005, Fits 1987-2007

P/N 01-05091202K01

Silent Block Spring Bushing & Pin, 2.077" O.D. Outer Shell, 7.5" Overall Length Outer Shell, 6.312" Center To Center, 1.063" Pin Diameter, Replaces OE 52757, B65-1007, Fits 1987-2007

P/N 01-050962K01

Silent Block Spring Bushing & Pin For M1813 Hanger, Bushing Type 1 Silent Block, Bushing Type 2 Bolt Type, Confinement Sleeve SRI RB295, 1.063" I.D., 1.75" O.D., 7.5" Overall Length, 4.063" Sleeve Length, 6.313" Lock Slot Length, Replaces OE 52757, B65-1007, Fits 1987-2007

AFTERMARKET COLLISION PARTS



J FRAME & CHASSIS (cont.)

P/N 01-050963K01
Silent Block Spring Bushing & Pin Bushing Type 1 Silent Block, Bushing Type 2 Bolt Type, Confinement Sleeve SRI RB328, 1.063" I.D., 1.75" O.D., 6.688" Overall Length, 4.063" Sleeve Length, 5.437" Lock Slot Length, *Replaces OE 52375 B65-6005, Fits 1987-2007*

P/N 01-051041K01
Silent Block Spring Bushing & Pin For Flex Air Suspensions, 2.36" O.D. Outer Shell, 5.625" Overall Length Outer Shell, 4.375" Center To Center, .625" Bolt Holes, *Replaces OE 51879, C13-6001, Fits 2002-2007, Pictured Below*



P/N 01-051042K01
Silent Block Spring Bushing For Flex Air Suspensions, .875" O.D. Outer Shell, 3" Overall Length Outer Shell, 2.375" Center To Center, .625" Bolt Holes, *Replaces OE 51880, 51880-000, C13-6002, Fits 2002-2007*

P/N 29-051020
Poly Spring Bushing & Pin, 2.5" O.D. Outer Shell, 5.672" Center To Center Bolt Holes, .813" I.D. Bolt Holes, *Replaces OE 16005092, 16-16412-001, 3538115C1, Fits 2005-2007*

P/N 01-0509102
Spring Hanger w/4" Spring, Rear Of Steer Axle, .625" Bolt Holes To Frame, *Replaces OE 02-1800M001, 3381230, 02-02311M001, Fits 1987-2007, Pictured Below*



P/N 01-0509104
Spring Hanger w/4" Spring, Rear Of Steer Axle, .75" Bolt Holes To Frame, *Replaces OE 02-1800M001, 3381230, 02-02311M001, Fits 1987-2007*

P/N 29-050964
Spring Hanger w/4" Spring, Rear Of Steer Axle, 1.25" Pin Diameter, Includes (1) TB-77 Bushing, 3.94" Center To Center Horizontal Frame Holes, 6" Center To Center Vertical Frame Holes, Frame Holes Have .625" Diameter, *Replaces OE B11-10345, Fits 1987-2007*

P/N 29-050965
Spring Hanger w/4" Spring, Rear Of Steer Axle, 1.25" Pin Diameter, Includes (1) RB328 Bushing & Pin-Silent Block, 3.94" Center To Center Horizontal Frame Holes, 6" Center To Center Vertical Frame Holes, Frame Holes Have .625" Diameter, *Replaces OE B11-10346*

P/N 01-0509113
Cast Spring Hanger Rear Of Front Drive Axle, 4", 6" Bolt Height, 3.94" Side Holes Center To Center, 6.25" Top To Side Hole Center To Center, Bi-Metal Bushing, 1.5" Height, 4" Length, 1.25" Diameter, *Replaces OE 02-02311M001, Fits 1987-2007*

P/N 01-0509115
Spring Hanger Assembly For Steer Spring, *Replaces OE B11-1034-8, Fits 1987-2007*

P/N 29-050971
Aluminum Spring Hanger For Rear Of Front Steer, 4" Spring, 6.25 Bolt Height, *Replaces OE 02-02311M001, Fits 1987-2007*

P/N 01-05091210K01
Aluminum Shackle Hanger, *Replaces OE B11-10345, Fits 1987-2007*

P/N 01-05091211K01
Steel Shackle Hanger, *Replaces OE B11-10347, Fits 1987-2007*

P/N 01-05091212K01
Aluminum Shackle Hanger, *Replaces OE B11-1033, Fits 1987-2007*

P/N 01-05091213K01
Steel Shackle Hanger, *Replaces OE 100112579, B11-1034, B11-10341, Fits 1987-2007*

P/N 01-05091214K01
Aluminum Shackle Hanger, *Replaces OE B11-10341, Fits 1987-2007*

P/N 01-051029
Aluminum Front Spring Hanger, 6" Bolt Height, *Replaces OE B11-10342, Fits 1987-2007*

P/N 01-0509115K01
Cast Aluminum Rear Of Front Spring Hanger, Includes Silent Block 5.4375" Pin Center To Center, *Replaces OE B11-1034-8, Fits 1987-2007*

P/N 01-050964K01
Cast Aluminum Rear Of Front Shackle Hanger, Includes Silent Block 5.4375" Pin Center To Center, *Replaces OE MTB178, Fits 1987-2007*

P/N 01-050965K01
Cast Aluminum Rear Of Front Shackle Hanger, Includes Silent Block 5.4375" Pin Center To Center, *Replaces OE MR902, Fits 1987-2007*

P/N 01-050971K01
Aluminum Rear Of Front Steer Spring Hanger, 4" Spring, 6.25" Bolt Height, *Replaces OE 02-02311M001, Fits 1987-2007*

P/N 01-051039
Leaf Spring Hanger Front Of Rear For Air Trac Suspensions, Includes Wear Pad Kit, *Replaces OE 01-44406, 01-48280M002, Fits 1987-1993*

P/N 01-051032
Cast Steel Rear Air Leaf Hanger, *Replaces OE 03-06794, 03-06794M001, 03-07328, 03-07328M001, Fits 1993-2007, Pictured Below*



P/N 01-0509110
Spring Hanger Front Of Rear Drive Axle For Air Leaf Suspensions, *Replaces OE CS71490, M1642, PEGH, Fits 1993-2007, Pictured Below*



P/N 01-051040
Leaf Spring Hanger Front Of Rear For Air Trac Suspensions, Use With Wear Pad Kit, .4375" Flange Thickness, *Replaces OE 01-42590M004, 01-48280M004, Fits 1993-2007, Pictured Below*



P/N 01-051043
Steel Spring Hanger Front Of Rear For Low Mount Air Leaf Suspension, 3.93" Center To Center, 31.43", .645", 2.623", .5", 3.79", *Replaces OE 01-46785M001, 01-49563M001, Fits 1993-2007, Pictured Below*



P/N 01-051051K01
Aluminum Front Of Rear Suspension Hanger For New Low Air Leaf, *Replaces OE 01-52743, C11-1124, Fits 2005-2007, Pictured Below*



P/N 01-051052K01
Aluminum Front Of Rear Suspension Hanger For New Low Air Leaf, *Replaces OE C11-6089, Fits 2005-2007, Pictured Below*



*** High Quality Aftermarket Replacement Part (Not OEM Parts).

All items represented are aftermarket replacement parts. If you require OEM parts, please contact your nearest authorized Peterbilt dealer. Four State Trucks is not affiliated with Paccar or Peterbilt.

AFTERMARKET COLLISION PARTS



J FRAME & CHASSIS (cont.)

P/N 01-051038K01 (Left)
P/N 01-051039K01 (Right)
Aluminum C Spring Hanger, *Replaces OE C11-6001L, C11-6022L, C11-6001R, C11-6022R, Fits 2002-2007, Pictured Below*



P/N 01-051040K01
Single Leaf C Spring, 2 Spring Eye (S.E./L.E.) REV/REV, 4", S.E. Bushing End RB291-r, MR828, L.E. Bushing End RB292-r, MR830, Arch 7125", *Replaces OE C81-6001, C81-6001A, Fits 2002-2007, Pictured Below*



P/N 01-0509116K01
Nylon Sealed Front Axle Spring & Bushing, Includes Bushing 1.25" I.D., 1.5" O.D., 3.93" Overall Length, *Replaces OE 02-01805, Fits 1987-2007*

P/N 01-0509116
Nylon Sealed Front Axle Spring, Includes Bushing 1.25" I.D., 1.25" O.D., *Replaces OE 02-01805, Fits 1987-2007, Pictured Below*



P/N 01-050905 (Black)
P/N 01-050906 (Red)
Front Axle Bump Stop, *Replaces OE 02-02904, Fits 1987-2007, Pictured Below*



P/N 01-05091200K01
Spring Pin Threaded Bushing w/6 Threads, 1.75" x 1.375", 4" Overall Length, *Replaces OE 5295, 52991, Fits 1987-2007, Pictured Below*



P/N 01-05091201K01
Spring Pin Threaded Bushing w/4 Threads, 2.078" x 1.319", 4" Overall Length, *Replaces OE B13-1002, Fits 1987-2007*

P/N 01-05091203K01
Threaded Spring Pin, 5.75" x 1.375", 7.375" Overall Length, *Replaces OE 6262, 02-01713, Fits 1987-2007, Pictured Below*



P/N 01-05091204K01
Threaded Spring Pin, 1.063" x 1.319", 6.9685" Overall Length, *Replaces OE B65-6008, Fits 1987-2007*

P/N 01-05091205K01
Spring Pin Threaded Bushing w/4 Threads, 1.062" x 1.319", 7.87" Overall Length, *Replaces OE B65-1008, Fits 1987-2007, Pictured Below*



P/N 01-051031
Front Spring Spacer, 1" High, No Wedge, 5.5" Wide, 4.825" Length, *Replaces OE 02-01823-025, Fits 1987-2007, Pictured Below*



P/N 01-051058K01
Bumper Stop For New Low Air Leaf Suspensions, Mounts To Frame, *Replaces OE 01-52865, Fits 2005-2007, Pictured Below*



P/N 01-0510111K01
Rubber Bushing w/Steel Casing & Pin For Rear Spring Air Ride, Bushing Type Silent Block, Bushing Type Straddle Lip, Confinement Sleeve, SRI RB2680s, 2.563" O.D., 7.406" Overall Length, 3.25" Bushing Sleeve Length, .810" Bolt I.D., 5.688" Center To Center, *Fits 1993-2007, Pictured Below*



P/N 01-051020K01
Poly Bushing w/Steel Casing & Pin For Rear Spring Air Ride, Bushing Type Silent Block, Bushing Type Straddle Lip, Confinement Sleeve, SRI RB2680s, 2.563" O.D., 7.406" Overall Length, 3.25" Bushing Sleeve Length, .810" Bolt I.D., 5.688" Center To Center, *Fits 1993-2007*

P/N 01-051023K01
Poly Bushing w/Steel Casing & Pin, Premium Bushing, Bushing Type 2 Straddle Lip, SRI RB164, 2.531" O.D., 5.75" Overall Length, 2.625" Bushing Sleeve Length, .625" Bolt I.D., 4.375" Center To Center, *Replaces OE 44694000, Fits 1987-2007*

*** High Quality Aftermarket Replacement Part (Not OEM Parts).

All items represented are aftermarket replacement parts. If you require OEM parts, please contact your nearest authorized Peterbilt dealer. Four State Trucks is not affiliated with Paccar or Peterbilt.

P/N 01-051000001
Spring Roller Kit For Air Trac Suspension Hanger, Kit Includes Lock Nut, Roller Bushing, .625" U Bolt Washer, .625" Lock Nut & Roller Spring, *Fits 1987-2007, Pictured Below*



P/N 01-051044
Adjustment Shim For Low Mount Air Leaf Suspensions, 1.75" Center To Center, .0625" Thickness, *Replaces OE 03-05114-001, Fits 1995-2004, Pictured Below*



P/N 01-051045
Adjustment Shim For Low Mount Air Leaf Suspensions, 1.75" Center To Center, .09375" Thickness, *Replaces OE 03-05114-002, Fits 1995-2004*

P/N 01-051100002 (.625")
P/N 01-051100004 (.125")
Steel Thrust Angle Shim For Air Leaf Suspensions, *Sold As Set Of 10, Fits 1993-2007, Pictured Below*



P/N 01-0509100K02
4" x 6" Aluminum Shim Wedge, Type 1, 4 Degree, *Fits 1987-2007*

P/N 01-050900001 (0.5 Degree)
P/N 01-050900002 (1.0 Degree)
P/N 01-050900003 (1.5 Degree)
P/N 01-050900004 (2.0 Degree)
P/N 01-050900005 (2.5 Degree)
P/N 01-050900006 (3.0 Degree)
P/N 01-050900007 (3.5 Degree)
P/N 01-050900008 (4.0 Degree)
Heavy Duty Aluminum Alloy Shims, 4" Width, 6.5" Spring Pad Length, Need To Spread the Load to Prevent Shim From Crushing If Using Z Blocks Or Other Axles Spacers, *Sold As Set Of 6, Fits 1987-2007, Pictured Below*



P/N 01-051046
Long Coarse 11 Thread Eye Casting Hex Bolt, .625" Diameter, 5" Length, Pitch Coarse, Grade 8, *Replaces OE 27-00283-020, D84001660, D84006636, Fits 1995-2004*

P/N 01-05100911
Air Bag For Low Air Leaf Suspensions, Air Supply Is Separate From Mounting Studs, *Replaces OE 03-06213, 03-07111, Fits 1987-2004*

P/N 29-051011
Air Bag Replacement For 12 Gauge Gen III Air Ride Systems, *Fits 1987-2007*

P/N 01-051000
Air Bag For Air Leaf & Air Trac Suspensions, *Replaces OE 03-01649, 03-02038, 03-02456, 03-04759, 03-06747, 03-07112, 03-10042, Fits 1987-2007, Pictured Below*



AFTERMARKET COLLISION PARTS



J FRAME & CHASSIS (cont.)

P/N 29-051014

Air Bag For Flex Air, AG380 & Airglide Suspensions, *Replaces OE C81-1003, C81-1012, C81-6000, W01-358-8813, Fits 2003-2007*

P/N 01-051014K01

Air Bag For Flex Air Suspensions, Rolling Lobe, Load @ 80PSI 5710, Load @ 100 PSI 7160, 11.5" Design Height, Plastic Bottom Plate, 9" Top Plate Diameter, 6.2" Top Plate Center To Center, Parallel Bottom Plate, Bottom Plate Diameter 9.53", Bottom Plate Center To Center 2.25", Bumper, *Replaces OE W01-358-8813, Fits 2003-2007, Pictured Below*



P/N 01-051032K01

Rear Drive Air Bag For New Style Low Air Leaf Suspensions, Rolling Lobe, Load @ 80 PSI 5640, Load @ 100 PSI 7070, 16" Design Height, Plastic Bottom Plate, 9" Top Plate Diameter, 6.2" Top Plate Center To Center, Parallel Bottom Plate, Bottom Plate 7.88" Diameter, Bottom Plate 2.25" Center To Center, Bumper, No Bracket, *Replaces OE C81-1013, Fits 2005-2007, Pictured Below*



P/N 29-0510012

Air Bag For New Style Low Air Leaf Suspensions, Rolling Lobe, Load @ 80PSI 5640, Load @ 100 PSI 7070, 15" Design Height, Plastic Bottom Plate, 9" Top Plate Diameter, 6.2" Top Plate Center To Center, Parallel Bottom Plate, *Replaces OE 03-07887, Fits 2005-2007, Pictured Below*



P/N 01-051014

Torque Rod For Air Leaf & Air Trac Suspensions, 22.875" Center To Center, Bolt Spacing 4.375" Center To Center, Bolt Holes .625" Diameter, *Replaces OE R304771, 03-02439, 03-04059, Fits 1987-2007, Pictured Below*



P/N 01-05095000

Drag Link, 14.210" Center To Center, 1.378" Diameter Bar, 14.5" End To End, 1.125" - 12 Passenger Side Shaft Thread, 1.080" Diameter Taper Pin Minor, 1.25" Diameter Taper Pin Major, 1.36" Taper Pin Length, .0875" - 14 Taper Pin Thread, Male, *Replaces OE 10-02131, 10-02163A, 10-02498, DS1179, L24VU8000F11K, J20-6005, Fits 1987-2007, Pictured Below*



P/N 01-051015

Sealed Forged Torque Rod For Air Leaf & Air Trac Suspensions, 22.810" Center To Center, Bolt Spacing 4.375" Center To Center, Bolt Holes .625" Diameter, Non Replaceable Bushings-Sealed Type, *Replaces OE R304771, 03-02439, 03-04059, Fits 1987-2007*

P/N 01-051022

Sealed Torque Rod For Low Air Trac Suspensions, 17.34" Center To Center, Bolt Spacing 4.375" Center To Center, 1 End Bolt Holes .625" Diameter At 0 Degrees, 1 End .75" Diameter At 10 Degrees, Non Replaceable Bushings - Sealed Type, *Replaces OE R305083, CS70744, 03-04327, Fits 1987-2007*

P/N 01-051000002

Forged Torque Rod For 4 Spring Tandem Older Style Glide Ride Models, Fixed Rod, 1.25" Shaft, 19.25" Overall Length, Includes TMRB192500 Torque Rod & TRB6820 End Bushings, *Replaces OE 03-01764, 03-01781, 03-04839, 1AA53, Fits 1987-1991*

P/N 01-051000004

Torque Arm Bolt Assembly Kit For Air Trac Spring Hangers, 4.375" Center To Center Bolt Holes, Includes (1) Torque Arm, (2) Compression Washers, (2) Torque Rod Bushings & (1) Lock Nut, *Fits 1987-2007, Pictured Below*



P/N 01-051029K01

Poly Torque Rod Bushing For Rear Air Trac Suspensions, 2.75" O.D. Outer Shell, 4.375" Center To Center, .625" I.D. Bolt Holes, *Fits 1987-2007*

P/N 29-051023

Poly Torque Rod Bushing For Air Leaf, Low Air Leaf & Air Trac Suspensions, 2.5" O.D. Outer Shell, 2.625" Outer Shell Length, 4.375" Center To Center Bolt Holes, .625" I.D. Bolt Holes, 5.75" Overall Length, *Replaces OE 151087148, 1693060C1, 350330088, 35033201, 446694000L, 8079894, RB164, Fits 1987-2007, Pictured Below*



P/N 29-0510014

Torque Arm Bushing, 4.375" Center To Center Bolt Holes, *Replaces OE 44694, 44694000, 4694-000L, 1693060C1, 350330088, 35033201, 8079894, Fits 1987-2007*

P/N 01-051046K01

Torque Rod Shim, 4.375" Center To Center, .063" Thickness, *Replaces OE 147457, 49689, 8020329, Fits 1987-2007, Pictured Below*



P/N 01-051021

Sealed Torque Rod For Low Air Leaf Air Suspensions, 25.78" Center To Center, Bolt Spacing 4.375" Center To Center, Bolt Holes .625" Diameter, Non Replaceable Bushings - Sealed Type, *Replaces OE R307853, 5550343, 03-05108, Fits 1994-2004*

P/N 01-051044K01

Torque Rod For Flex Air Suspensions, 23.75" Center To Center, *Replaces OE C65-6000-001, C65-6011-001, Fits 2002-2007*

P/N 01-051045K01

Torque Rod For Flex Air Suspensions, 24.625" Center To Center, *Replaces OE C65-6000-002, C65-6011-002, Fits 2002-2007*

P/N 01-051050K01

Torque Rod Shim For Flex Air & New Low Air Leaf Suspensions, 5.688" Center To Center, .0625" Thickness, *Fits 2002-2007, Pictured Below*



P/N 01-0510013K01

Torque Rod Bushing, 1.872", 4.375" Center To Center, .640", *Replaces OE 47961, 47691000, 47691000L, A1611944800, ES275, 322-123, Fits 2002-2007, Pictured Below*



P/N 01-0510014K01

Torque Rod Bushing, 4.375" Center To Center, *Replaces OE 44694, 44694000, 4694-000KL, 1693060C1, 350330088, 35033201, 8079894, Fits 2002-2007, Pictured Below*



P/N 01-051048K01

Torque Rod Shim For Flex Air & New Low Air Leaf Suspensions, 5.688" Center To Center, .03125" Thickness, *Fits 2002-2007, Pictured Below*



*** High Quality Aftermarket Replacement Part (Not OEM Parts).

All items represented are aftermarket replacement parts. If you require OEM parts, please contact your nearest authorized Peterbilt dealer. Four State Trucks is not affiliated with Paccar or Peterbilt.

AFTERMARKET COLLISION PARTS



J FRAME & CHASSIS (cont.)

P/N 01-051049K01

Torque Rod Shim For Flex Air & New Low Air Leaf Suspensions, 5.688" Center To Center, .125" Thickness, Fits 2002-2007

P/N 29-051012

Torque Rod For Flex Air Suspensions, 25.53", Replaces OE C65-6013-000006-49, TR030020010, Fits 2003-2007, Pictured Below



P/N 01-051012K01

Torque Arm, Non Rebrushable Ends, 1.25" Shaft Diameter, Straddle Style, 0 Degree Angle, 25.46" Center To Center, Replaces OE 44694, 44694000, 4694-000L, 1693060C1, 350330088, 35033201, 8078994, Fits 2003-2007

P/N 01-050909

Spring Shackle Side Bar For Rear Of Steer Axle, 3.5" Center To Center Pin Holes, 6" Overall Length, For 1.125" Diameter Pins & 4" Springs, Replaces OE 02-01783, 02-01784, Fits 1987-2007, Pictured Below



P/N 01-05091206K01

Side Bar, 6.375" Overall Length, 2" Wide, 1.063" Pin Hole, 4" Center To Center, 1.25" Thickness, Replaces OE B20-6006, Fits 1987-2007, Pictured Below



P/N 01-05091207K01

Side Bar, 6.375" Overall Length, 2" Wide, 1.063" Pin Hole, 4" Center To Center, 1.25" Thickness, Replaces OE B20-6007, Fits 1987-2007, Pictured Below



P/N 01-05091208K01

Side Bar, 6.32" Overall Length, 1.9" Wide, 1" Pin Hole, 4" Center To Center, 1.262" Thickness, Replaces OE B20-6006, Fits 1987-2007, Pictured Below



P/N 01-05091209K01

Side Bar, 6.32" Overall Length, 1.9" Wide, 1" Pin Hole, 4" Center To Center, 1.262" Thickness, Replaces OE B20-6006, Fits 1987-2007, Pictured Below



P/N 29-050925

U-Bolt Kit, 8" x 4", Nuts & Washers Included, Fits 1987-2007, Pictured Below



P/N 01-051016

U-Bolt Kit For Air Leaf & Air Trac Suspensions, 1" Diameter Bolt, 4" Inside Measurement, 16" U-Bolt Length, Includes 2 U-Bolt Washers w/Nuts, Sold As Pair, Fits 1987-2007, Pictured Below



P/N 29-050966

U-Bolt Kit For Air Leaf & Air Trac Suspensions, .75" Diameter Bolt, 4" Inside Measurement, 10.25" U-Bolt Length, Includes 2 U-Bolt Washers w/Nuts, Sold As Pair, Replaces OE 15983092, 15983095, 15983097, 453895C1, 465916C1, 465916C91, 02-01375-100, Fits 1987-2007, Pictured Below



P/N 01-050961K01

Square U-Bolt Kit, .75" Diameter, 4" Width, 8.875" Length, Grade 8, Replaces OE 680-322-07-25, K241-309, Sold As Kit, Fits 1987-2007

P/N 01-050966K01

Square U-Bolt Kit, .75" Diameter, 4" Width, 10.25" Length, Grade 8, Replaces OE 15983092, 15983095, 15983097, 453895C1, 465916C1, 465916C91, 201375100, 02-01375-100, Sold As Kit, Fits 1987-2007

P/N 01-051041

U-Bolt Saddle For Air Leaf & Air Trac Suspensions, 6.75" x 3.875" x 8.375", Replaces OE 03-01656, 03-01656G, 03-1656B, 03-1656D, Fits 1987-2007, Pictured Below



P/N 01-051042

U-Bolt Saddle For Air Trac Suspensions, 8.375" Overall Length, 4" Wide, 7" Center To Center, Replaces OE C63-6001, Fits 1987-2007

P/N 01-051033

Square U-Bolt Kit For Air Leaf Suspensions, .75" x 4" x 6.75", Includes (2) U-Bolts, (4) .75" Washers & (4) .75" Deep Nuts, Fits 1993-2007

P/N 01-051038

U-Bolt Saddle For Rear Air Leaf Suspension, Cast Eye, Replaces OE 03-1657, 03-07865, Fits 1993-2007, Pictured Below



P/N 01-051047

U-Bolt Saddle, 3.5" x 3.625", Replaces OE 03-05100, 03-07678, Fits 1995-2004

P/N 01-051048

Square U-Bolt Kit For Low Air Leaf Suspension, .75" Diameter, 3.5" Width, 5.125" Length, Grade 8, Replaces OE 03-00425, 03-00581, 03-05105, Fits 1995-2004, Pictured Below



P/N 01-051050

Semi-Round U-Bolt Kit For Low Air Leaf Suspension, 1" Diameter, 3.5" Width, 15.5" Length, Grade 8, Replaces OE 03-05110-155, Fits 1995-2004

P/N 01-051047K01

U-Bolt Kit For Flex Air Suspensions, .875" x 5.125" x 13.5", Fits 2002-2007, Pictured Below



P/N 01-051055K01

Round U-Bolt Kit For New Low Air Leaf Suspensions, 8.66" x 3.307" x 14.7", Replaces OE 03-08693-365, Sold As Kit, Fits 2005-2007

P/N 01-051053K01

U-Bolt Saddle For New Low Air Leaf Suspensions, 8.125" Overall Length, 6.625" Center To Center, Replaces OE 03-08712, Fits 2002-2007

P/N 09-05110001

Jost 5th Wheel Slick Plate Kit, Lose The Grease, Make Life Cleaner, Replaces OE JSK37F & JSK37U, Fits 2002-2007

P/N 09-05110212

Jost Forged Aluminum Holland 5th Wheel w/Low Lube Technology, No Lube Coated Lock Components, Replaceable Plate Inserts, Forged, Machined, Heat-Treated Steel Lock Jaw, Automatic Secondary Lock, Closed Load Drop Handle, Replaces OE XA-AL-A-L-P, XAALALP, Fits 2002-2007, Pictured Below



*** High Quality Aftermarket Replacement Part (Not OEM Parts).

All items represented are aftermarket replacement parts. If you require OEM parts, please contact your nearest authorized Peterbilt dealer. Four State Trucks is not affiliated with Paccar or Peterbilt.

AFTERMARKET COLLISION PARTS

Fits **PETERBILT 379**



J FRAME & CHASSIS (cont.)

P/N 09-05110002

Just 5th Wheel Slick Plate, 31.5" High x 35" Wide w/13" Throat For JSK37H Model, Non-Stick Polymer Surface Eliminates The Need To Grease The 5th Wheel Plate, Plate Protects The Top Of The Fifth Wheel Plate From Wear And Tear, Kit Comes Complete w/Pre-Drilled Ultra Composite Plates, Ram Bars & All Necessary Mounting Hardware, Fitment Depends On The Dimensions Of Your 5th Wheel, So Make Sure To Measure Correctly Before Ordering To Ensure Correct Fitment *Replaces OE JSK37H, Fits 2008-2018, Pictured Below*



P/N 09-051100015

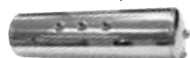
Air Cylinder For Just 5th Wheel, *Replaces OE SK7501503, Fits 1987-2007, Pictured Below*



More 5th Wheel Options Available, Please Call Us For More Information!

P/N 01-051405 (9.5" x 33.5")

P/N 01-051406 (8" x 30")
Polished Aluminum Air Tank, 150 PSI, .5" Thread Ports In Center, .5" Thread Point In Center Of Each End, .25" Threaded Port On Perimeter Each End, *Pictured Below*



P/N 01-051410

Stainless Air Tank Mounting U-Bolt, 2.64" Of Thread, 11.125" Overall Height, .280" Diameter, 24" Overall Length Thread To Thread, 9.5" Width Thread To Thread, *Replaces OE G34-6009, Fits 1987-2007*

P/N 01-051411

Stainless Air Tank Mounting U-Bolt, 8" Width Thread To Thread, *Fits 1987-2007*

P/N 29-051401

Stainless Air Tank U-Bolt For 10" Air Tank, Includes Washers & Lock Nuts, 11.25" Overall Height, 10" Between Sides, .3125" Diameter, .3125"-24 Thread Size, 3" Thread Length, *Replaces OE G34-6006, K241-576, Fits 1987-2007*

P/N 29-051030

Height Control Valve, Integral Pressure NC Dump, High Flow, Short Delay, Dual Suspension Ports, .375" PTC, Includes 2 Levers & 1 Linkage Kit, *Fits 1987-2007, Pictured Below*



P/N 01-051001K01

Leveling Valve, Controlled Response CR HCV w/1 Suspension Port, .125 NPT, Valve Only, CR Type w/o Dump, .25" Fittings, *Replaces OE 10464, 121288B, 22040570, 5549705, 90054007, 90554928, K295-4171, R304323, WC13583599, Fits 1987-2007, Pictured Below*



P/N 01-051800K01

Leveling Valve, Adjustable Linkage Kit For Height Control Valve, 18" Rod w/Ends & Hardware, 19.5" Maximum Usable Length, Ends Can Be Cut For Shorter Applications, *Replaces OE 03-05180, 03-06224, 12149, 3178678, 3317122, 48100224, 48100225, 9HB824, A2153, M306538, R307852, R309625, SRK167, SRK168, 2505186C91, 3524252C1, Fits 1987-2007, Pictured Below*



P/N 29-051803

Suspension Leveling Valve For Air Ride Suspensions, *Replaces OE HV9990, Fits 1999-2007*

P/N 01-051056K01

Leveling Kit Valve For New Low Air Leaf Suspensions, HVC Kit, Non-Delay, .25" NPT, 2 Supply Ports, Includes Short Lever To Mount .25" Arm, Centering Pin, Mounting Bracket & Hardware, Lever Arm, P Link Connector, Exhaust T, *Fits 2005-2007, Pictured Below*



P/N 01-051057K01

Leveling Kit For New Low Leaf Suspensions, 3.625"-19.625" Adjustable, *Fits 2005-2007*

P/N 01-0519000

Aluminum Rear Crossmember, 33.5" Overall Length, 4.5" Height, 90 Degree Bend Bottom Angle, 110 Degree Bend Upper Angle, 30.5" Center To Center Bolt Holes, *Replaces OE 01-45151M000, Fits April 1992-2007, Pictured Below*



P/N 01-0519001

Steel Rear Crossmember, 33.5" Overall Length, 4.5" Height, 90 Degree Bend Bottom Angle, 110 Degree Bend Upper Angle, 30.5" Center To Center Bolt Holes, *Replaces OE 01-47400M000, Fits April 1992-2007*

P/N 01-05010031 (Left)

P/N 01-05020031 (Right)
Aftermarket Aluminum Battery Box, Old/OE Style Replacement, *Fits 1988-2004, Pictured Below*



P/N 01-05022001 (24")

P/N 01-05022000 (31")
Aftermarket Aluminum Battery Box, Diamond Plate New Style Step & Smooth Sides, *Fits 2005-2007, Pictured Below*



P/N 01-05010231

30"L x 30"W x 15.5"H Aluminum Battery Box, Diamond Plate Old School Style, Diamond Plate Aluminum Lid & Step, Smooth Aluminum Sides Come Unfinished, Aluminum Sides Can Be Painted Or Polished, Stainless T-Latch Handles, *Fits 2005-2007, Pictured Below*



*** High Quality Aftermarket Replacement Part (Not OEM Parts).

All items represented are aftermarket replacement parts. If you require OEM parts, please contact your nearest authorized Peterbilt dealer. Four State Trucks is not affiliated with Paccar or Peterbilt.

www.BestFitTruckParts.com
855-220-8608

AFTERMARKET COLLISION PARTS



J FRAME & CHASSIS (cont.)

P/N 01-05020024

24.5" L x 30" W x 15" H Smooth & Diamond Plate Aluminum Battery Box, Old/OE Style, Fits 1987-2007, Pictured Below



P/N 01-05012000

31" Diamond Plate Aluminum Battery Box, Smooth Aluminum Sides, Old/OE Style, New Style Step, Fits 2001-2007, Pictured Below



P/N 01-05012002

31" Diamond Plate Aluminum Battery Box Replacement Lid, Smooth Aluminum Sides, OEM Style w/New Style Step, Fits 2001-2007, Pictured Below



P/N 01-05012001

Diamond Plate Aluminum Battery Box Replacement Lid w/Old Style Grip Step, Square Corners, Rubber Latches, Replaces OE 01-05010031, Fits 1987-2007, Pictured Below



P/N 01-051502

Painted Steel Black Mounting Brackets For Battery Boxes & Tool Boxes, Sold As A Pair, Fits 1987-2007, Pictured Below



P/N 01-050133

29.5" L x 7" W x 2" H Aluminum Battery/Tool Box Lower Replacement Step, Old Style Tread Design, Bolts Where Original Step Was Welded, Fits 1987-2007, Pictured Below



P/N 01-0505001

Aluminum Lower Step w/New Style Tread, 29.5" Length, 7" Width, 2" Height, Fits 2005-2007, Pictured Below



P/N 01-050134

30.5" L x 7" W x 2" H Aluminum Battery/Tool Box Lower Replacement Step w/Angles, Bolt To Front & Rear Of Box For Use On Boxes That Have The Step Mounting Ears Broken & Cannot Be Reused, Fits 1987-2007, Pictured Below



P/N 01-0505002

30.5" L x 7" W x 2" H Aluminum Lower Step w/Mounting Angles 17" From Step, Later Style Tread, Fits 2005-2007, Pictured Below



P/N 01-0507006OE

16" x 14" Logo Front Fender Rear Mud Flap, Replaces OE 1157BK, MF0003, OEM Part Not An Aftermarket Part, Pictured Below



P/N 01-0507007OE

24" x 18" Logo Mud Flap For Battery/Tool Box, Replaces OE 1160B, Fits 1967-1987, OEM Part Not An Aftermarket Part, Pictured Below



P/N 01-0507008OE

24" x 14" Logo Mud Flap For Battery/Tool Box, Replaces OE 1163B, MF0001, Fits 1967-1987, OEM Part Not An Aftermarket Part, Pictured Below



P/N 01-0507005OE

Top Quarter Fender Mud Flap, Replaces OE 1025R, MF0005, Fits 1988-2004, OEM Part Not An Aftermarket Part, Pictured Below



Parts Offered Through Our Original Parts Program Are Original Equipment Manufacturer (OEM) Parts & Not Aftermarket Parts. The OPP Allows Customers To Purchase OEM Parts From 4 State Trucks. We Purchase OEM Parts From Authorized Dealers & Then Resell Them To Our Customers. 4 State Trucks Is Not Associated Or Affiliated With Any OEM Dealer or Paccar. Peterbilt® Is A Registered Trademark Owned By Paccar.

K

WHEELS & RELATED

P/N 09-2015221 (22.5", 2 Hand Holes)

P/N 09-2015242 (24.5", 5 Hand Holes)

Hub Pilot White Powder-Coated Steel Wheel w/Hand Holes, 10 Hole Wheel, Can Be Used As Steer Or Drive Axle Wheel, 70 lbs, Fits 2008-2018, Pictured Below



P/N 09-20132231 (22.5")

P/N 09-20132431 (24.5")

Hub Pilot Accuride Accu-Lite Aluminum Wheel, New Ultra-Enhanced Finish, Polished Both Sides, Can Be Used As Steer Or Drive Axle Wheel, 45 lbs, Fits 2008-2018, Pictured Below



*** High Quality Aftermarket Replacement Part (Not OEM Parts).

All items represented are aftermarket replacement parts. If you require OEM parts, please contact your nearest authorized Peterbilt dealer. Four State Trucks is not affiliated with Paccar or Peterbilt.

AFTERMARKET COLLISION PARTS



L EXHAUST PARTS

P/N 01-0800003
Black Poly Exhaust Mount Grommets,
Sold As Set Of 4, Fits 1987-2007

P/N 01-0807035
Poly Exhaust Mount Grommets w/Steel
Sleeve, Sold As Set Of 8, Fits 1987-2007

P/N 01-080704
Poly Exhaust Mount Grommets w/Steel
Sleeve & E-Clip, Replaces OE 14-14656,
Fits 1987-2007

P/N 01-08194560
5" Steel Lower Elbow Below Turbo Pipe,
90 Degree, Replaces OE 14-09456,
Fits 1987-2007, Pictured Below



P/N 01-08134330
5" Stainless Lower Elbow Below Turbo
Pipe, 90 Degree, Replaces OE 14-13433,
Fits 1987-2007

P/N 01-08133950
5" Stainless Lower Elbow Below Turbo
Pipe, 75 Degree, Replaces OE 14-13395,
Fits 1987-2007, Pictured Below



P/N 01-08142560
Turbo Pipe w/Hole For Pyrometer Probe,
68 Degree Bend, Replaces OE 14-14256,
Fits 1987-2007, Pictured Below



P/N 01-0801006
Aluminized Steel Turbo Pipe, 5" Flanged
Inlet, 5" O.D. Outlet, Replaces OE 14-15329,
Fits 1987-2007

P/N 01-08130561
5" x 15" Chrome Plated Steel Elbow, 58
Degree Bend, Replaces OE 14-13056C,
Fits 1987-2007, Pictured Below



P/N 01-08138250
Aluminized Aluminum Multi-Bend Turbo
Pipe, 5" Flanged Inlet, 5" O.D. Outlet,
Replaces OE 14-13825, Fits 1987-2007

P/N 01-08013409
Aluminized Steel Turbo Extension Pipe
For High Mount Above Frame Exhaust,
5" Inlet, 5" O.D. Outlet, Single 20 Degree
Bend, Replaces OE 14-13409, Fits 1987-2007,
Pictured Below



P/N 01-08138450 (Left)
P/N 01-08138451 (Right)
Chrome Plated Steel Exhaust Elbow, 7.91"W
x 8.15"H a 22.39" Depth, Replaces OE
14-13845LC, 14-13845RC, Fits 1987-2007,
Pictured Below



P/N 01-080700004 (Left)
P/N 01-080700005 (Right)
Chrome Multi-Bend Elbow w/Seams
Between Bends For Bottom Of Muffler,
7.91"W x 8.15"H x 22.39" Depth, Replaces OE
14-13845CP, 14PB-L13845CP, Fits 1987-2007,
Pictured Below



P/N 01-080104600
5" x 18" Intermediate Pipe, Connects To
Driver Side Elbow Of Exhaust Tee,
Replaces OE 14-13940-0460, Fits 1978-2007,
Pictured Below



P/N 01-0801003
Aluminized Steel Exhaust Down Pipe,
Replaces OE 14-14194, Fits 1994-2000,
Pictured Below



P/N 01-0806139780
Exhaust Tee For Daycab Models w/Behind
The Cab Mounted Muffler, Replaces OE
14-13978-0150, Fits 1987-2007, Pictured Below



P/N 29-080801
Stainless Exhaust Shield w/Vertical Slot
Cutouts For 10" Diameter Mufflers, 48"
Overall Length, 180 Degree Coverage, Half
Wrap Style, Includes Mounting Clamps,
Fits 1987-2007, Pictured Below



P/N 01-08409240
Aluminized Exhaust Shield Mounting
Clamp For 5" O.D. Pipe, Replaces OE
14-00924, Fits 1987-2007

P/N 29-080003
V Band Clamp For 5.88" Flanged Pipes To
DPF, Replaces OE VQ10588A01, 90-0013,
21021850, 11ME378M, VB588C, P206007,
35806, Fits 2007

P/N 29-080402
DPF Flex Connector, 4" Flange x 4" Flange
x 11.375" Compressed, Replaces OE
M66-6541-0320, M66-7091-0320, Fits 2007

P/N 29-080405
DPF Flex Connector, 4" Flange x 4" Flange
x 11.375" Compressed, Replaces OE
M66-6542-0320, Fits 2007

P/N 29-080403
DPF Flex Connector, 4" Flange x 4" Flange
x 12.25" Compressed, Replaces OE
M66-6541-0335, M66-7091-0335, Fits 2007

P/N 29-080407
DPF Flex Connector, 4" Flange x 4" Flange
x 12.75" Compressed, Replaces OE
M66-6559, Fits 2007

P/N 29-080404
DPF Flex Connector, 4" Flange x 4" Flange
x 14.25" Compressed, Replaces OE
M66-6541-0405, M66-7091-0435, Fits 2007

P/N 29-080406
DPF Flex Connector, 4" Flange x 4" Flange
x 14.5" Compressed, Replaces OE
M66-6542-0335, M66-6132-0320, Fits 2007

P/N 29-0809004
DPF Filter For Cummins ISX Engines,
Replaces OE 1827739PEX, 2871578,
2871578NX, Fits 2007, Pictured Below



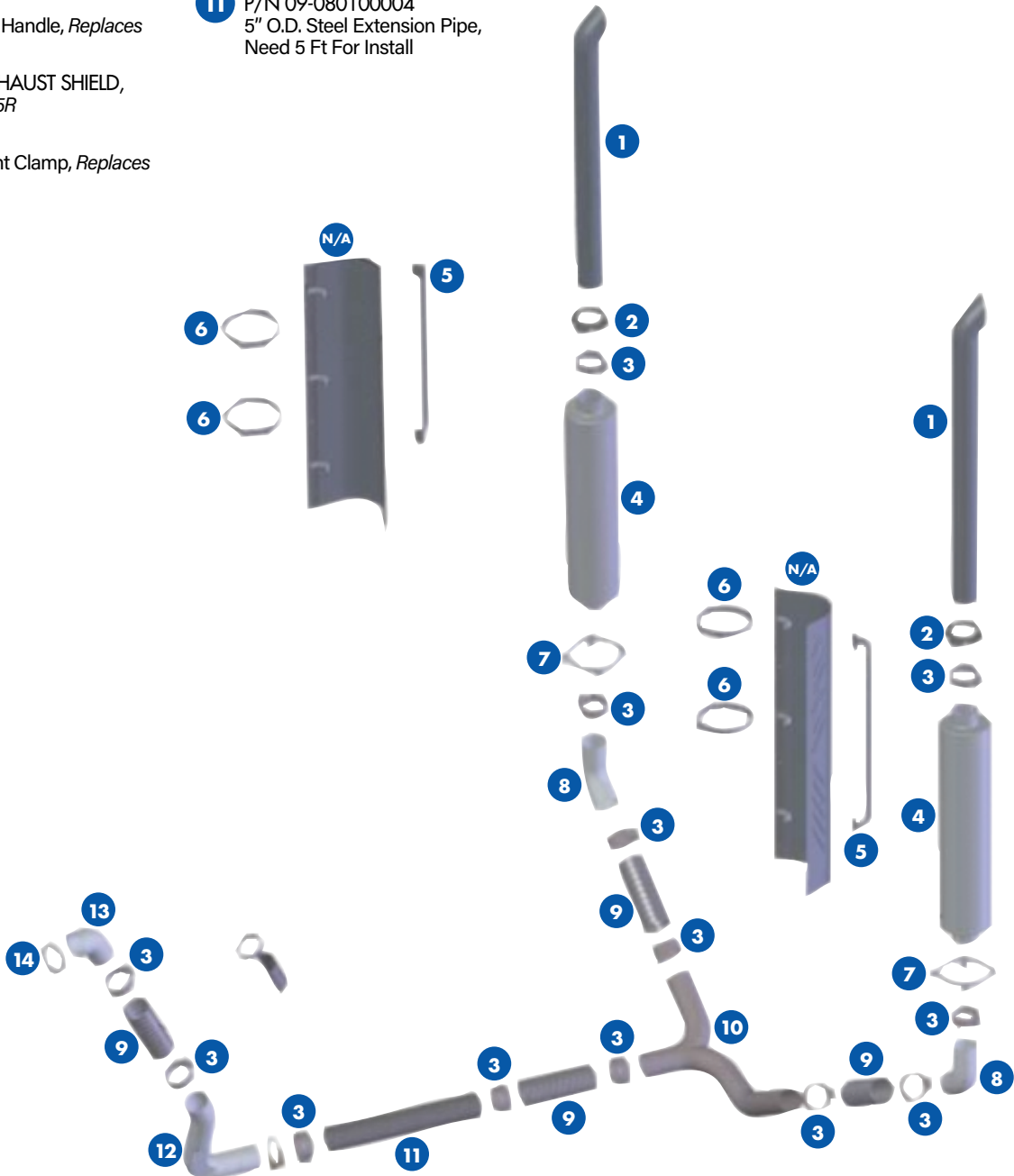
*** High Quality Aftermarket Replacement Part (Not OEM Parts).

All items represented are aftermarket replacement parts. If you require OEM parts, please contact your nearest authorized Peterbilt dealer. Four State Trucks is not affiliated with Paccar or Peterbilt.

AFTERMARKET COLLISION PARTS

EXHAUST PARTS FOR PETERBILT 378 & PETERBILT 379, 2 MUFFLERS ON CAB EXHAUST

- 1 P/N 09-08506007
5" O.D. x 60" Turnout Chrome Top Stack, Other Styles Available
- 2 P/N 01-08446620
5" Upper Exhaust Mount Clamp, Replaces OE 14-14622
- 3 P/N 09-0800009
5" Stainless Steel Flat Band Clamp
P/N 09-0800010
5" Stainless Steel Preformed Band Clamp
- 4 P/N 29-080200
5" I.D. x 10" Dia. Muffler, Replaces OE 04-21774-001
- 5 P/N 01-08446910
Exhaust Shield Grab Handle, Replaces OE 14-14691
- N/A STAINLESS STEEL EXHAUST SHIELD, Replaces OE 14-14785R
- 6 P/N 01-0808014
Exhaust Shield Mount Clamp, Replaces OE 14-14695
- 7 P/N 01-0808015 (Left)
P/N 01-0808016 (Right)
Exhaust Shield Lower Mount Clamp, Replaces OE 14-14696L, 14-14696R
- 8 P/N 01-0813056
Chrome Exhaust Elbow BOM, Replaces OE 14-13056C
- 9 P/N 09-0804524
5" x 24" Stainless Steel Flex Pipe
- 10 P/N 01-0806001
5" O.D. Y-Pipe, Replaces OE 14-15353-0150
P/N 01-0806000
5" O.D. Y-Pipe, Replaces OE 14-13055
- 11 P/N 09-080100004
5" O.D. Steel Extension Pipe, Need 5 Ft For Install
- 12 P/N 01-08150730
Lower Turbo Down Pipe Elbow, Replaces OE 14-15073
P/N 01-08133940
Lower Turbo Down Pipe Elbow, Replaces OE 14-13394
- 13 P/N 01-08130020
Turbo Pipe w/Pyro Hole, Replaces OE 14-13002
P/N 01-08134300
Turbo Pipe, Replaces OE 14-13430
- 14 P/N 29-080001
5" Turbo V-Band Clamp



*** High Quality Aftermarket Replacement Part (Not OEM Parts).

All items represented are aftermarket replacement parts. If you require OEM parts, please contact your nearest authorized Peterbilt dealer. Four State Trucks is not affiliated with Paccar or Peterbilt.

Fit PETERBILT 378/379

www.BestFitTruckParts.com
855-220-8608