

# AFTERMARKET COLLISION PARTS



## A BUMPERS

P/N FE001002  
16" Chrome Bumper w/Tow Holes,  
Standard, Fits 1982-2010, Pictured Below



P/N FT021002  
16" Chrome Bumper w/Tow Holes & Center  
Step Cut Out, Standard, Fits W900B  
2011-2019 Only

P/N FT021006  
18" Chrome Texas Square Rolled End  
Bumper w/Tow Holes & Center Step Cut  
Out, Fits W900B 2011-2019 Only,  
Pictured Below



P/N FE001006  
18" Chrome Texas Square Rolled End  
Bumper w/Tow Holes, Fits W900B  
1983-2010 & W900L 1990-Current

P/N FE0010060  
18" Chrome Texas Square Economy  
Bumper w/Tow Holes & No Backing  
Plates, Fits W900B 1983-2010 & W900L  
1990-Current

P/N FE021006  
18" Chrome Texas Square Rolled End  
Bumper w/Tow Holes & Center Step Cut  
Out, Fits W900 B 1983-2010 & W900L  
1990-Current

P/N FE221006  
18" Chrome Texas Square Rolled End  
Bumper w/Tow Holes, Center Step Cut  
Out & Square Fog Light Cut Outs, Fits  
W900 B 1983-2010 & W900L 2010-Current,  
Pictured Below



## B HEADLIGHTS & TURN SIGNALS

P/N 09-1606000 (Left)  
P/N 09-1606002 (Right)  
Dual Square Headlight Assembly w/Bezel,  
Replaces OE K256-880-4, K256-880-4R,  
Pictured Below



P/N 09-1606077  
Headlight Bezel, Replaces OE K307-30

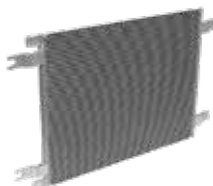
P/N 02-160716101  
Amber Turn Signal, 2 Stud Fender Mount,  
Replaces OE K256-D-324, Pictured Below



P/N 02-160711000  
Double Face Amber Turn Signal, 2 Stud  
Fender Mount, Includes Long Harness  
w/OE Style Plug, Replaces OE K256-554,  
Fits 2007-2014

## C ENGINE COOLING PARTS AC CONDENSERS

P/N 02-070015  
AC Condenser, 20" Width, 26" Height,  
Replaces OE N4783001, M3655002,  
Fits 2007-2010, Pictured Below



P/N 02-070000  
AC Condenser, Radiator Mounted, 20"  
Width, 28.25" Height, .875" Thick,  
Replaces OE K122-125, N83306575,  
Fits 1995-2000, Pictured Below



\*\*\* High Quality Aftermarket Replacement Part (Not OEM Parts).

All items represented are aftermarket replacement parts. If you require OEM parts, please contact your nearest authorized Kenworth dealer. Four State Trucks is not affiliated with Paccar or Kenworth.

## CHARGE AIR COOLERS

P/N 02-070112  
Charge Air Cooler, For C-15 CAT, Replaces  
OE K093-63B, IE3520, Fits 1989-1992,  
Pictured Below



P/N 29-070105  
Charge Air Cooler, Replaces OE N4404001,  
N8787001, Fits 2008-2014, Pictured Below



## PTR RADIATORS

P/N 02-070223  
Plastic Aluminum Radiator w/o Outer  
Frame Work, For ISX Cummins, Replaces  
OE N4020001, Check OE For Proper  
Application, Fits 2008-2011, Other  
Applications Available, Pictured Below



P/N 29-070210  
Radiator w/High Efficiency Cooling,  
39.375" Width, 43" Height, 2" Thick, 2.5"  
I.D., 2.5" O.D. Replaces OE N9414001, Check  
OE For Proper Application, Fits 2008-2011,  
Pictured Below



## METAL RADIATOR

P/N 02-070204  
Radiator w/Outer Framework, 28" Width,  
40" Height, 2.5" I.D., 3" O.D., Replaces OE  
6500-10BT, IE621325, Pictured Below



# AFTERMARKET COLLISION PARTS



## C ENGINE COOLING PARTS (cont.) RADIATOR ACCESSORIES

P/N 02-070225

Radiator Support Bushings, Contains 2 Bushing Halves & 1 Sleeve, Need 2 Per Truck, Mount In The Cross Member, Replaces OE M500-70NR, K066-177, Pictured Below



P/N 02-070226

Radiator Support Rod Bushing, 1 Per Package, Need 4 Per Truck, Replaces OE K264-84

## FAN SHROUDS

P/N 02-070601

Aftermarket Fiberglass Fan Shroud, Replaces OE K2126-2041, Fits 1995-2001, Pictured Below



P/N 02-070602

Aftermarket Fiberglass Fan Shroud, Replaces OE K2126-2043, Fits 1992-2002

## COOLANT RESERVOIRS

P/N 29-070203

Coolant Reservoir, For Cummins Or Cat Engines w/Behr Cooling Module, Replaces OE N5346001, Fits 2008-2013, Pictured Below



P/N 29-070205

Coolant Reservoir Cap w/Nipple, Replaces OE N5348001, Fits 2008-2013, Pictured Below



## ENGINE PARTS

P/N 02-070700

Washer Reservoir, Replaces OE K114-20, Fits 1999-2002, Pictured Below



P/N 29-070700

Washer Reservoir Cap, Replaces OE C5720S, Fits 1999-2002

P/N 29-071694153

Flywheel Housing, Replaces OE 2234739, 304156, Fits CAT C15

P/N 29-073680063

Flywheel Housing, Replaces OE 3412303, 4026795, Fits Cummins ISX

P/N 29-0723522643

Flywheel Housing, Replaces OE 23522643, Fits Detroit 60

P/N 29-0723505073

Flywheel Housing, Replaces OE 23505073, 23505124, Fits Detroit 60

P/N 09-071601428

Oil Pan, Replaces OE 1601428, 2263004, 2273006, Fits CAT C15, Pictured Below



P/N 29-074952540

Oil Pan, Replaces OE 3680530, 3680531, Fits Cummins ISX

P/N 29-0711001

EGR Valve, Replaces OE 3104874, 3682805, 3682954, 3682974, 3683305, 3683446, 3684004, 7955422, 4955422NX, 4955422RX, Fits ISX Gen 1 Cummins 2003-2007, Pictured Below



P/N 29-0711002

EGR Cooler HD Gasket, Replaces OE 2881474, 2881474NX, 2881784, 2881784NX, 3684448, 4309248, 4309248NX, 4309248, 4309248NX, 4309398, 4955467, 4955926, Fits ISX Gen 2 Cummins 2007-2010

P/N 29-0711009

EGR Cooler HD Gasket Kit, Fits ISX Cummins 15 Liter 2003-2007, Pictured Below



## D HOODS & RELATED

P/N 02-12503

Aftermarket Fiberglass Hood Shell, For Curved Windshield, Metton Only, Replaces OE L29-1018, Fits 2002-2012, Pictured Below



P/N 02-12502

Aftermarket Fiberglass Hood Shell, For Curved Windshield, Will Not Replace Metton Hood, Replaces OE K146-1325, Fits 1994-2001, Pictured Below



P/N 02-12555

Aftermarket Fiberglass Hood Shell, For W900B, 61.25" Front To Back On Top, Replaces OE K146-1092, K146-1254, Fits 1998-2012, Pictured Below



P/N 02-12566

Aftermarket Fiberglass Hood Shell, For W900L w/Flat Glass, 70.75" Front To Back On Top, Replaces OE K146-1135, K146-1138, Fits 1998-2012, Pictured Below



\*\*\* High Quality Aftermarket Replacement Part (Not OEM Parts).

All items represented are aftermarket replacement parts. If you require OEM parts, please contact your nearest authorized Kenworth dealer. Four State Trucks is not affiliated with Paccar or Kenworth.

Fit KENWORTH W900B/L

www.BestFitTruckParts.com  
855-220-8608



# AFTERMARKET COLLISION PARTS



## D HOODS & RELATED (cont.)

P/N 02-124009  
White Hood Spring, For Fiberglass Hood,  
Replaces OE L71-1002, Fits 1999-2011

P/N 02-124010  
Brown Hood Spring, For Metton Hood,  
Replaces OE L71-1004, RF126000325,  
Fits 1999-2012

P/N 02-124016  
Blue Hood Spring, Replaces OE K224-86

P/N 02-124014  
Red Hood Spring, Replaces OE K224-81,  
Fits 1988-2006

P/N 02-124017  
Black Hood Spring, Replaces OE K224-35,  
Fits 1988-2006

P/N 02-124004  
Hood Cone Support Bushing, Need 2 Per  
Truck, Replaces OE K179-450,  
Pictured Below



P/N 02-124003  
Hood Hinge Bushing, Contains 2  
Bushings & 1 Sleeve, Need 4 Per Truck,  
Replaces OE M300-70NR, Pictured Below



P/N 02-124005  
Hood Support Post Bracket, Replaces OE  
K179C375, Fits W900B 1986-2014 &  
W900L 1990-2014, Pictured Below



P/N 02-124007  
Hood Roller, 1.125" O.D., .625" I.D., 1.5"  
Length, Replaces OE K066-360,  
Pictured Below



P/N 29-124000  
Hood Latch Kit, Need 2 Kits Per Truck,  
Replaces OE L56-0001, Fits 1997-2007,  
Pictured Below



## GRILLE GUARD

P/N 02-0130015  
High Quality Grille Guard, Aluminum Post,  
3" Trim, Skirt, 1 Center Support, Fits W900L  
1990-Current, W900L Aerocab 1994-Current



## E CAB & RELATED AIR CLEANERS

P/N 09-090513001  
13" Aftermarket Stainless Steel Air Cleaner  
w/4 Bolt Top, 7" I.D., Uses AF25247 Filter  
Element, Filter Element Not Included,  
Replaces OE K077-313POL, Pictured Below



P/N 09-090515001  
15" Aftermarket Stainless Steel Vortex Style  
Air Cleaner w/Single Bolt, Oblong Holes  
On Screen, Filter Not Included,  
Pictured Below



P/N 02-09050013  
13" Air Cleaner Mount Bracket, Replaces  
OE K077-313POL, Pictured Below



P/N 02-0905400  
15" Air Cleaner Mounting Strap, Replaces  
OE K077-315POL, Pictured Below



P/N 29-090550  
7" To 6" 45 Degree Rubber Intake Elbow,  
Pictured Below



P/N 02-0905501  
Stainless Steel Hose Guard, Mounts On  
Back Edge Of Hood & Covers Air Cleaner  
Hose, Sold As A Pair, Pictured Below



## SUN VISORS

P/N 02-0903300  
Stainless Steel Sun Visor, For Curved  
Windshields w/3 Factory Brackets &  
Flat Windshields, Fits 1999-2005, Will Not  
Replace Fiberglass Visor, Pictured Below



**MORE SUN VISORS AVAILABLE, CALL  
FOR MORE INFORMATION!**

## AIR HORNS & RELATED

P/N 09-051327  
25" Chrome Air Horn, Square, Hadley Style

P/N 09-051333  
29" Chrome Air Horn, Square, Hadley  
Style, Pictured Below



## CAB LIGHTS

P/N 09-1608078  
Square Cab Light, Grakon Style,  
Pictured Below



P/N 09-1608079  
Square LED Cab Light, Grakon Style,  
Pictured Below



## MIRRORS & RELATED

P/N 09-0915011  
Stainless Steel Mirror Head,  
Pictured Below



P/N 09-0915007  
Heated Mirror Head

P/N 09-0915008  
Heated/Lighted Mirror Head

P/N 09-0915006  
Heated/Motorized Mirror Head

P/N 09-0915003  
8.5" Spot Mirror, Center Stud,  
Pictured Below



P/N 09-0915004  
8.5" Spot Mirror, Offset Stud

\*\*\* High Quality Aftermarket Replacement Part (Not OEM Parts).

All items represented are aftermarket replacement parts. If you require  
OEM parts, please contact your nearest authorized Kenworth dealer.  
Four State Trucks is not affiliated with Paccar or Kenworth.

Fits KENWORTH W900B/L

www.BestFitTruckParts.com  
855-220-8608

# AFTERMARKET COLLISION PARTS



## E CAB & RELATED (cont.) DOOR ACCESSORIES

P/N 02-0914042 (Left)  
P/N 02-0914043 (Right)  
Stainless Steel Exterior Door Handles,  
Old Style, Replaces OE K294-411PAK,  
K294-411PAKR, Fits 2003 & Older,  
Pictured Below



P/N 29-091402 (Left)  
P/N 29-091403 (Right)  
Exterior Door Handle, New Style,  
Replaces OE R56-1025, R56-1025R,  
Fits 2003 & Newer, Pictured Below



P/N 02-1530044 (Left)  
P/N 02-1530045 (Right)  
Interior Door Handles, Replaces OE  
K294-426PAK, K294-426RPAK,  
Fits 1995-2001, Pictured Below



## F TOOL BOXES

P/N 02-0501003  
40" Complete Battery Box w/Cover & Step,  
Fits 2004 & Older, Pictured Below



P/N 02-0501224  
40" Diamond Plate Aluminum Battery Box  
Cover, Cover Only, Fits 1987-2004

P/N 02-0501101  
40" Aluminum Battery Box & Tool Box  
Upper Step, Fits 2004 & Older,  
Pictured Below



P/N 02-0501301  
40" Aluminum Battery Box & Tool Box  
Lower Step, Fits 2004 & Older

P/N 02-0501002  
45" Aluminum Battery Box w/Diamond  
Plate Cover & Step, Fits 2004 & Older

P/N 02-0501203  
45" Aluminum Diamond Plate Battery Box  
Cover, Fits 2004 & Older

P/N 02-0501102  
45" Aluminum Battery Box Upper Step,  
Fits 2004 & Older

P/N 02-0501300  
45" Aluminum Battery Box Lower Step,  
Fits 2004 & Older

P/N 02-0501207  
45" Aluminum Diamond Plate Battery Box  
Cover, Fits 2005 & Newer

P/N 02-0502203  
45" Aluminum Diamond Plate Battery  
Box Cover w/T Handle Latch & Hinge,  
Fits W900B 1985-2004, Fits W900L  
1990-2004, Pictured Below



P/N 02-0502207  
45" Aluminum Diamond Plate Battery Box  
Cover, Fits 2005-2014, Pictured Below



P/N 02-0501303  
Black Powder Coated Lower Step Brackets,  
Fits 1987-2004, Sold As A Pair,  
Pictured Below



P/N 02-0501304  
Black Powder Coated Lower Step Brackets,  
Fits 2005-2014, Sold As A Pair,  
Pictured Below



P/N 02-0501208  
Poly Washer For Battery Box Lid, 2 Per  
Package w/Steel Insert, Replaces OE  
K366-474

## G FUEL TANKS & RELATED FUEL TANK ACCESSORIES

P/N 09-060101  
2" Wide Rubber Fuel Tank Strap Liner  
w/Lip, Sold By the Foot, Pictured Below



P/N 09-060302  
Safety Vent 1/2" Thread, Fits 1984-2006,  
Pictured Below



P/N 09-060303  
Safety Vent 1/4" Thread, Fits 1984-2006  
Replaces OE 10626GTD, Pictured Below



P/N 02-060306  
Fuel Sender, For 24.5" Dia. Tank, Has OE  
Style Plug, Replaces OE Q21-1024-622,  
Fits 1987-2011, Pictured Below



P/N 02-060307  
Fuel Sender For 22.5" Dia. Fuel Tank,  
Replaces OE Q21-1024-559, 5549-10714-22,  
Pictured Below



P/N 29-060313  
Adjustable Fuel Sender Fits 6"-27" DIA.  
Tanks, 240-33 OHM, Pictured Below



P/N 29-060306  
Anti Siphon Tube Insert, 2.5" I.D. Fill Neck,  
Pictured Below



P/N 29-060304  
Return High Flow Fuel Splitter,  
Pictured Below



## FUEL TANK CAPS

P/N 02-060300  
Non-Locking, Vented Fuel Cap

P/N 02-060301  
Locking, Vented Fuel Cap

\*\*\* High Quality Aftermarket Replacement Part (Not OEM Parts).

All items represented are aftermarket replacement parts. If you require  
OEM parts, please contact your nearest authorized Kenworth dealer.  
Four State Trucks is not affiliated with Paccar or Kenworth.

Fits KENWORTH W900B/L

www.BestFitTruckParts.com  
855-220-8608



# AFTERMARKET COLLISION PARTS



## **G FUEL TANKS & RELATED (cont.) FUEL TANK CAPS**

P/N 29-060310  
DEF Fluid Cap, Replaces OE 908-0223-01,  
Fits 2010 & Newer

## **FUEL TANK STRAPS**

P/N 02-0601001  
2" Aftermarket Stainless Steel Fuel Tank  
Strap, Fits 24.5" Dia. Tanks w/o Steps,  
Has 7/16" Thread On Stem, Use Nut 37373

P/N 02-0601004  
Fuel Tank Support OE Style Lower J  
Bracket For 24.5" Dia. Tanks,  
Pictured Below



## **FUEL TANKS**

P/N 02-060010001K (Left)  
P/N 02-060010002K (Right)  
100 Gallon Aluminum Rear Fill Fuel Tank,  
24.5" x 48", Fits 2008 & Newer,  
Pictured Below



P/N 02-060012001K (Left)  
P/N 02-060012002K (Right)  
120 Gallon Aluminum Rear Fill Fuel Tank,  
24.5" x 60", Center Manifold For Fittings,  
Filler Tube Cut To Length,  
Fits 2008 & Newer, Pictured Below



P/N 02-060015001K (Left)  
P/N 02-060015002K (Right)  
150 Gallon Aluminum Rear Fill Fuel Tank,  
24.5" x 72", Top Fitting Manifold 20" From  
Front Weld To Center Of Manifold, Filler  
Tube Cut To Length, Fits 2008 & Newer,  
Pictured Below



P/N 02-060015003K (Left)  
P/N 02-060015004K (Right)  
150 Gallon Aluminum Rear Fill Fuel Tank,  
24.5" x 72", Top Fitting Manifold 23" From  
Front Weld To Center Of Manifold, Filler  
Tube Cut To Length, Fits 2008 & Newer,  
Pictured Below



**TANKS SOLD INDIVIDUALLY AND AS  
KITS, CALL FOR MORE INFORMATION!**

## **H FENDERS & RELATED**

P/N 09-11050602  
Black Poly Quarter Fenders, Sold As A Pair,  
Pictured Below



P/N 09-110306041  
24" Stainless Steel Quarter Fender w/Tube,  
Mounts To Standard Post, Post Not Included,  
Sold As A Pair, Pictured Below



P/N 09-11030600  
Stainless Steel Quarter Fenders w/Full  
Braces, 22" Height x 25" Wide, 13.5" From  
Bottom To Center Of Mount, Sold As A  
Pair, Pictured Below



## **I MUD FLAPS**

P/N 02-0507005OE  
Rear Hood Tapered Logo Mud Flap,  
13"-18" Taper, 20" Tall, Replaces OE  
MF0001K, OEM Part Not An Aftermarket  
Part, Pictured Below



P/N 02-0507007OE  
Rear Hood Logo Mud Flap, 14" x 16"  
Replaces OE MF-0003K, OEM Part Not An  
Aftermarket Part, Pictured Below



P/N 02-0507004OE  
24" x 6" Logo Mud Flap, Top Of Quarter  
Fender, Replaces OE K1416B, OEM Part  
Not An Aftermarket Part, Pictured Below



P/N 02-0507006OE  
24" x 30" Logo Mud Flap, Replaces OE  
FM3440MF, OEM Part Not An Aftermarket  
Part, Pictured Below



## **J WHEELS & ACCESSORIES**

P/N 09-20132231 (22.5")  
P/N 09-20132431 (24.5")  
Accuride Aluminum Wheel, Steer/Drive,  
Pictured Below



P/N 09-2015221 (22.5", 2 Hand Holes)  
P/N 09-2015242 (24.5", 5 Hand Holes)  
Hub Pilot White Powder-Coated Steel  
Wheel, 10 Hole Wheel, Can Be Used As  
Steer Or Drive Axle Wheel, 70 lbs,  
Fits 1998-2007

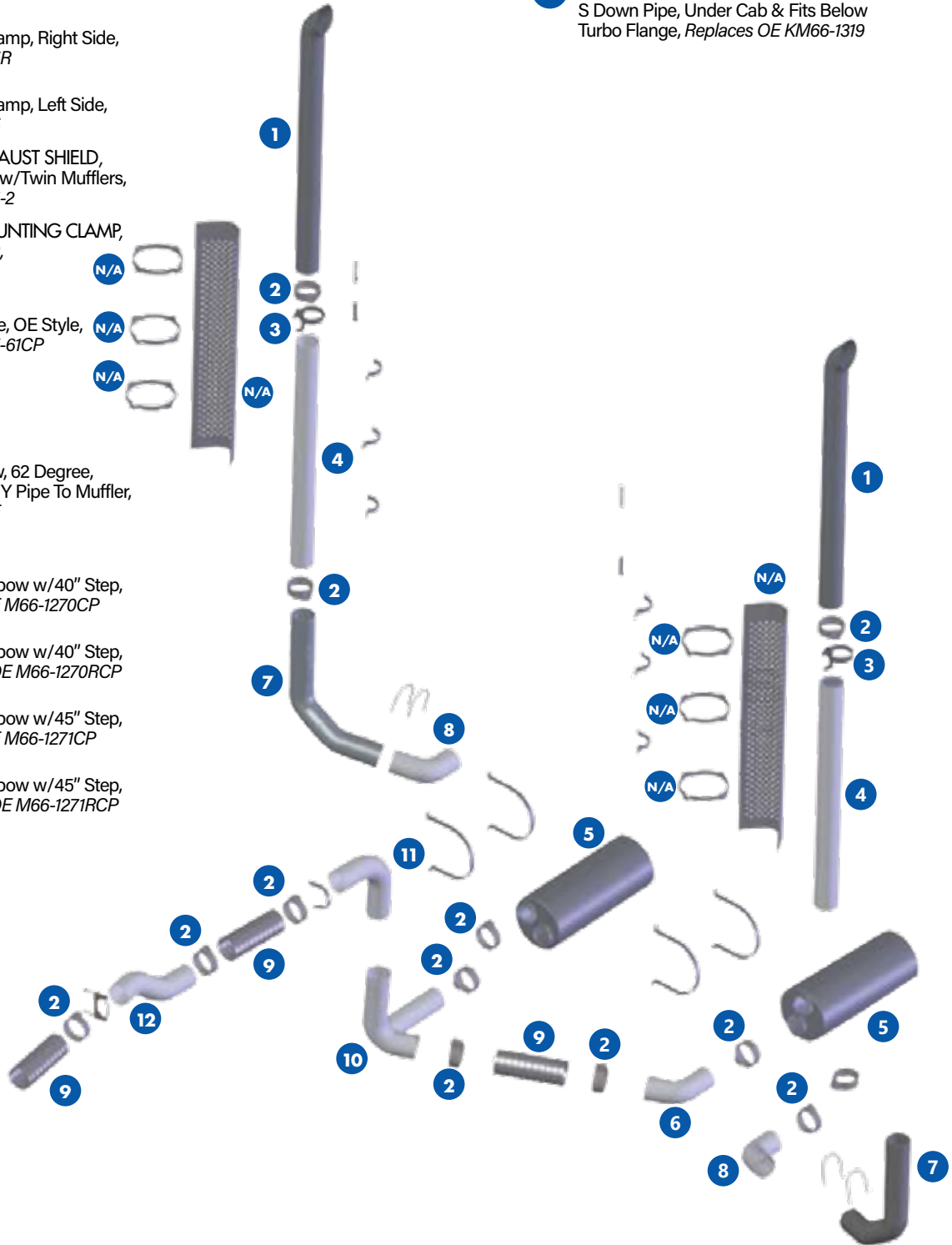
\*\*\* High Quality Aftermarket Replacement Part (Not OEM Parts).

All items represented are aftermarket replacement parts. If you require  
OEM parts, please contact your nearest authorized Kenworth dealer.  
Four State Trucks is not affiliated with Paccar or Kenworth.

# AFTERMARKET COLLISION PARTS

## EXHAUST PARTS FOR KENWORTH W900B/L, 2 MUFFLERS UNDER TRUCK

- 1** P/N 09-08504807  
5" O.D. x 48" Turnout Chrome Top Stack,  
Other Sizes Available
- 2** P/N 09-0800009  
5" Stainless Steel Flat Band Clamp  
P/N 09-0800010  
5" Stainless Steel Preformed Band Clamp
- 3** P/N 02-08410051  
5" Upper Mounting Clamp, Right Side,  
Replaces OE M16-1005R  
P/N 02-08410050  
5" Upper Mounting Clamp, Left Side,  
Replaces OE M16-1005
- N/A** STAINLESS STEEL EXHAUST SHIELD,  
Left Side Of Aero Cab w/Twin Mufflers,  
Replaces OE K213-3811-2
- N/A** EXHAUST SHIELD MOUNTING CLAMP,  
Replaces OE K077-352,  
Fits 2007-2011
- 4** P/N 02-0825061  
5" Chrome Center Pipe, OE Style,  
Replaces OE K180-905-61CP
- 5** P/N 02-080204  
5" x 12" Dia. Muffler,  
Replaces OE M120834
- 6** P/N 02-0810062  
5" Plain Exhaust Elbow, 62 Degree,  
Hooks Flex Pipe From Y Pipe To Muffler,  
Left Side, Replaces OE  
M66-1082N07212-062
- 7** P/N 02-08112700  
5" Chrome Exhaust Elbow w/40" Step,  
Left Side, Replaces OE M66-1270CP  
P/N 02-08112701  
5" Chrome Exhaust Elbow w/40" Step,  
Right Side, Replaces OE M66-1270RCP  
P/N 02-08112711  
5" Chrome Exhaust Elbow w/45" Step,  
Left Side, Replaces OE M66-1271CP  
P/N 02-08112710  
5" Chrome Exhaust Elbow w/45" Step,  
Right Side, Replaces OE M66-1271RCP
- 8** P/N 02-0815090  
5" Plain Muffler Outlet, Elbow  
Connects Stack Elbow To Muffler,  
Replaces OE M66-1082X160225N090
- 9** P/N 09-0804524  
5" x 24" Stainless Steel Flex Pipe
- 10** P/N 02-08061266  
Exhaust Y-Pipe, Replaces OE M66-1266,  
Fits 2003-2007
- 11** P/N 02-08105250  
Exhaust Elbow Above Muffler Inlet,  
Replaces OE K180-18610-525
- 12** P/N 02-0801001  
S Down Pipe, Under Cab & Fits Below  
Turbo Flange, Replaces OE KM66-1319



\*\*\* High Quality Aftermarket Replacement Part (Not OEM Parts).

All items represented are aftermarket replacement parts. If you require OEM parts, please contact your nearest authorized Kenworth dealer. Four State Trucks is not affiliated with Paccar or Kenworth.

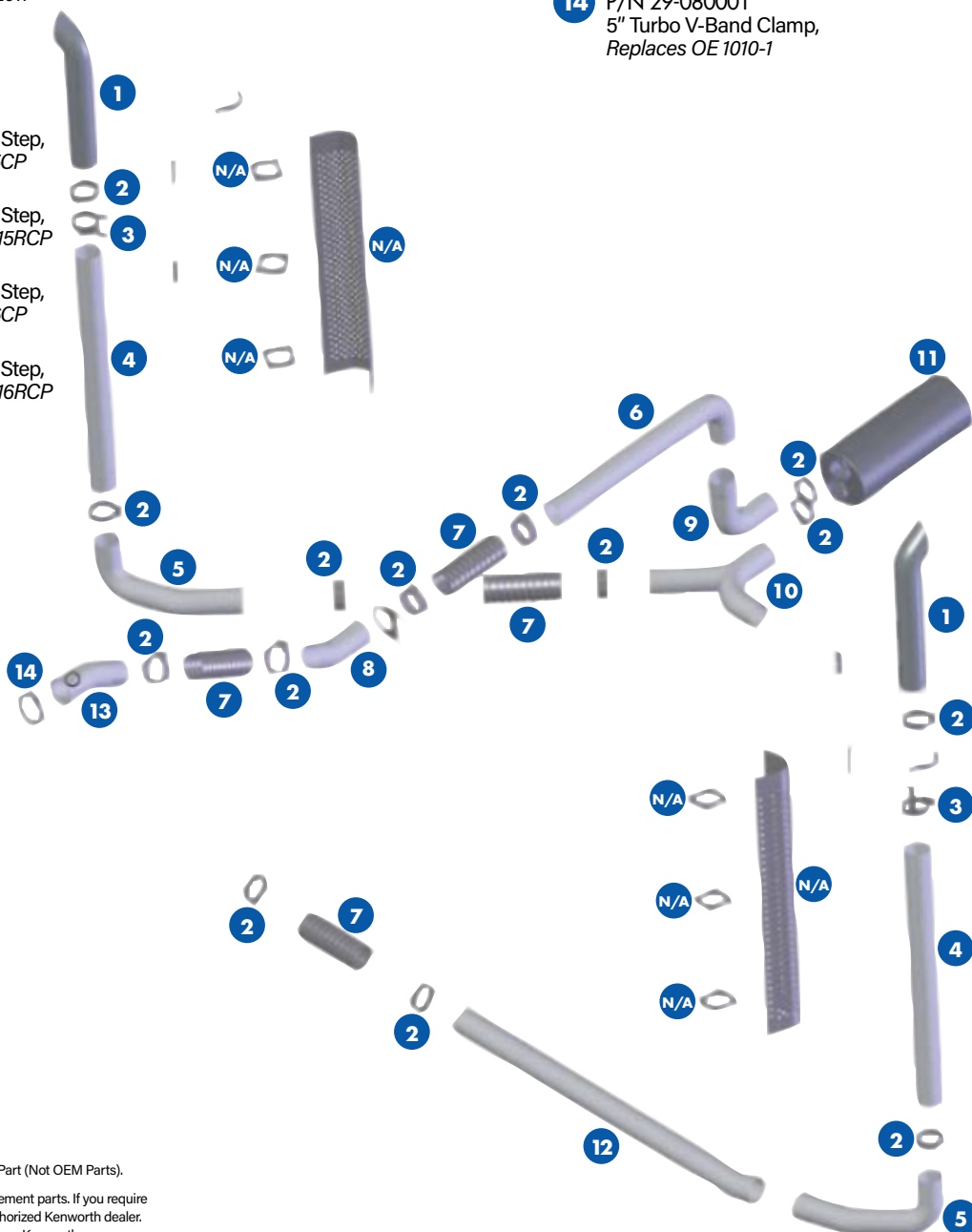
Fits KENWORTH W900B/L

www.BestFitTruckParts.com  
855-220-8608

# AFTERMARKET COLLISION PARTS

## EXHAUST PARTS FOR KENWORTH W900L, AEROCAB EXHAUST, 1 MUFFLER UNDER THE TRUCK

- 1** P/N 09-08504807  
5" O.D. x 48" Turnout Chrome Top Stack, *Other Sizes Available*
- 2** P/N 09-0800009  
5" Stainless Steel Flat Band Clamp  
P/N 09-0800010  
5" Stainless Steel Preformed Band Clamp
- 3** P/N 02-08410051  
5" Upper Mounting Clamp, Right Side, *Replaces OE M16-1005R*  
P/N 02-08410050  
5" Upper Mounting Clamp, Left Side, *Replaces OE M16-1005*
- N/A** EXHAUST SHIELD  
*Replaces OE K213-3811-1*
- N/A** EXHAUST SHIELD MOUNTING CLAMP  
*Replaces OE K077-352, Fits 2007-2011*
- 4** P/N 02-0825061  
5" Chrome Center Pipe, OE Style, *Replaces OE K180-905-61CP*
- 5** P/N 02-08186150  
5" Chrome Exhaust Elbow w/40" Step, Left Side, *Replaces OE K180-18615CP*  
P/N 02-08186151  
5" Chrome Exhaust Elbow w/40" Step, Right Side, *Replaces OE K180-18615RCP*  
P/N 02-08186160  
5" Chrome Exhaust Elbow w/45" Step, Left Side, *Replaces OE K180-18616CP*  
P/N 02-08186161  
5" Chrome Exhaust Elbow w/45" Step, Right Side, *Replaces OE K180-18616RCP*
- 6** P/N 02-08105250  
Exhaust Elbow Above Muffler Inlet, *Replaces OE K180-18610-525*
- 7** P/N 09-0804524  
5" x 24" Stainless Steel Flex Pipe
- 8** P/N 02-08185310  
Exhaust Down Pipe, *Replaces OE K180-18531, Fits 1997-2003*
- 9** P/N 02-08186230  
Exhaust Elbow At Muffler Inlet, *Replaces OE K180-17386-23*  
P/N 02-08186240  
Exhaust Elbow At Muffler Inlet, *Replaces OE K180-17386-24*
- 10** P/N 02-080686130  
Exhaust Y-Pipe, *Replaces OE K180-18613*
- 11** P/N 02-080200  
22" High Flow-Low Back Pressure Muffler, Round Body Instead Of Oval, Mount Bracket Will Have To Be Modified To Replace OE Style Muffler  
P/N 02-080201  
Short Oval Muffler, 10" x 15" x 26", 5" I.D., *Replaces OE MFM12-040-171*  
P/N 29-080204  
Classic Oval Muffler, 10" x 15" x 44", 5" I.D., *Replaces OE MFM12-040-171*
- 12** P/N 02-08186140  
Exhaust Extension Pipe, *Replaces OE K180-18614*
- 13** P/N 02-0801000  
Turbo Pipe, For CAT, *Replaces OE K180-17915*
- 14** P/N 29-080001  
5" Turbo V-Band Clamp, *Replaces OE 1010-1*



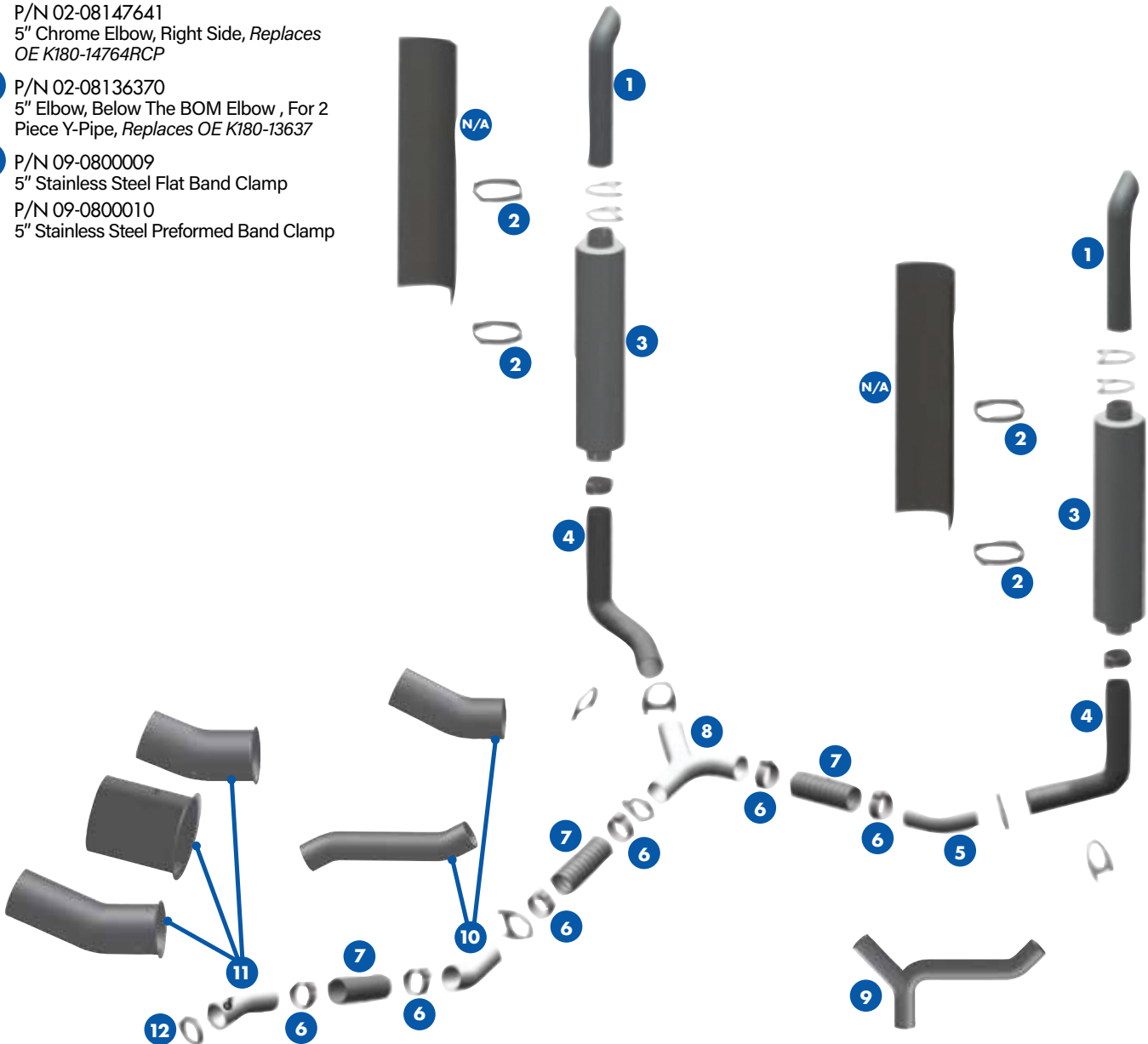
\*\*\* High Quality Aftermarket Replacement Part (Not OEM Parts).

All items represented are aftermarket replacement parts. If you require OEM parts, please contact your nearest authorized Kenworth dealer. Four State Trucks is not affiliated with Paccar or Kenworth.

# AFTERMARKET COLLISION PARTS

## EXHAUST PARTS FOR KENWORTH W900B/L, 2 MUFFLERS ON CAB

- 1** P/N 09-08504807  
5" O.D. x 48" Turnout Chrome Top Stack,  
*Other Sizes Available*
- N/A** EXHAUST SHIELD,  
No Logo, *Replaces OE K213-2901*
- 2** P/N 02-0808008  
Exhaust Shield Mounting Clamp,  
*Replaces OE K077-301-PKG*
- 3** P/N 29-080200  
5" I.D. x 10" Dia. Muffler,  
*Replaces OE 04-21774-001*
- 4** P/N 02-08147640  
5" Chrome Elbow, Left Side, *Replaces OE K180-14764CP*  
P/N 02-08147641  
5" Chrome Elbow, Right Side, *Replaces OE K180-14764RCP*
- 5** P/N 02-08136370  
5" Elbow, Below The BOM Elbow, For 2  
Piece Y-Pipe, *Replaces OE K180-13637*
- 6** P/N 09-0800009  
5" Stainless Steel Flat Band Clamp  
P/N 09-0800010  
5" Stainless Steel Preformed Band Clamp
- 7** P/N 09-0804524  
5" x 24" Stainless Steel Flex Pipe
- 8** P/N 02-08068028  
Exhaust Y-Pipe, For 2 Piece Y-Pipe  
Application, *Replaces OE K180-18028*
- 9** P/N 02-08064766  
1 Piece 5" Exhaust Y-Pipe, *Replaces OE K180-14766, Can Use In Place of (9) 02-08068028, (6) 02-08136370 & (8) 09-080451*
- 10** P/N 02-0801003  
Exhaust Down Pipe, *Replaces OE K180-14122*
- 11** P/N 02-0801004  
5" Turbo Exhaust Flange,  
*Replaces OE K180-15565*  
P/N 02-08010166  
5" Turbo Exhaust Flange,  
*Replaces OE K130-166*  
P/N 02-0801000  
Turbo Pipe, For CAT, *Replaces OE K180-17915*
- 12** P/N 29-080001  
5" Turbo V-Band Clamp,  
*Replaces OE 1010-1*



Fits KENWORTH W900B/L

www.BestFitTruckParts.com  
855-220-8608

\*\*\* High Quality Aftermarket Replacement Part (Not OEM Parts).

All items represented are aftermarket replacement parts. If you require OEM parts, please contact your nearest authorized Kenworth dealer. Four State Trucks is not affiliated with Paccar or Kenworth.



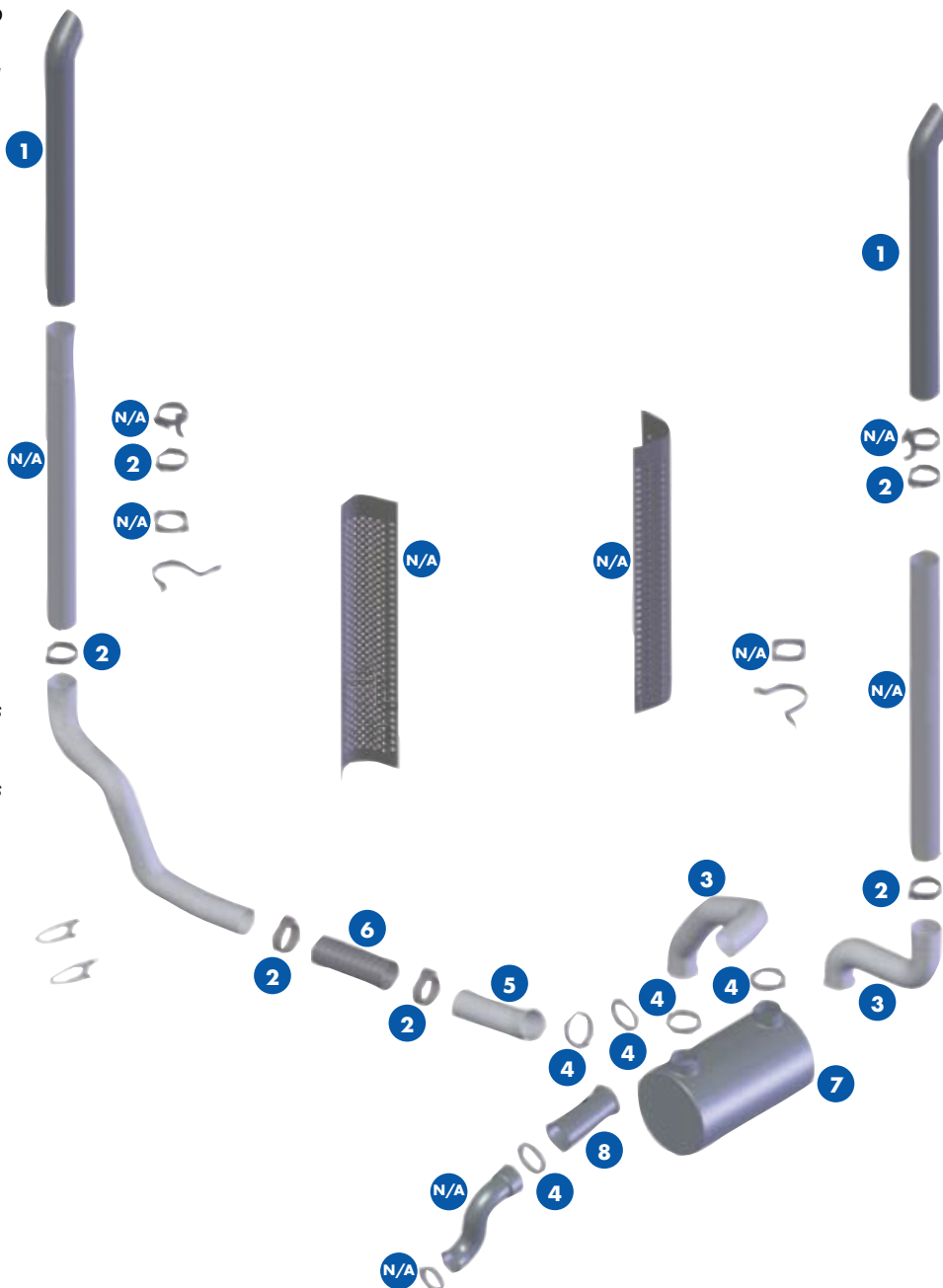
# AFTERMARKET COLLISION PARTS

## EXHAUST PARTS FOR KENWORTH W900B/L, DPF, 2010

- 1** P/N 09-08754808  
7.5" O.D. x 48" Turnout Chrome Top Stack,  
Other Sizes Available
- N/A** 5" I.D. x 61" ALUMINIZED CENTER PIPE,  
Tapered Top, Replaces OE M66-2197-061,  
Fits 2007-2011
- N/A** 5" UPPER STACK MOUNT CLAMP,  
Replaces OE M16-1033-001, Fits 2007-2011
- 2** P/N 09-0800009  
5" Stainless Steel Flat Band Clamp  
P/N 09-0800010  
5" Stainless Steel Preformed Band Clamp
- N/A** EXHAUST SHIELD MOUNTING CLAMP  
Replaces OE K077-305PKG, Fits 2007-2011
- N/A** EXHAUST SHIELD  
Replaces OE M46-1099-002,  
Fits 2007-2011
- 3** P/N 02-08123230  
Flanged Multi Bend Elbow, Replaces OE  
M66-2323, Fits 2007-2011
- 4** P/N 29-080003  
5" V Band Clamp For Flanged Pipes To  
DPF, Replaces OE VQ10588A01,  
Fits 2007-2014
- 5** P/N 02-08123210  
Flanged Elbow, Replaces OE M66-2321,  
Fits 2007-2011
- 6** P/N 09-0804524  
5" x 24" Stainless Steel Flex Pipe
- 7** P/N 29-0809004  
DPF Filter, Fits ISX Cummins 2007-2010,  
Replaces OE 1827739, 1827739PE,  
1827739EX, 28171578, 28171578NX,  
2871578RX  
P/N 29-0809100  
DPF Gasket, Fits ISX Cummins, Replaces  
OE 2871453  
P/N 29-0809101  
DPF Gasket, Fits ISX Cummins, Replaces  
OE 2871452

- 7** P/N 29-0809102  
DPF Gasket, Fits ISX Cummins, Replaces  
OE 2871451  
P/N 29-0809103  
DPF Gasket, Fits DD15 Detroit, Replaces  
OE A6805400017  
P/N 29-0809201  
DPF Filter Clamp, Fits DPF Filters  
29-080901, 29-0809002, 29-0809004,  
29-0809006, 29-0809009, 29-0809010,  
29-0809013, 29-0809016

- 8** P/N 29-080406  
DPF Flex Connector, Replaces OE  
M66-6542-0335, Fits 2008 & Newer
- N/A** TURBO PIPE MULTI BEND  
Replaces OE M66-1816, Fits 2007-2011
- N/A** 4" TURBO V-BAND CLAMP  
Replaces OE VQ10475A01, Fits 2007-2014



\*\*\* High Quality Aftermarket Replacement Part (Not OEM Parts).

All items represented are aftermarket replacement parts. If you require OEM parts, please contact your nearest authorized Kenworth dealer. Four State Trucks is not affiliated with Paccar or Kenworth.

Fits KENWORTH W900B/L

www.BestFitTruckParts.com  
855-220-8608